



District Five Schools of Spartanburg County



Calendar



Directory



Lunch
Menus

Every child

Every day

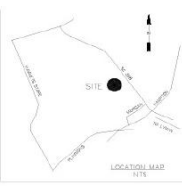
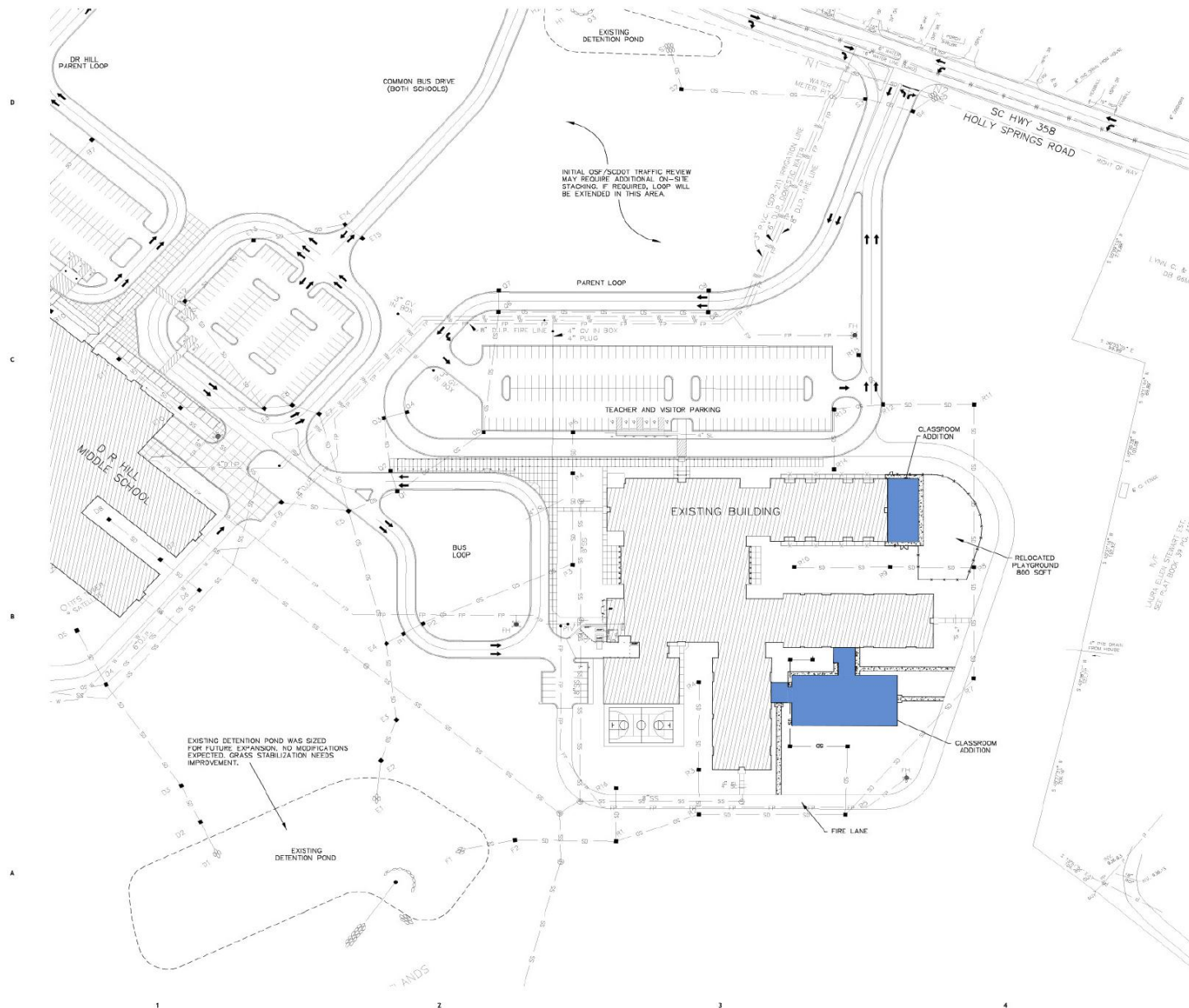


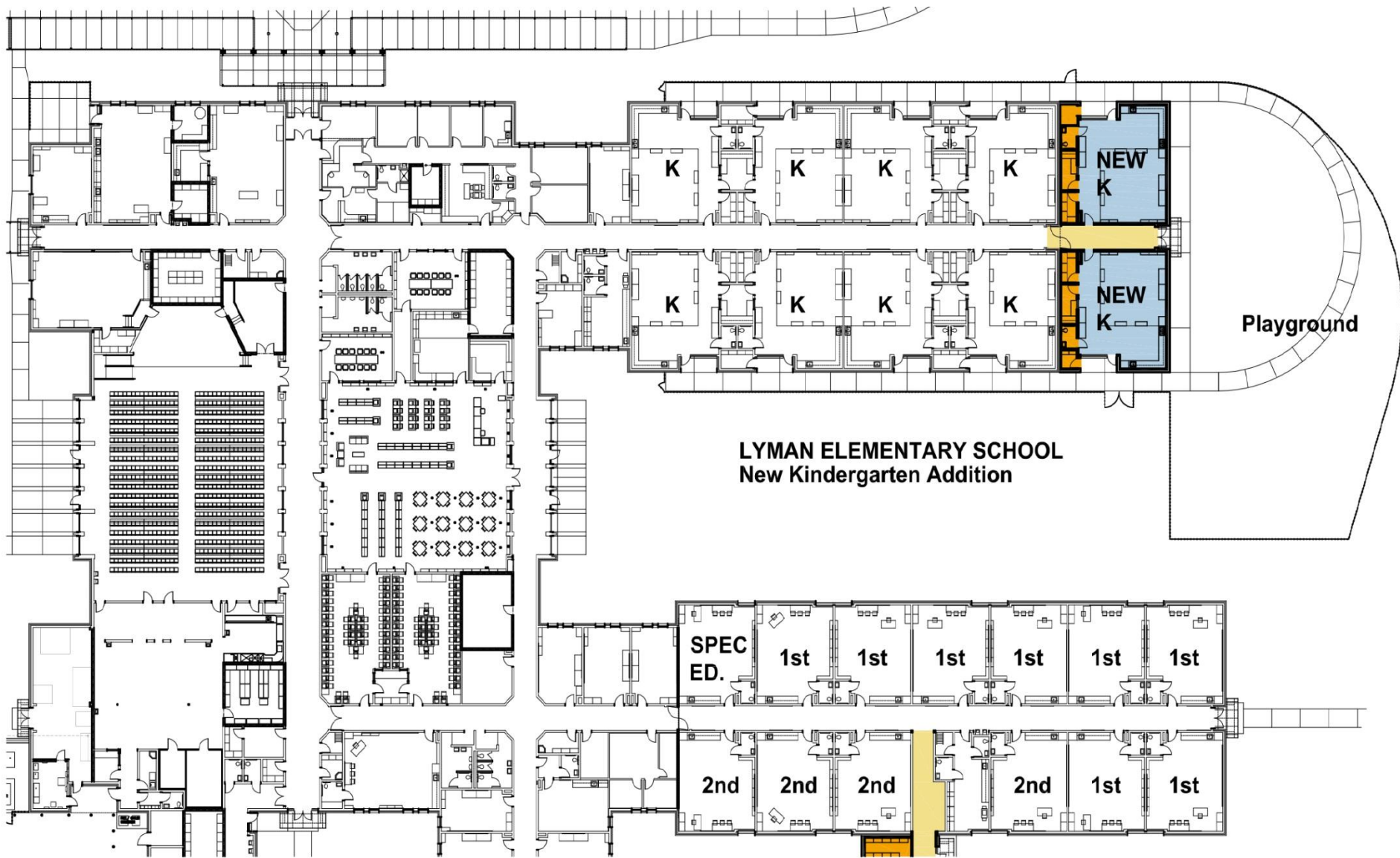
- Regional Leader in K-12 Design
- Published / Award Winning Firm
- Dedicated K-12 Design Studio
- Technical Expertise
- Office of School Facilities



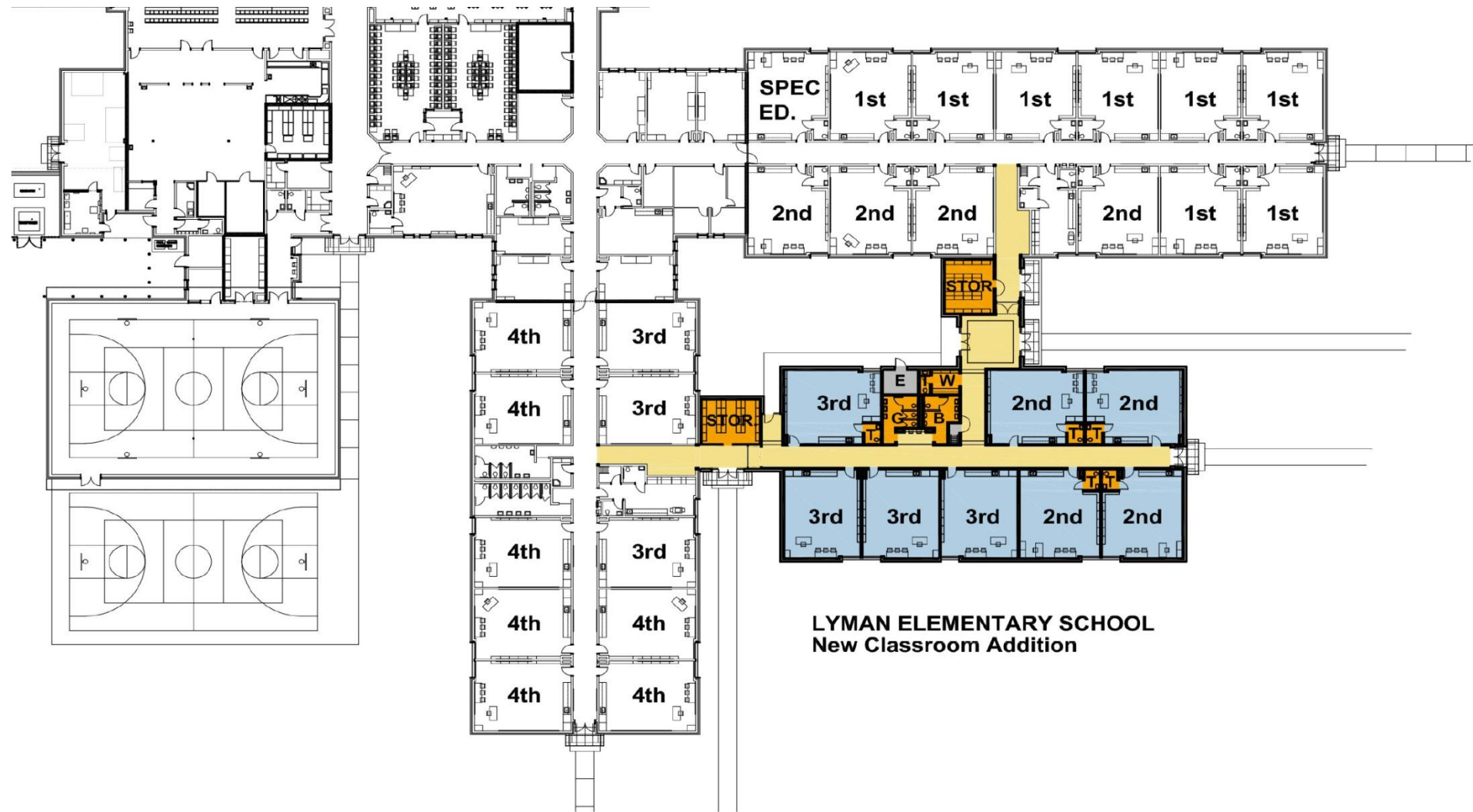
LYMAN ELEMENTARY SCHOOL







LYMAN ELEMENTARY SCHOOL
New Kindergarten Addition



LYMAN ELEMENTARY SCHOOL
New Classroom Addition

Additons to
Lyman Elementary School
Project Summary - October 27, 2014

School Capacity:

Number of Students Per Facility Study Assessment:	741 Students
Projected increase based on Addition - Ten new instructional spaces:	226 Students
Total Capacity:	967 Students

Square Footage:

New Kindergarten Addition - Two new instructional spaces:	3,129 SF
New Classroom Addition - Eight new instructional spaces:	10,629 SF
Total Square Footage:	13,758 SF

Opinion of Probable Cost:

Hard Construction Cost:	13,758 SF X \$175/SF = \$2,407,650
Contingent (10%):	240,765
Subtotal:	\$2,648,415
Soft Costs (Fees, Furniture, etc...)	approx..\$ 300,000
Total Project Costs:	\$2,948,415

Additons to
Lyman Elementary School
Project Summary - October 27, 2014

Tenative Project Schedule:

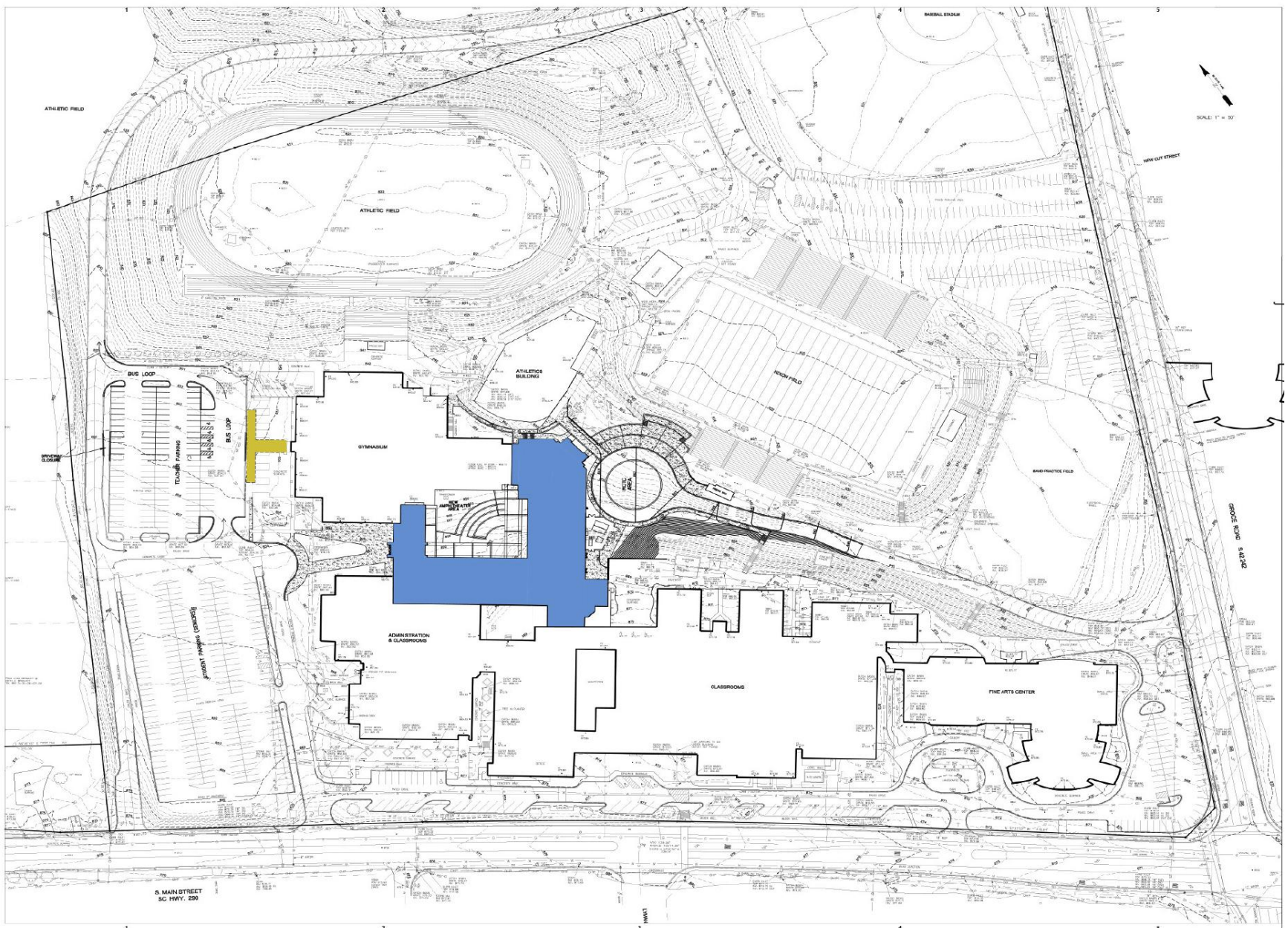
School Board Approval for Design:	November 20, 2014
Submit DD's to OSF:	November 25, 2014
Submit CD's to OSF:	January 30, 2014
Finalize for Bids:	month of February, 2015
Advertisement for Bids:	March 8, 2015
Bids Received:	April 7, 2015
Protest Period Ends:	April 17, 2015
Construction Project Awarded to Contractor by School Board:	April 20, 2015
Shop Drawings/Mobilization:	April/May 2015
Construction Begins Onsite:	June 1, 2015
Obrain Substantial Completion:	Spring 2016
Owner Move In:	Summer 2016
Ready For School:	August 2016

BYRNES HIGH SCHOOL

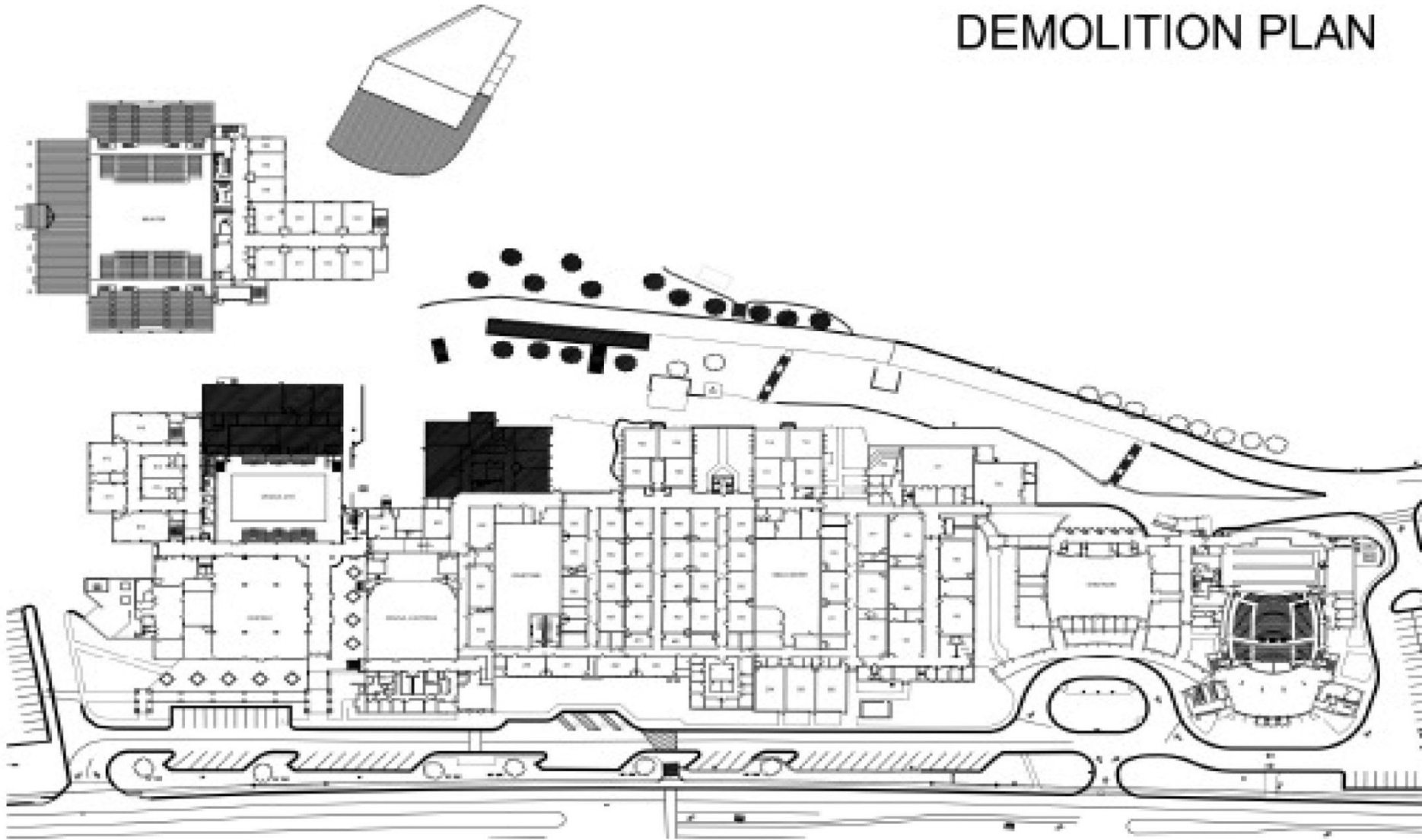




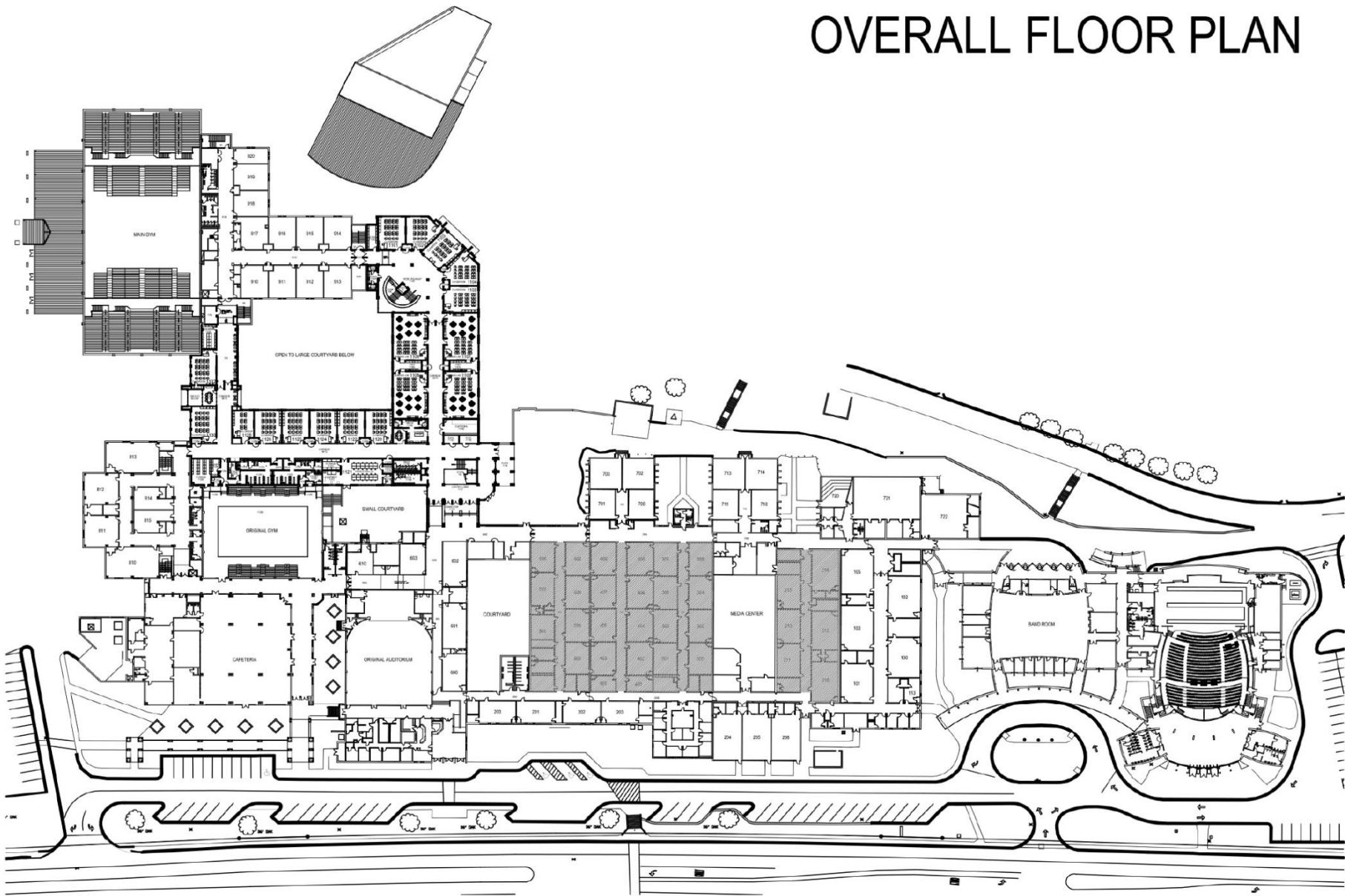
conceptual site plan



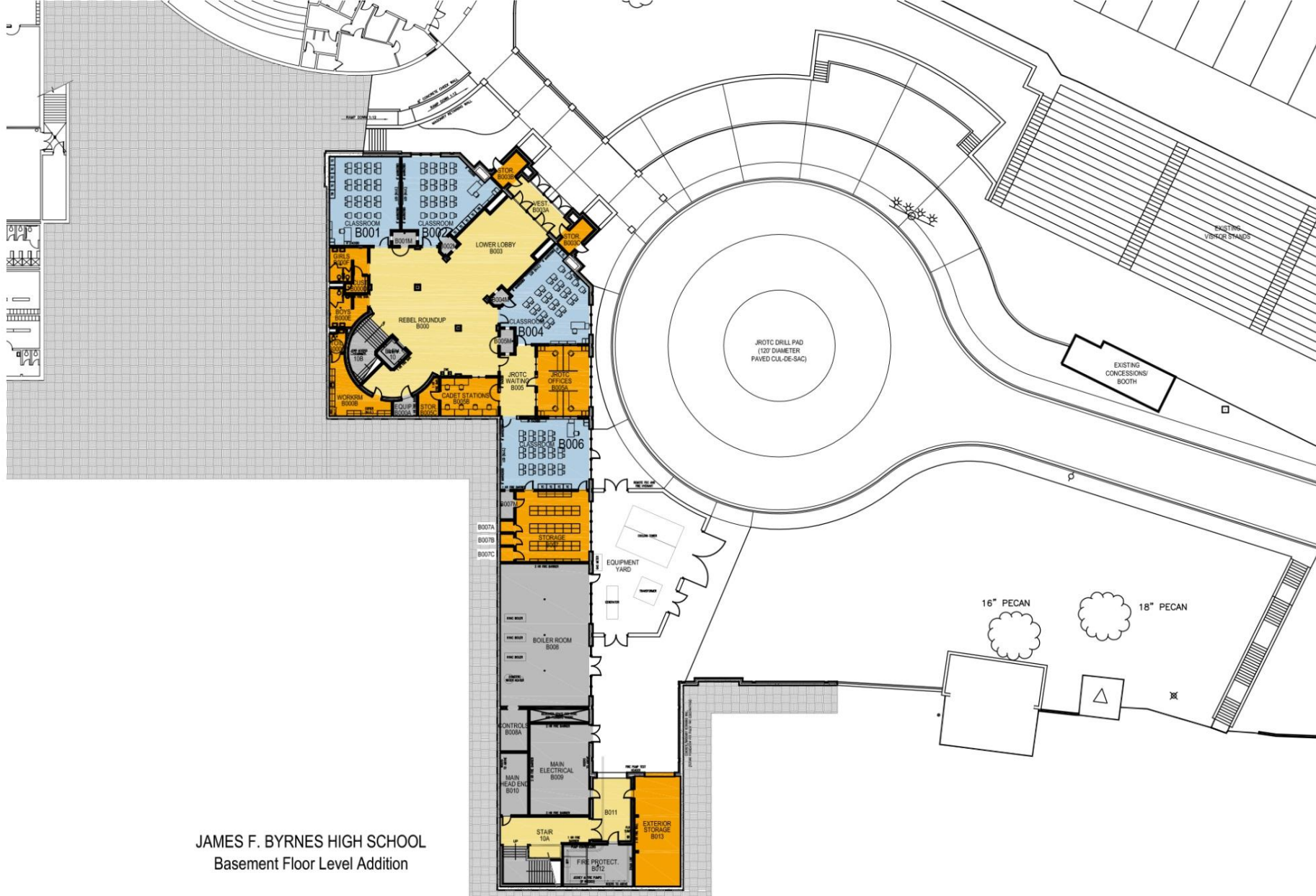
DEMOLITION PLAN



OVERALL FLOOR PLAN







JAMES F. BYRNES HIGH SCHOOL
Basement Floor Level Addition

Classroom Addition to James F. Byrnes High School

Project Summary - October 27, 2014

School Capacity:

Current Capacity at 100%: approx. 2646

Number of Students Per Facility Study Assessment at 75%: approx. 1985

Number of New Classrooms: 35 (less 7 demo) = 28 @ 25 each = $700 \times .75 = 525$

Number of New Labs: 7 @ 25 each = $175 \times .75 = 131$

Number of New Small Group/Resource: 2 @ 12 each = $24 \times .75 = 18$

Total increase in capacity at 75% room utilization: 674 students

Total available capacity following Classroom addition: *2,659 Students

Based on the existing condition of the current classrooms on Halls 210, 300, 400, and 500, we recommend that those rooms no longer be used as instructional spaces once the new classroom wing is available. Without future replacement or significant renovation to those Halls, the net capacity would be reduced by 26 classrooms, 2 resource rooms, and 3 labs. Therefore the total capacity of 2,659 would be reduced by 562 to reflect a capacity of **2,097 (net gain of 112 students following completion of Phase one).*

Square Footage:

New Main Level Addition: 42,345 SF

New Ground Level Addition: 40,244 SF

New Basement Level Addition: 14,362 SF

Total square footage of addition: 96,951 SF

Opinion of Probable cost:

Hard Construction Cost: $96,951 \text{ SF} \times \$175/\text{SF} = \$16,966,425$

Contingency (10%): 1,696,642

Subtotal: \$18,663,067

Soft Costs (Fees, Furniture, etc...)	approx..\$2,000,000
Total project costs:	approx. \$20,663,067

Tentative Project Schedule:

School Board Approval for Design:	November 20, 2014
Submit DD's to OSF:	November 25, 2014
Submit CD's to OSF:	January 30, 2014
Finalize for Bids:	month of February, 2015
Advertisement for Bids:	March 8, 2015
Bids received:	April 7, 2015
Protest period ends:	April 17, 2015
Construction Project awarded to Contractor by School Board:	April 20, 2015
Shop Drawings/mobilization:	April/May 2015
Construction begins onsite:	June 1, 2015
Obtain Substantial Completion:	June 1, 2016
Owner move-in:	July 2016
Ready for School:	August 2016