



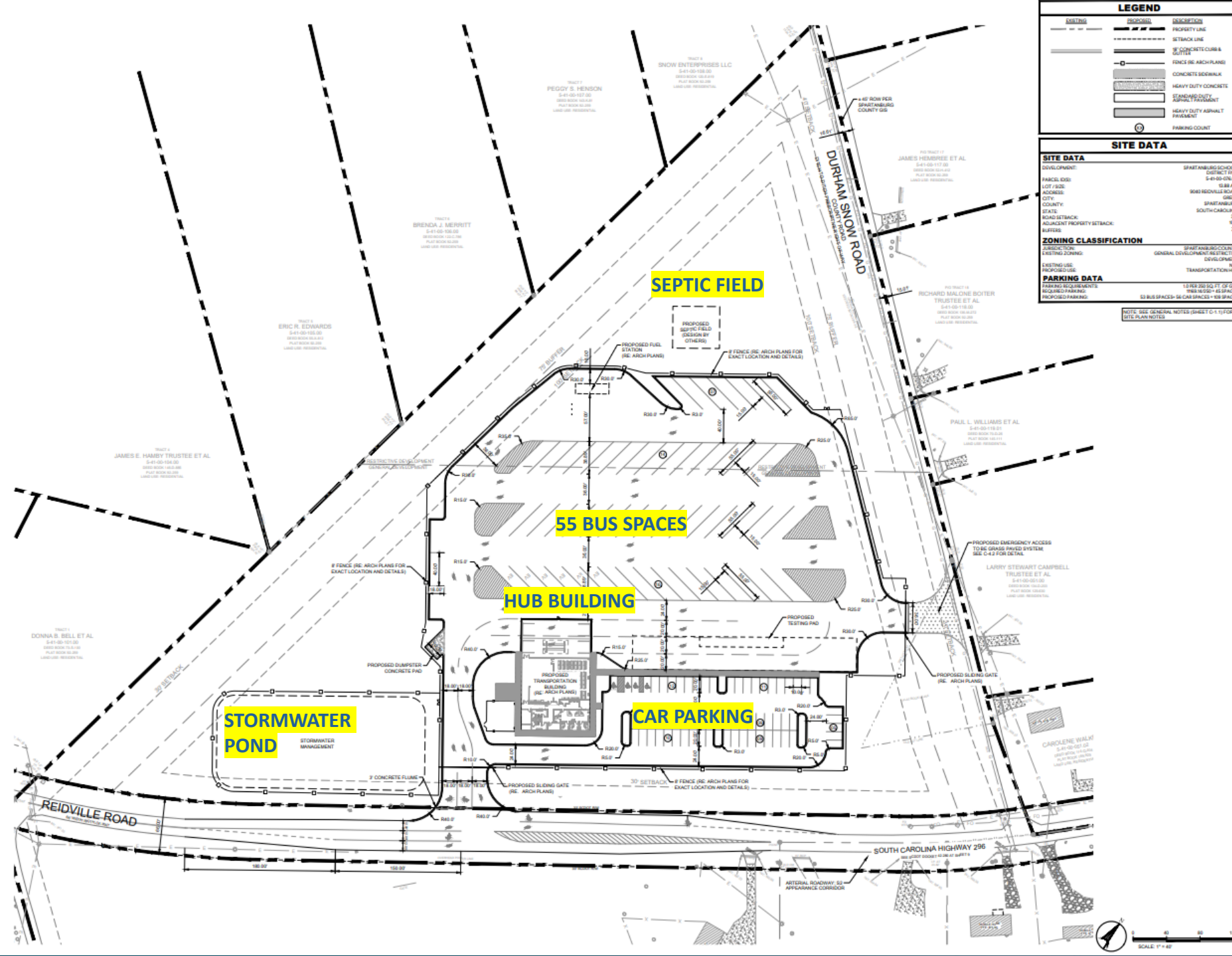
# South Transportation Hub – GMP #2



**Spartanburg District Five**  
EVERY CHILD. EVERY DAY.

**ThompsonTurner**  
Construction

**GMC**

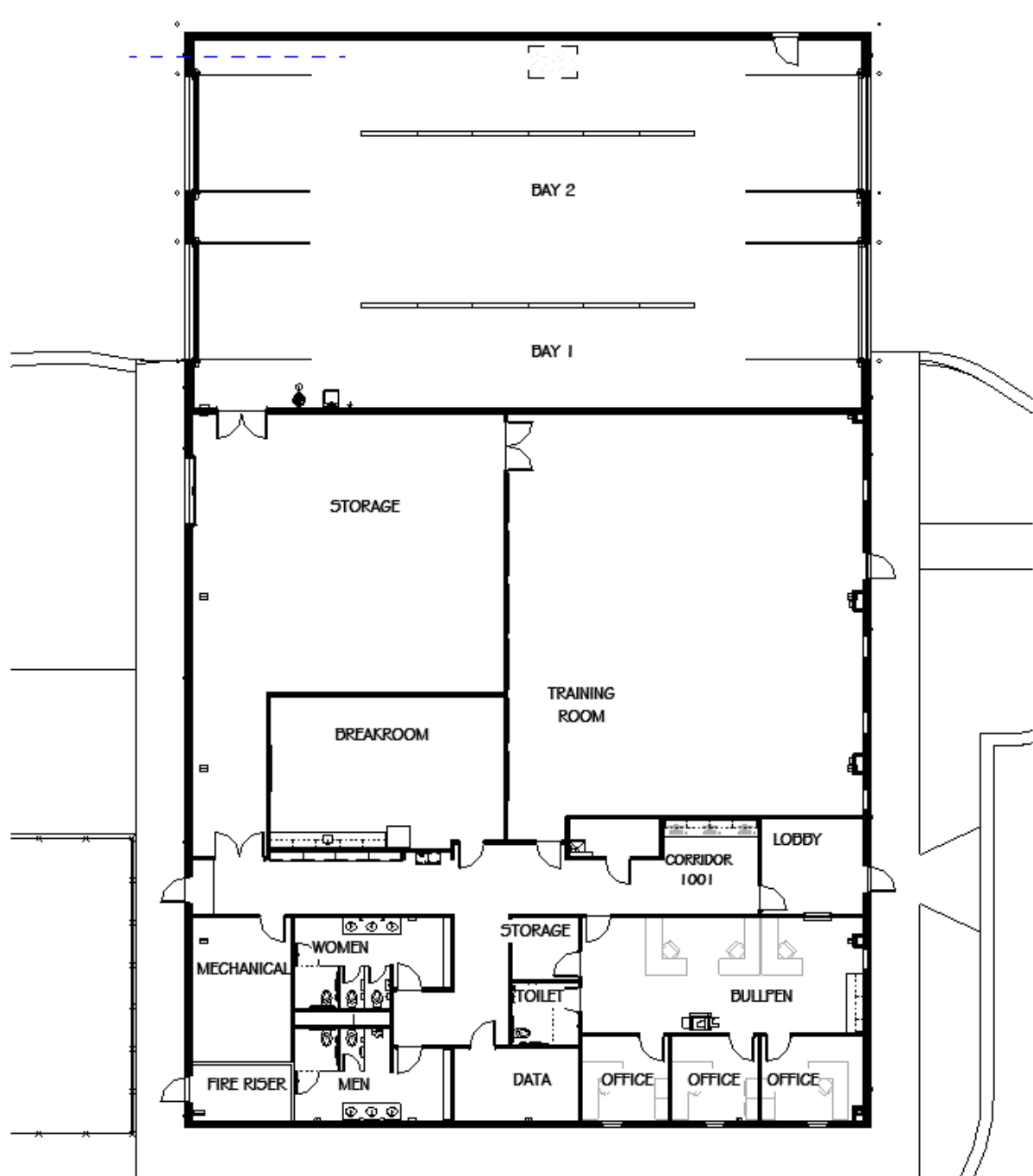


SYMBOL	DESCRIPTION
---	PROPERTY LINE
- - - - -	SETBACK LINE
▬▬▬▬▬	CONCRETE CURB & GUTTER
▬▬▬▬▬	FENCE (SEE ARCH PLANS)
▬▬▬▬▬	CONCRETE SIDEWALK
▬▬▬▬▬	HEAVY DUTY CONCRETE
▬▬▬▬▬	STANDARD DUTY ASPHALT PAVEMENT
▬▬▬▬▬	HEAVY DUTY ASPHALT PAVEMENT
○	PARKING COURT

SITE DATA	
<b>DEVELOPMENT:</b> SPARTANBURG SCHOOLS DISTRICT FIVE	
<b>PARCEL ID#:</b> 9-49-00-0000	
<b>LOT / SIZE:</b> 5.88 AC	
<b>ADDRESS:</b> 9000 REIDVILLE ROAD	
<b>CITY:</b> GSCG	
<b>COUNTY:</b> SPARTANBURG	
<b>STATE:</b> SOUTH CAROLINA	
<b>ROAD SETBACK:</b> 30'	
<b>ADJACENT PROPERTY SETBACK:</b> 80'	
<b>ALFAGES:</b> 70'	
<b>ZONING CLASSIFICATION:</b> SPARTANBURG COUNTY GENERAL DEVELOPMENT SUBDISTRICT DEVELOPMENT	
<b>EXISTING USE:</b> TRANSPORTATION-HUB	
<b>PROPOSED USE:</b> TRANSPORTATION-HUB	
<b>PARKING DATA:</b> 18 PER 250 SQ FT OF GFA	
<b>EXISTING PARKING:</b> 1984 14,552' ± 45 SPACES	
<b>PROPOSED PARKING:</b> 53 BUS SPACES- 56 CAR SPACES + 68 SPACES	

NOTE: SEE GENERAL NOTES (SHEET D-1) FOR SITE PLAN NOTES.



# South Transportation Hub – GMP #2

Scope – SCDOT road widening on Reidville Rd, Transportation Hub Building, Landscaping, Irrigation, and Fencing

## GUARANTEED MAXIMUM PRICE (GMP2) PRESENTATION TO THE BOARD OF TRUSTEES

SCDOT Roadwork road widening	\$437,528
Landscaping/Irrigation/Fencing	\$272,604
Building	\$2,772,839
Contingency at 5%	\$200,696
<b>Total GMP 1 (approved)</b>	<b>\$3,208,972</b>
<b>Total GMP 2</b>	<b>\$3,673,667</b>
<b>PROJECT TOTAL</b>	<b>\$6,882,639</b>





**Spartanburg District Five**  
EVERY CHILD. EVERY DAY.

**ThompsonTurner**  
Construction

**GMC**