

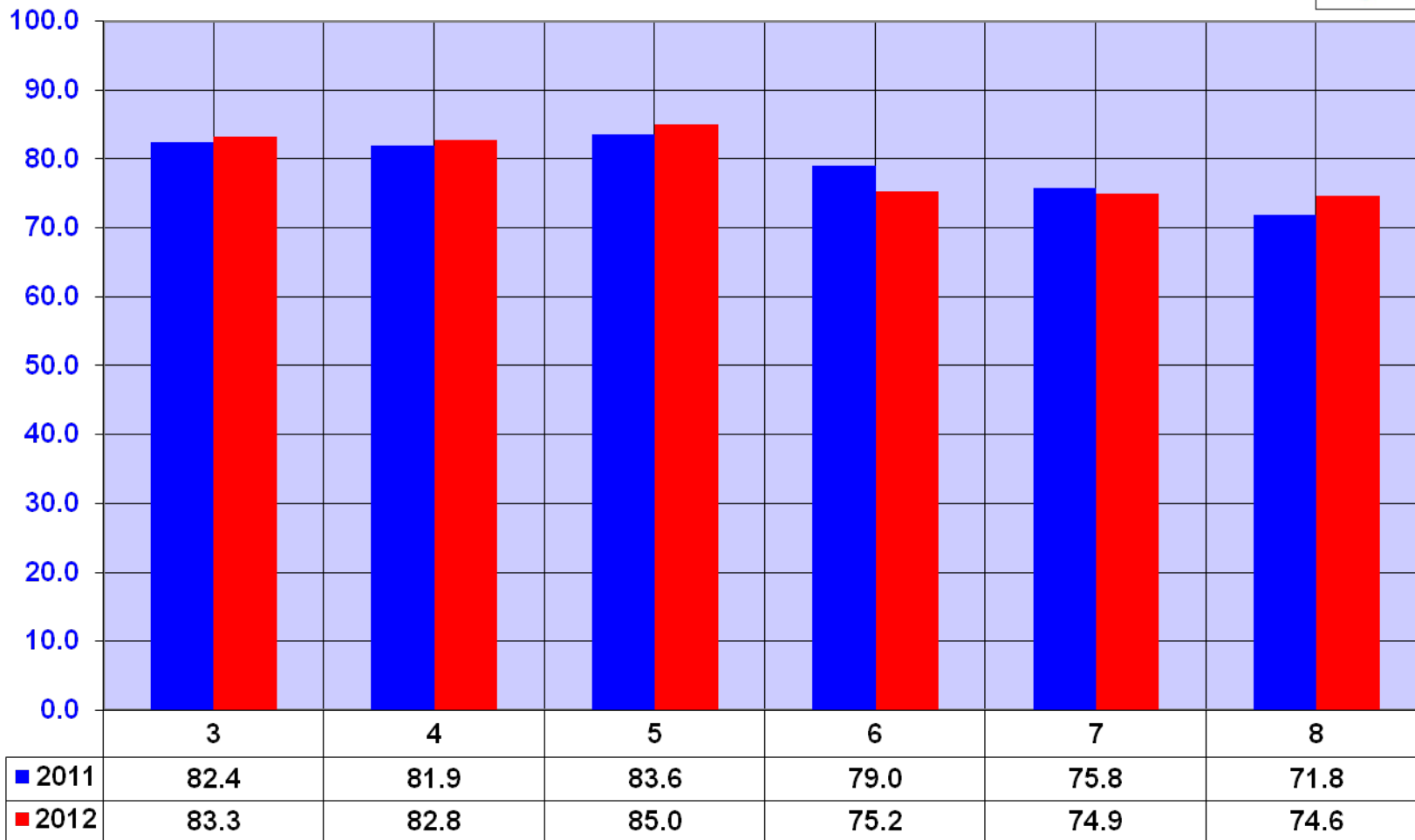
DISTRICT
Five
SCHOOLS

Spartanburg County

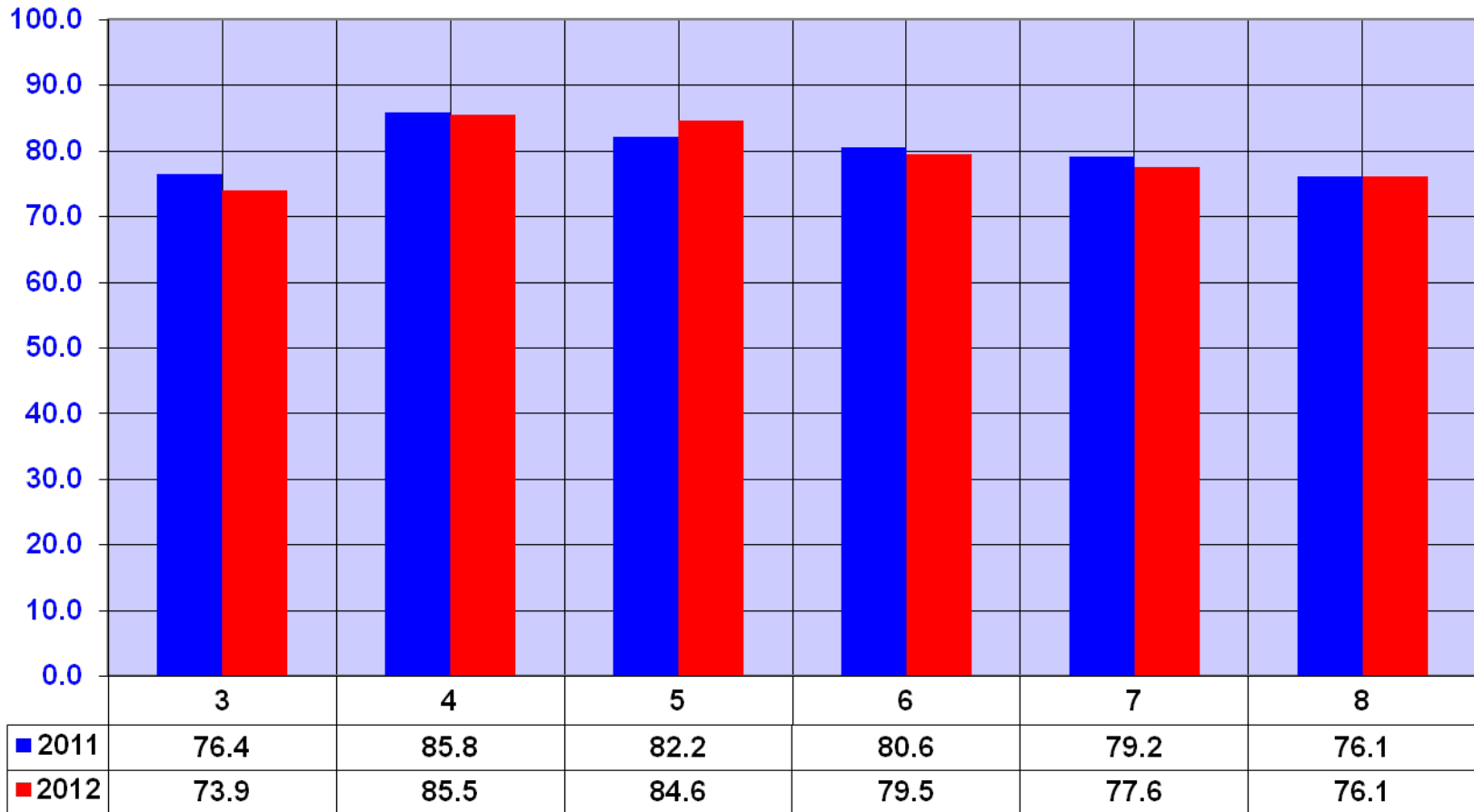
Every child...every day

PASS Results: 2011-2012

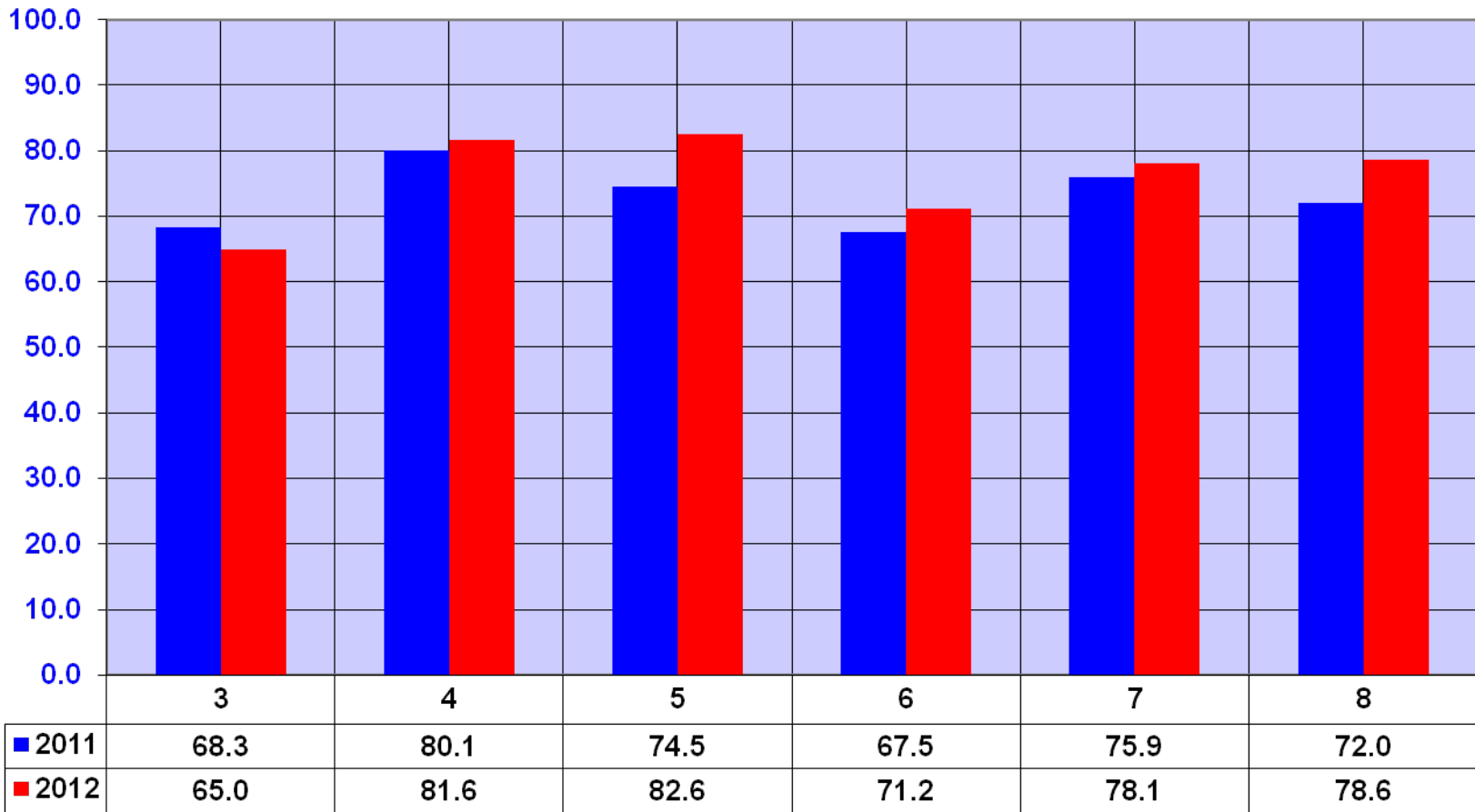
PASS: Percent Meeting Standard English Language Arts (Reading and Research)



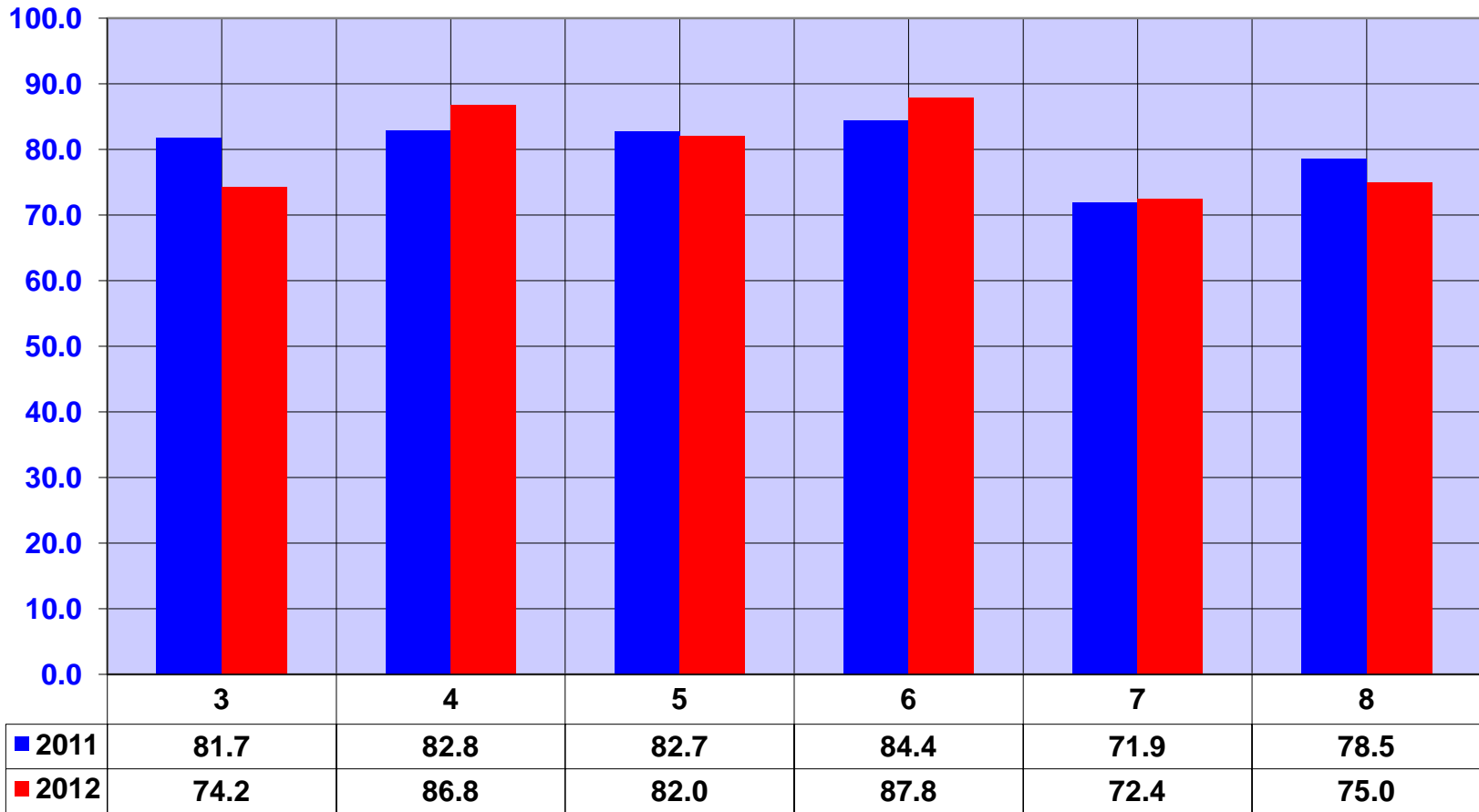
PASS: Percent Meeting Standard Mathematics



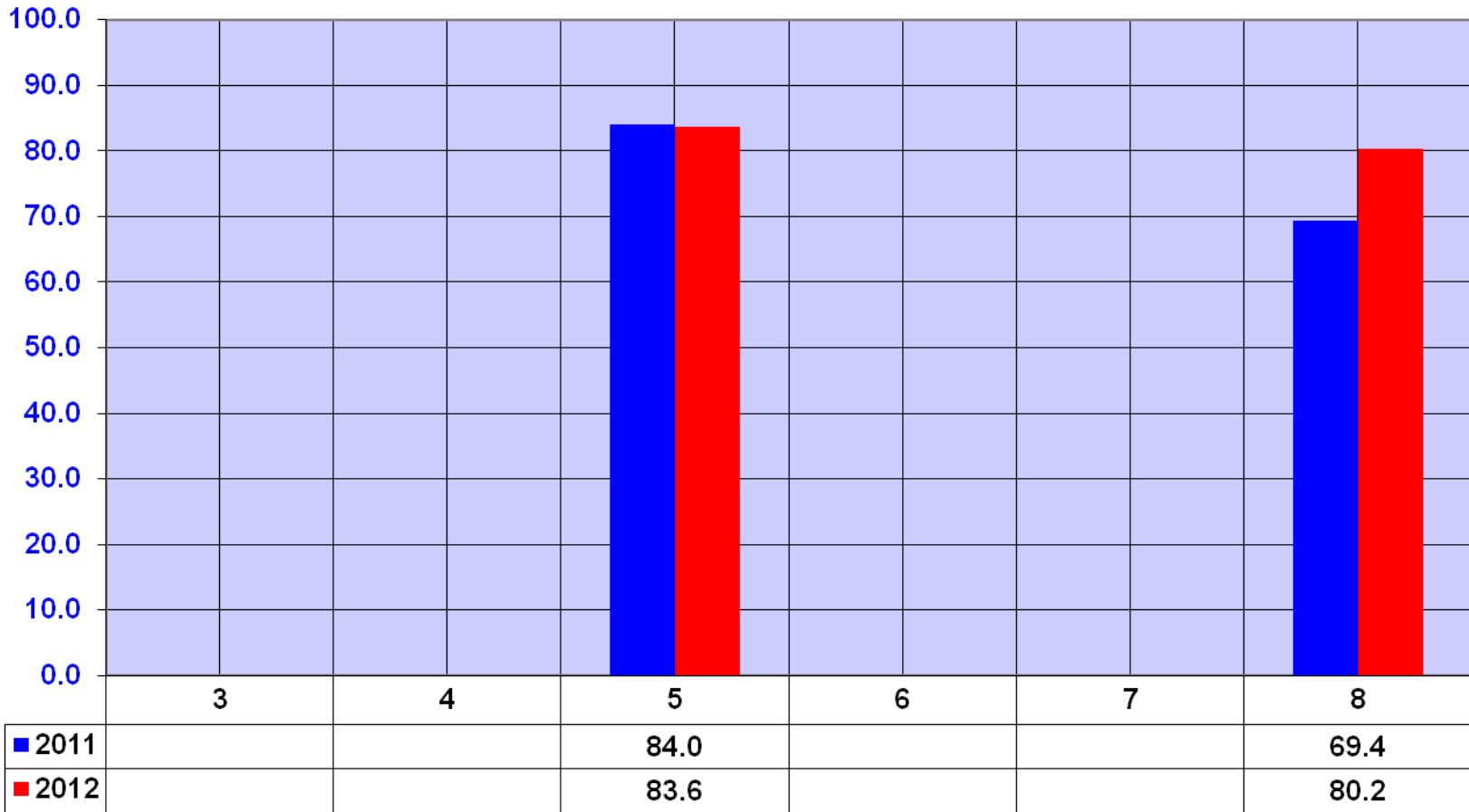
PASS: Percent Meeting Standard Science



PASS: Percent Meeting Standard Social Studies



PASS: Percent Meeting Standard Writing



District Five Schools of Spartanburg County

PASS: Percent Meeting Standard

ELA (Reading and Research)			
<i>Grade</i>	<i>2010</i>	<i>2011</i>	<i>2012</i>
3	82.6	82.4	83.3
4	80.9	81.9	82.8
5	81.2	83.6	85.0
6	82.8	79.0	75.2
7	76.2	75.8	74.9
8	67.5	71.8	74.6

Mathematics			
<i>Grade</i>	<i>2010</i>	<i>2011</i>	<i>2012</i>
3	75.5	76.4	73.9
4	83.4	85.8	85.5
5	78.7	82.2	84.6
6	77.8	80.6	79.5
7	76.6	79.2	77.6
8	68.2	76.1	76.1

Science			
<i>Grade</i>	<i>2010</i>	<i>2011</i>	<i>2012</i>
3	62.5	68.3	65.0
4	77.5	80.1	81.6
5	77.7	74.5	82.6
6	68.1	67.5	71.2
7	77.4	75.9	78.1
8	70.6	72.0	78.6

Social Studies			
<i>Grade</i>	<i>2010</i>	<i>2011</i>	<i>2012</i>
3	79.6	81.7	74.2
4	80.2	82.8	86.8
5	71.9	82.7	82.0
6	87.3	84.4	87.8
7	68.2	71.9	72.4
8	69.7	78.5	75.0

Writing			
<i>Grade</i>	<i>2010</i>	<i>2011</i>	<i>2012</i>
3	76.4		
4	77.3		
5	77.8	84.0	83.6
6	79.7		
7	71.9		
8	72.9	69.4	80.2

ELA - English Language Arts

Data Source - SCDOE Website

District Five Schools of Spartanburg County

PASS Percent Exemplary

ELA (Reading and Research)			
<i>Grade</i>	<i>2010</i>	<i>2011</i>	<i>2012</i>
3	60.0	62.4	63.1
4	39.9	46.9	49.2
5	40.6	38.5	46.5
6	46.4	44.2	45.4
7	41.4	46.4	45.2
8	35.6	42.2	43.3

Mathematics			
<i>Grade</i>	<i>2010</i>	<i>2011</i>	<i>2012</i>
3	47.7	51.0	44.0
4	41.8	51.1	51.2
5	44.1	42.6	44.8
6	42.9	44.4	37.5
7	44.8	46.2	43.9
8	29.4	39.2	38.4

Science			
<i>Grade</i>	<i>2010</i>	<i>2011</i>	<i>2012</i>
3	33.6	28.2	24.5
4	18.9	24.7	17.6
5	31.9	25.2	33.3
6	19.9	12.5	13.9
7	31.4	30.0	35.2
8	31.4	41.1	44.1

Social Studies			
<i>Grade</i>	<i>2010</i>	<i>2011</i>	<i>2012</i>
3	33.3	42.6	37.1
4	28.3	34.5	35.5
5	27.0	42.7	43.9
6	35.7	44.7	46.2
7	33.7	44.8	35.4
8	34.9	48.7	52.1

Writing			
<i>Grade</i>	<i>2010</i>	<i>2011</i>	<i>2012</i>
3	46.6		
4	39.5		
5	42.5	43.8	48.7
6	41.7		
7	28.8		
8	30.2	29.2	44.2

ELA - English Language Arts

Data Source - SCDOE Website

District Five Schools of Spartanburg County

PASS 2012: Percent Meeting Standard

ELA (Reading and Research)

School	3	4	5	6	7	8
Abner Creek	90.9	80.7				
Duncan	78.6	78.5				
Lyman	82.8	88.8				
Reidville	85.2	82.1				
River Ridge	81.3	82.9				
Wellford	83.6	82.0				
Beech Springs			81.7	71.5		
Berry Shoals			88.6	79.1		
D.R. Hill					72.4	72.8
Florence Chapel					77.4	76.2

PASS 2012: Percent Exemplary

ELA (Reading and Research)

School	3	4	5	6	7	8
Abner Creek	71.4	57.8				
Duncan	54.4	38.0				
Lyman	67.2	56.0				
Reidville	66.7	58.9				
River Ridge	59.7	45.2				
Wellford	64.7	45.9				
Beech Springs			40.1	41.3		
Berry Shoals			53.4	49.7		
D.R. Hill					40.9	43.5
Florence Chapel					49.7	43.2

Data Source - SCDOE Website

District Five Schools of Spartanburg County

PASS 2012: Percent Meeting Standard

Mathematics

<i>School</i>	3	4	5	6	7	8
Abner Creek	84.4	90.4				
Duncan	51.9	81.8				
Lyman	77.6	88.8				
Reidville	81.5	91.1				
River Ridge	74.1	80.1				
Wellford	86.3	86.9				
Beech Springs			79.6	74.4		
Berry Shoals			90.2	85.0		
D.R. Hill					76.4	79.5
Florence Chapel					78.8	72.9

PASS 2012: Percent Exemplary

Mathematics

<i>School</i>	3	4	5	6	7	8
Abner Creek	55.8	60.2				
Duncan	26.0	37.2				
Lyman	46.6	56.0				
Reidville	46.3	66.1				
River Ridge	44.6	50.7				
Wellford	52.9	44.3				
Beech Springs			37.7	27.9		
Berry Shoals			52.7	47.8		
D.R. Hill					44.9	43.8
Florence Chapel					43.0	33.3

Data Source - SCDOE Website

District Five Schools of Spartanburg County

PASS 2012: Percent Meeting Standard

Science

School	3	4	5	6	7	8
Abner Creek	74.4	91.6				
Duncan	49.1	71.9				
Lyman	70.2	84.0				
Reidville	66.7	73.2				
River Ridge	70.4	80.8				
Wellford	55.6	91.8				
Beech Springs			78.3	67.3		
Berry Shoals			87.2	75.5		
D.R. Hill					76.7	83.1
Florence Chapel					79.5	74.5

PASS 2012: Percent Exemplary

Science

School	3	4	5	6	7	8
Abner Creek	28.2	34.9				
Duncan	18.9	4.1				
Lyman	22.8	15.2				
Reidville	33.3	8.9				
River Ridge	23.9	21.9				
Wellford	25.9	23.0				
Beech Springs			30.8	11.9		
Berry Shoals			36.1	16.1		
D.R. Hill					36.2	48.6
Florence Chapel					34.1	39.9

Data Source - SCDOE Website

District Five Schools of Spartanburg County

PASS 2012: Percent Meeting Standard

Social Studies

School	3	4	5	6	7	8
Abner Creek	89.5	91.6				
Duncan	62.7	80.2				
Lyman	78.0	88.8				
Reidville	74.1	87.5				
River Ridge	69.1	85.6				
Wellford	79.2	91.8				
Beech Springs			76.0	83.7		
Berry Shoals			88.6	92.0		
D.R. Hill					70.1	71.1
Florence Chapel					74.7	78.7

PASS 2012: Percent Exemplary

Social Studies

School	3	4	5	6	7	8
Abner Creek	65.8	34.9				
Duncan	19.6	24.0				
Lyman	40.7	40.8				
Reidville	18.5	33.9				
River Ridge	35.3	43.2				
Wellford	45.8	31.1				
Beech Springs			35.6	30.1		
Berry Shoals			53.0	62.7		
D.R. Hill					32.9	42.3
Florence Chapel					37.9	61.3

Data Source - SCDOE Website

District Five Schools of Spartanburg County

PASS 2012: Percent Meeting Standard

Writing

School	3	4	5	6	7	8
Abner Creek						
Duncan						
Lyman						
Reidville						
River Ridge						
Wellford						
Beech Springs			78.2			
Berry Shoals			89.5			
D.R. Hill						78.3
Florence Chapel						82.0

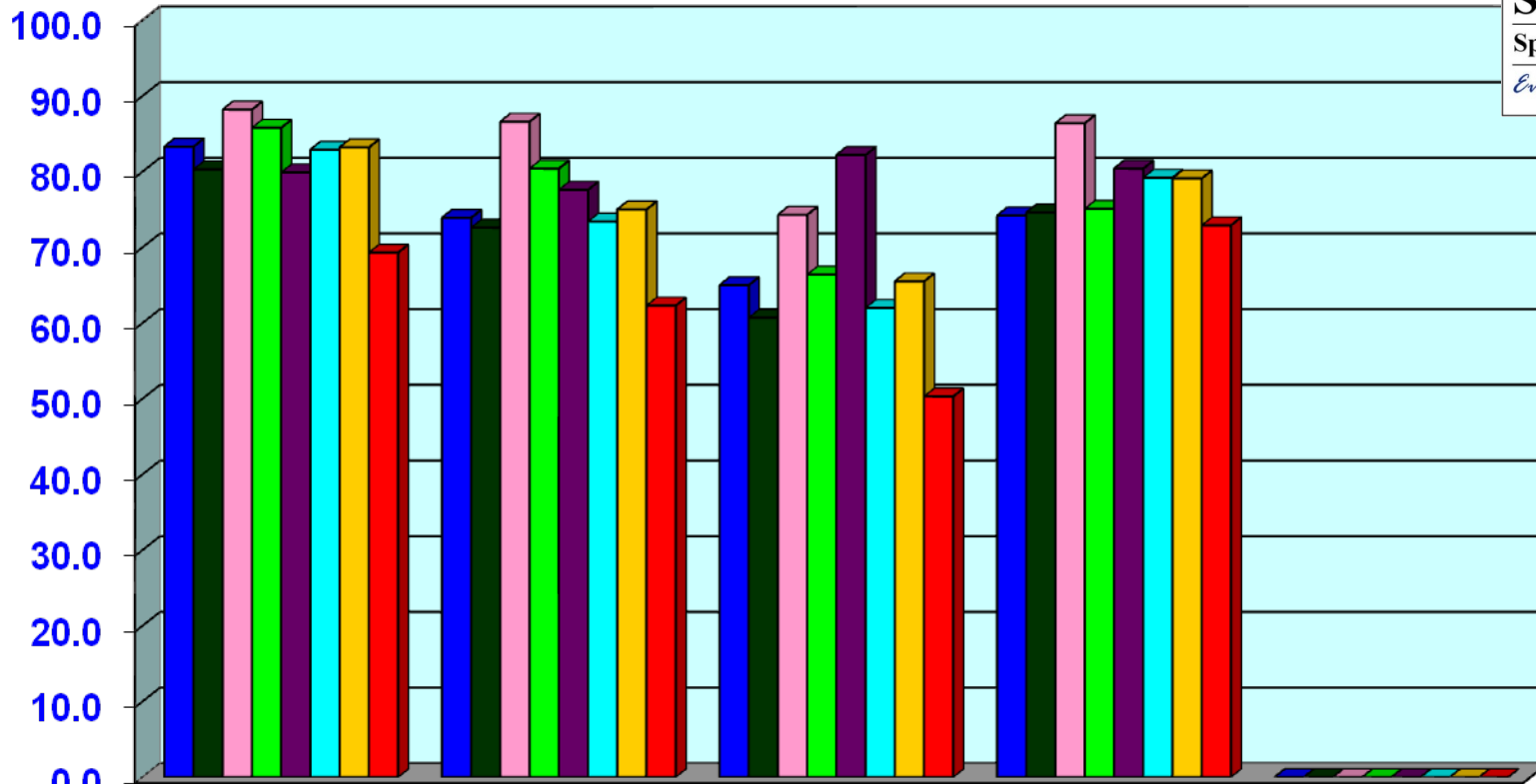
PASS 2012: Percent Exemplary

Writing

School	3	4	5	6	7	8
Abner Creek						
Duncan						
Lyman						
Reidville						
River Ridge						
Wellford						
Beech Springs			42.2			
Berry Shoals			55.8			
D.R. Hill						44.5
Florence Chapel						44.0

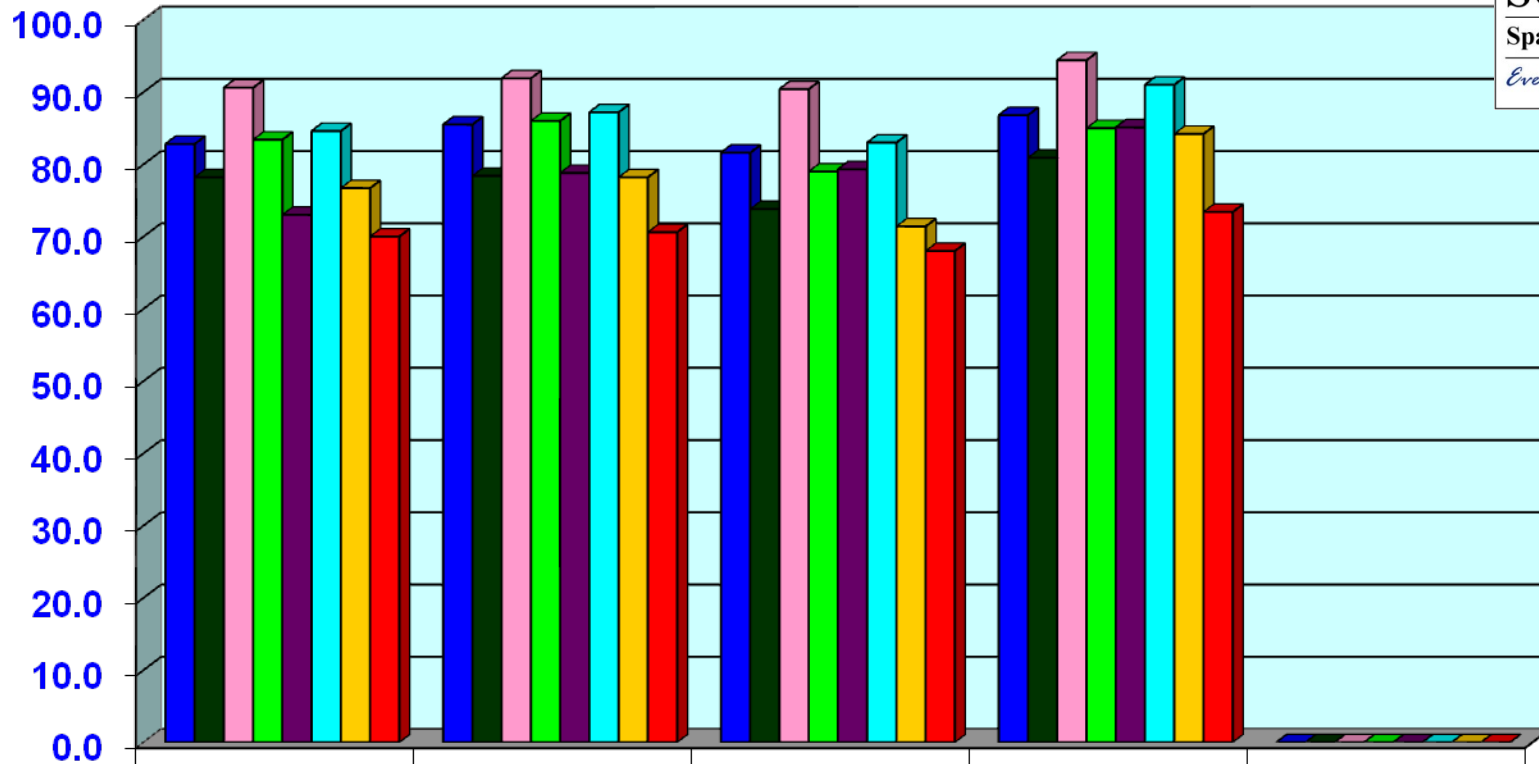
Data Source - SCDOE Website

PASS 2012: Grade 3



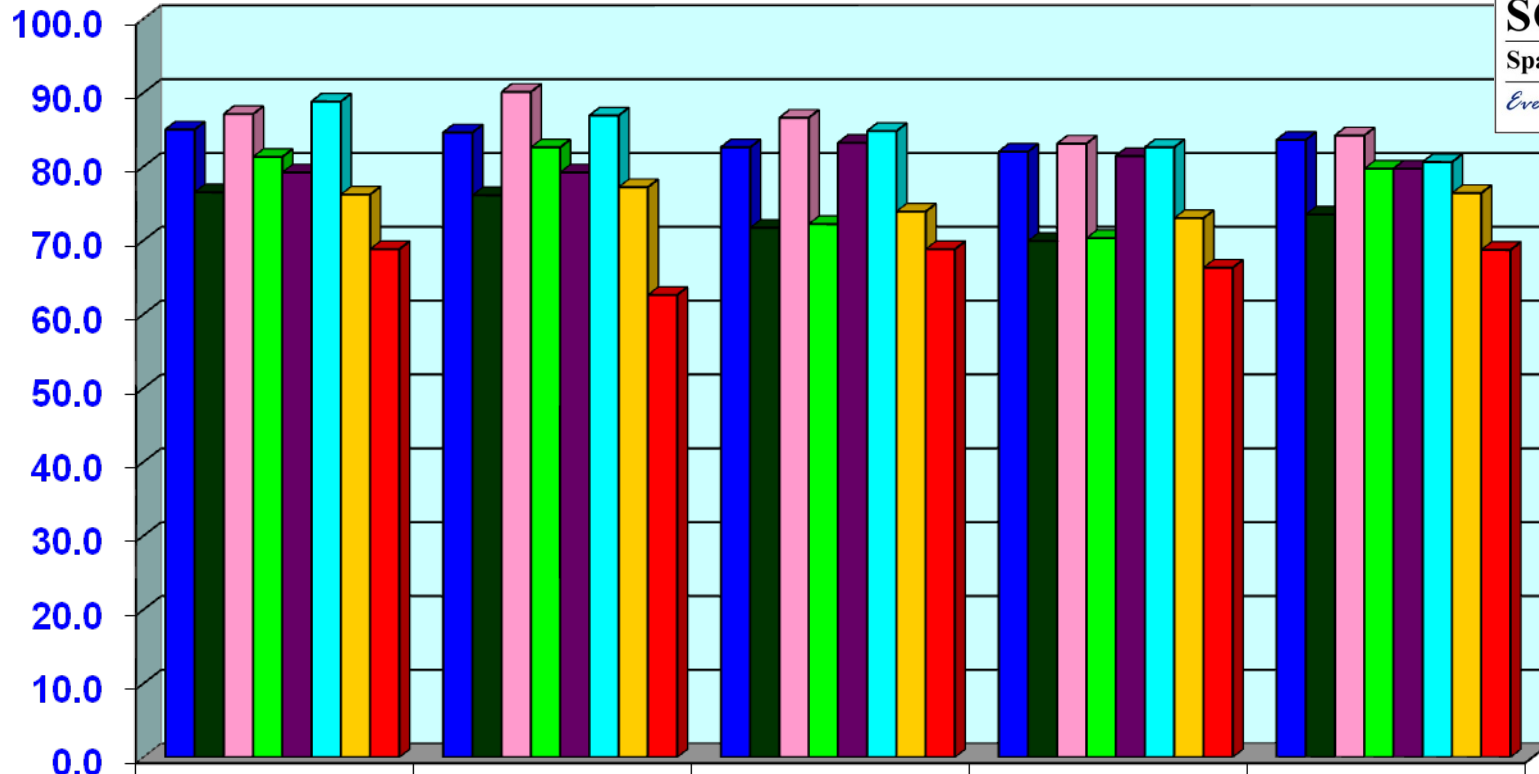
	ELA 3 rd	Math 5 th	Science 5 th	Social Studies 6 th	Writing
■ D5	83.3	73.9	65.0	74.2	0.0
■ State	80.3	72.6	60.7	74.6	0.0
■ D1	88.2	86.6	74.3	86.4	0.0
■ D2	85.8	80.4	66.4	75.1	0.0
■ D3	79.9	77.6	82.2	80.4	0.0
■ D4	82.9	73.4	62.0	79.2	0.0
■ D6	83.2	75.0	65.5	79.1	0.0
■ D7	69.3	62.3	50.3	72.9	0.0

PASS 2012: Grade 4



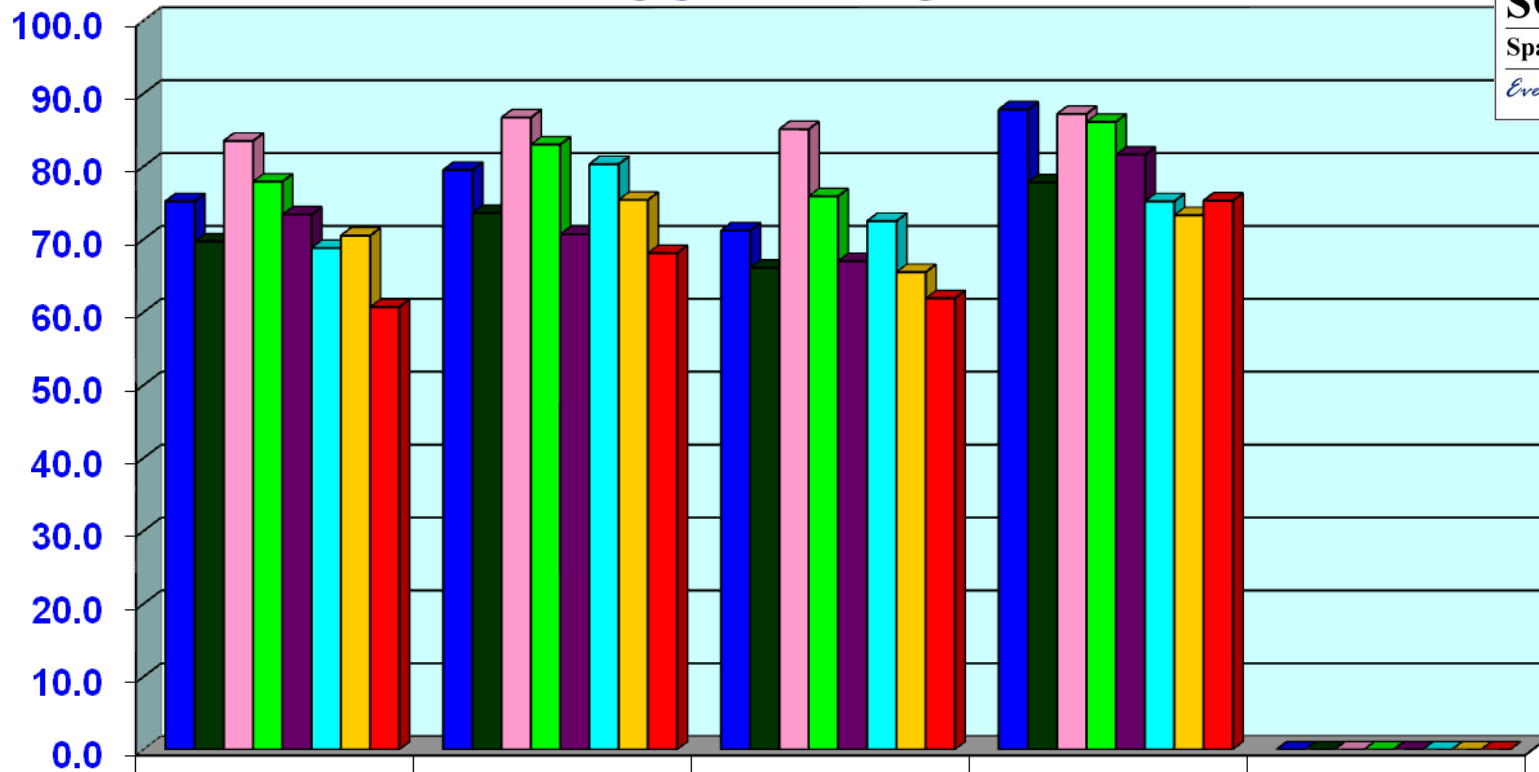
	ELA	Math	Science	Social Studies	Writing
D5	82.8 4 th	85.5 4 th	81.6 3 rd	86.8 3 rd	0.0
State	78.2	78.4	73.8	80.9	0.0
D1	90.6	91.9	90.4	94.4	0.0
D2	83.4	86.0	79.0	85.0	0.0
D3	73.0	78.8	79.3	85.1	0.0
D4	84.6	87.2	83.0	91.0	0.0
D6	76.7	78.2	71.4	84.2	0.0
D7	70.0	70.6	68.0	73.4	0.0

PASS 2012: Grade 5



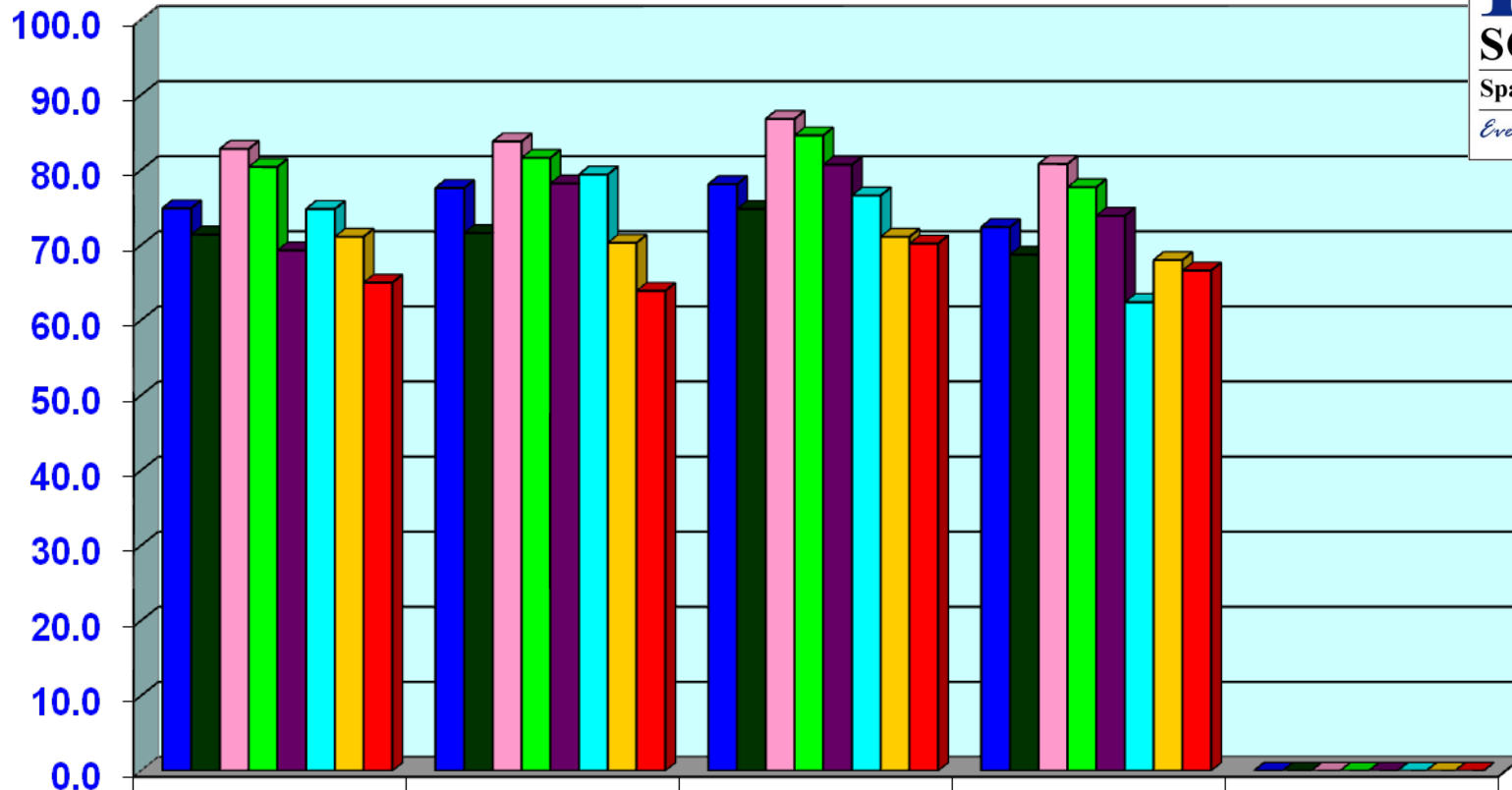
	ELA	Math	Science	Social Studies	Writing
D5	85.0 3 rd	84.6 3 rd	82.6 4 th	82.0 3 rd	83.6 2 nd
State	76.5	76.1	71.7	69.9	73.5
D1	87.1	90.1	86.6	83.1	84.2
D2	81.3	82.6	72.2	70.3	79.7
D3	79.2	79.2	83.2	81.4	79.7
D4	88.8	86.9	84.8	82.6	80.6
D6	76.2	77.2	73.9	73.0	76.4
D7	68.8	62.6	68.8	66.3	68.7

PASS 2012: Grade 6



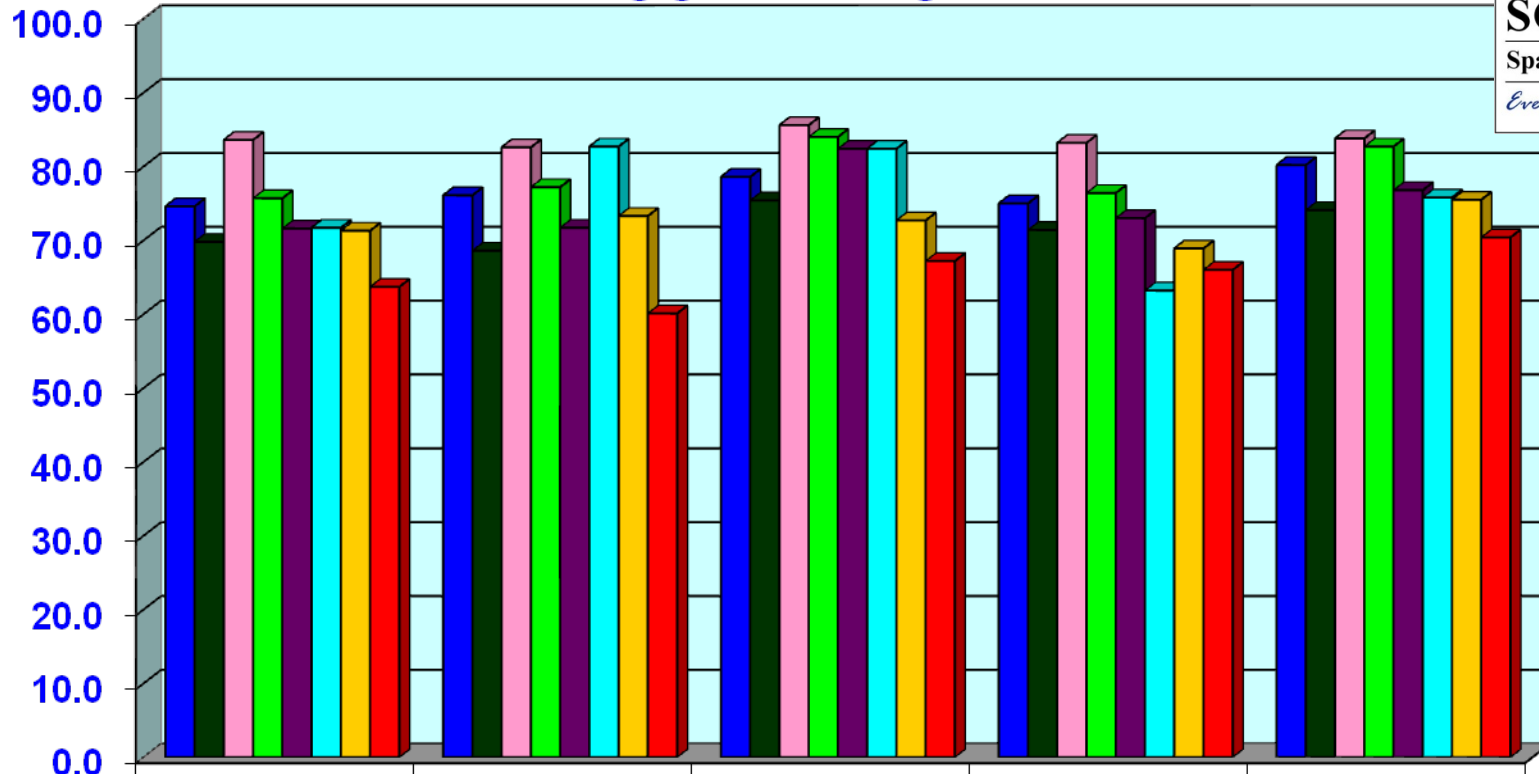
	ELA	Math	Science	Social Studies	Writing
D5	75.2 3 rd	79.5 4 th	71.2 4 th	87.8 1 st	0.0
State	69.7	73.6	66.1	77.8	0.0
D1	83.5	86.7	85.1	87.2	0.0
D2	77.9	83.0	75.9	86.1	0.0
D3	73.4	70.7	67.0	81.6	0.0
D4	68.8	80.3	72.5	75.2	0.0
D6	70.5	75.4	65.5	73.3	0.0
D7	60.7	68.1	61.9	75.3	0.0

PASS 2012: Grade 7



	ELA	Math	Science	Social Studies	Writing
■ D5	74.9 3 rd	77.6 5 th	78.1 4 th	72.4 4 th	0.0
■ State	71.4	71.6	74.8	68.7	0.0
□ D1	82.8	83.8	86.8	80.8	0.0
■ D2	80.4	81.6	84.6	77.7	0.0
■ D3	69.3	78.2	80.7	73.9	0.0
■ D4	74.8	79.4	76.6	62.4	0.0
■ D6	71.1	70.3	71.1	68.0	0.0
■ D7	65.0	63.9	70.2	66.6	0.0

PASS 2012: Grade 8



	ELA	Math	Science	Social Studies	Writing
■ D5	74.6 3 rd	76.1 4 th	78.6 5 th	75.0 3 rd	80.2 3 rd
■ State	69.8	68.6	75.4	71.4	74.1
■ D1	83.6	82.6	85.6	83.2	83.8
■ D2	75.7	77.2	84.0	76.4	82.7
■ D3	71.6	71.7	82.4	73.0	76.8
■ D4	71.7	82.7	82.4	63.2	75.8
■ D6	71.3	73.3	72.7	68.9	75.5
■ D7	63.7	60.1	67.2	66.0	70.4

Data Source



- South Carolina Department of Education Website (October 18, 2012)
 - http://ed.sc.gov/data/pass/2012/show_district_pass_scores.cfm?ID=4205