



Proposed Attendance Lines for August 2024

GOALS



- Neighborhood Schools – Students attend school near where they live.
- Maintain a clean feeder school system.
- Balance enrollment – taking into consideration enrollment capacity.
- Balance enrollment – taking into consideration potential growth.
- Take into consideration traffic flow and bus transportation.

Obstacles and Challenges



- District lines were set by law in 1952. The Board can only change school lines and cannot change the District Five boundary lines.
- Physical barriers: interstate, rivers and lakes with limited or no ways to cross.
- Dense population with no empty space between school lines.

Elementary Schools Enrollment As of 1/10/2023



	<u>Capacity</u>	<u>Enrollment</u>	<u>% Capacity</u>
Abner Creek	964	658	68%
Reidville	964	643	67%
Berry Shoals	952	652	68%
River Ridge	966	717	74%
Duncan	712	612	86%
Tyger River	880	581	66%
Wellford	880	569	65%
Lyman	<u>964</u>	<u>650</u>	<u>67%</u>
Totals	7,282	5,082	70%



Middle Schools Enrollment As of 1/10/2023

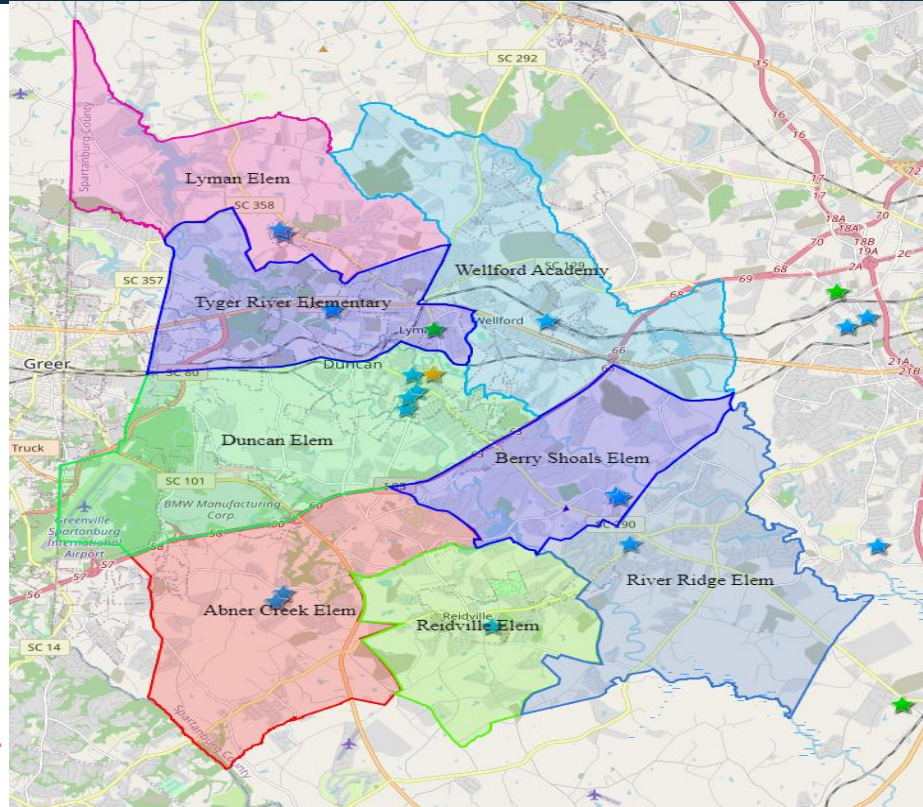


	<u>Capacity</u>	<u>Enrollment</u>	<u>% Capacity</u>
Abner Creek (ACA & RES)	850	608	72%
Florence Chapel (RR & BRSH)	800	707	88%
Beech Springs (DES & TR)	986	540	55%
D R Hill (Lyman & WA)	<u>800</u>	<u>552</u>	<u>69%</u>
Totals	3,611	2,407	67%

Proposed 2024-2025 Elementary Attendance Lines



District
Elementary
Schools



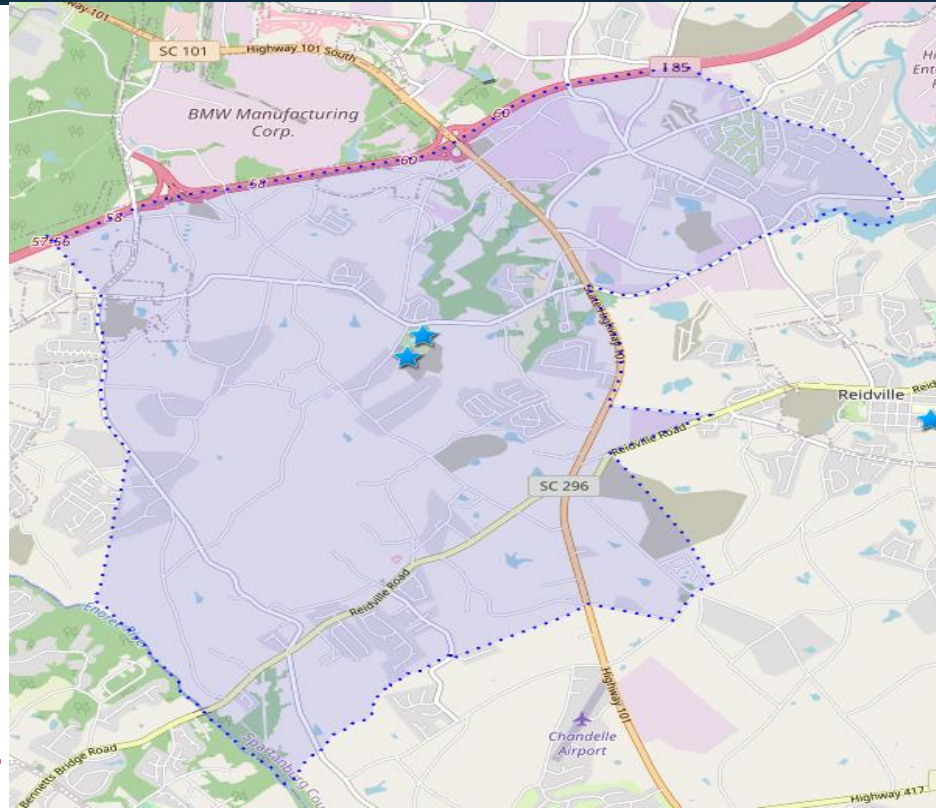
EVERY CHILD, EVERY DAY



Proposed 2024-2025 Attendance Lines



Abner Creek
Academy



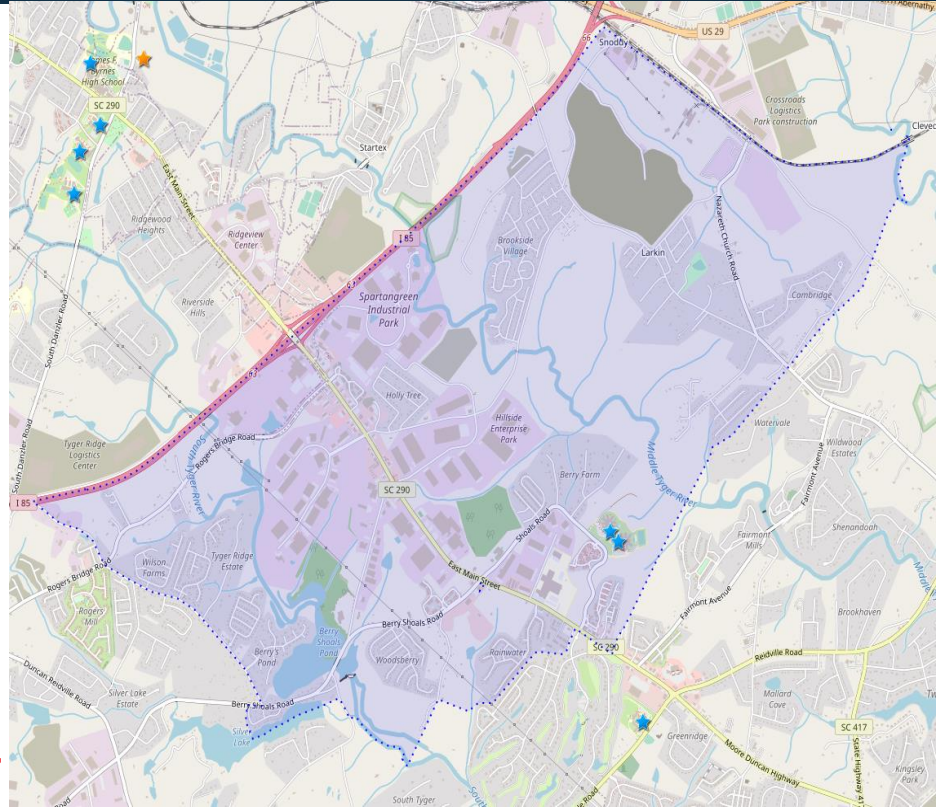
EVERY CHILD, EVERY DAY.



Proposed 2024-2025 Attendance Lines



Berry Shoals Elementary

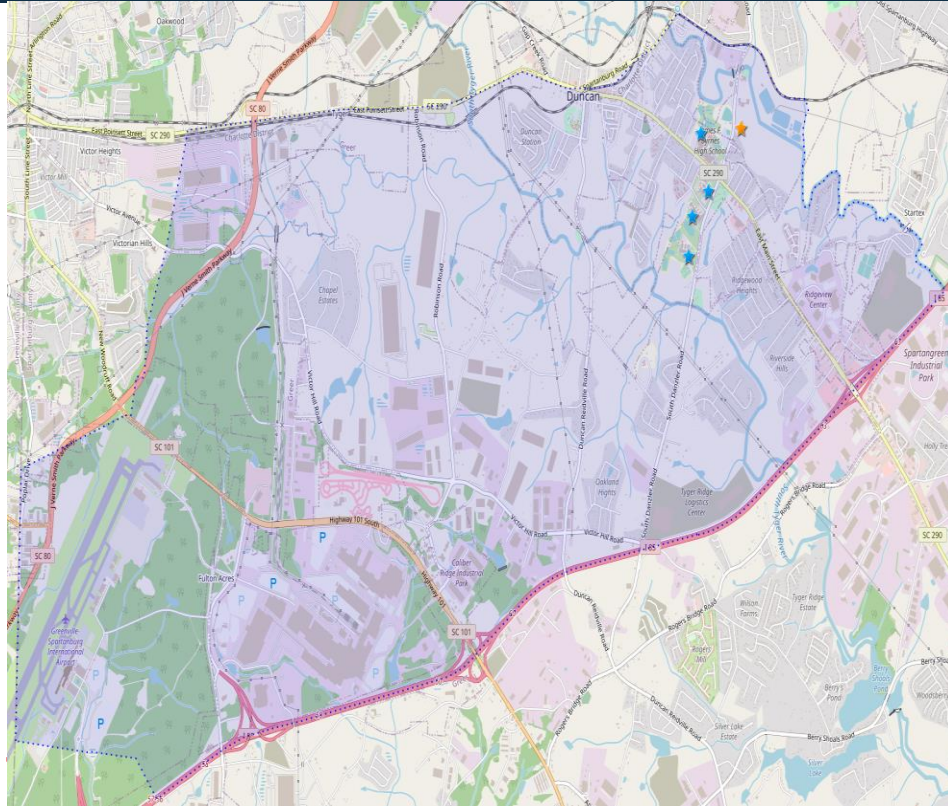


EVERY CHILD, EVERY DAY.

Proposed 2024-2025 Attendance Lines



Duncan Elementary



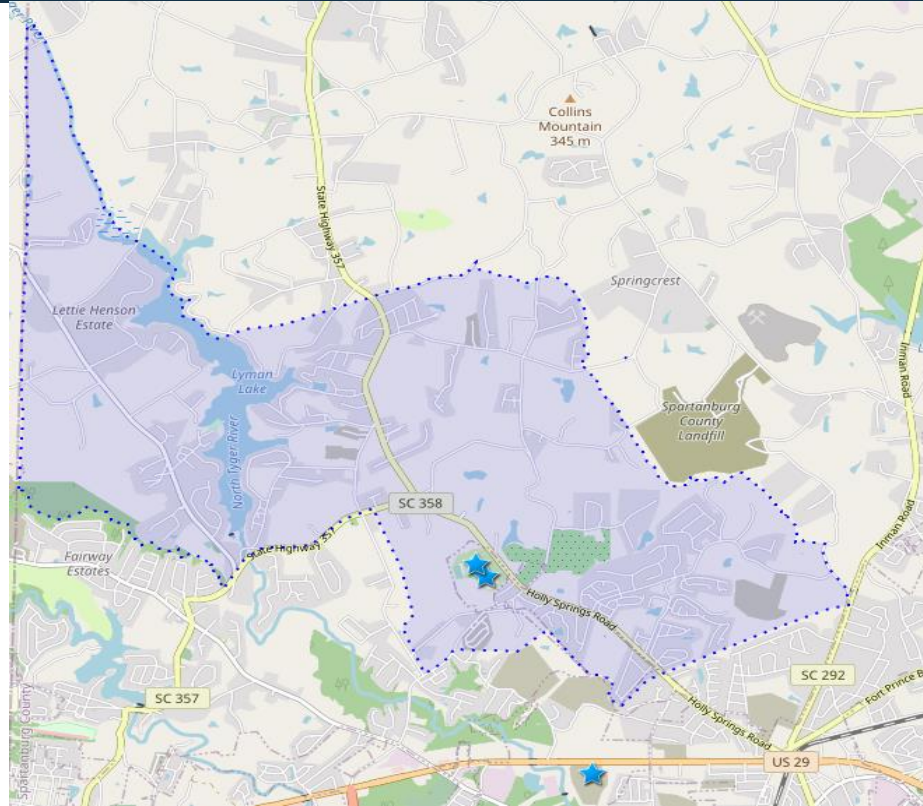
EVERY CHILD, EVERY DAY



Proposed 2024-2025 Attendance Lines



Lyman
Elementary

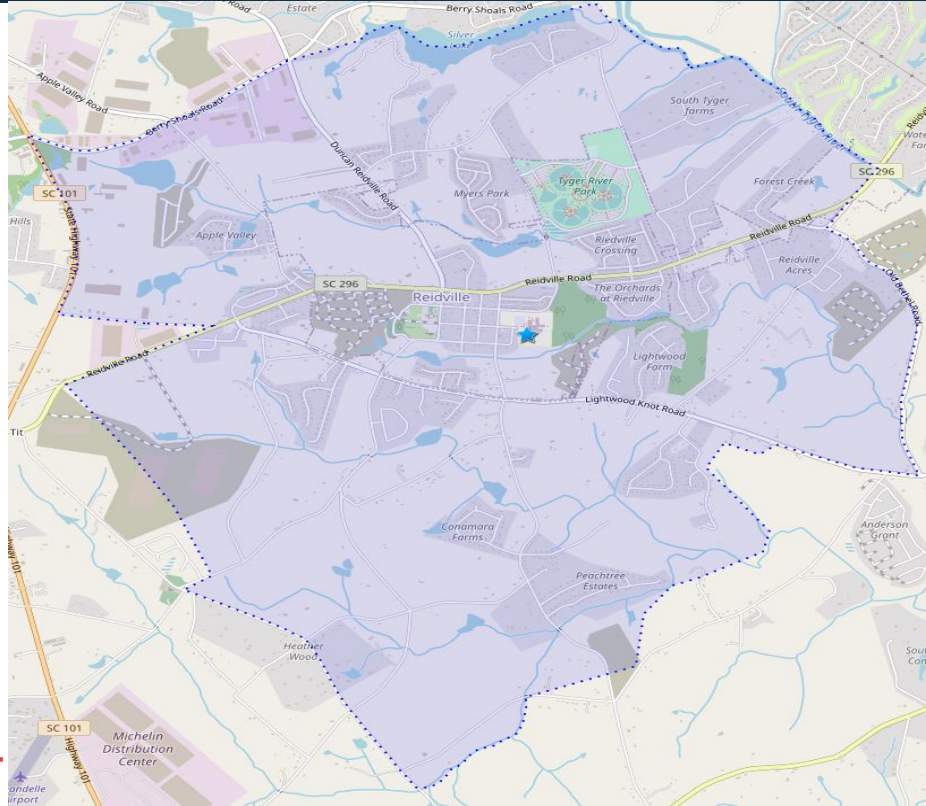


EVERY CHILD, EVERY DAY.

Proposed 2024-2025 Attendance Lines



Reidville Elementary



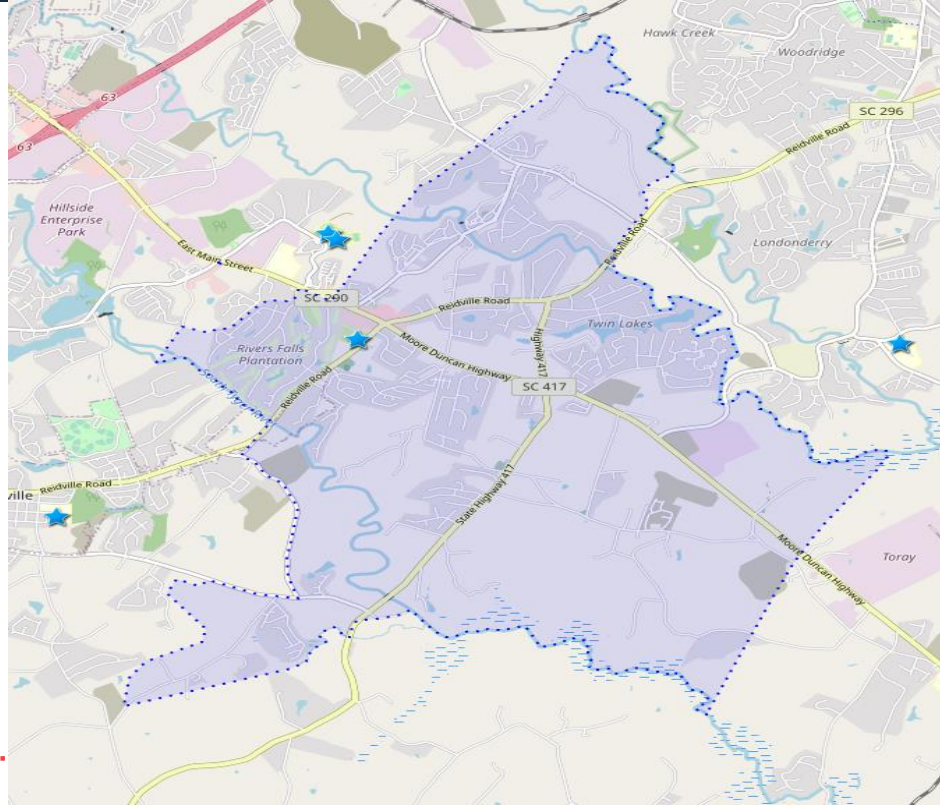
EVERY CHILD, EVERY DAY.



Proposed 2024-2025 Attendance Lines



River Ridge Elementary



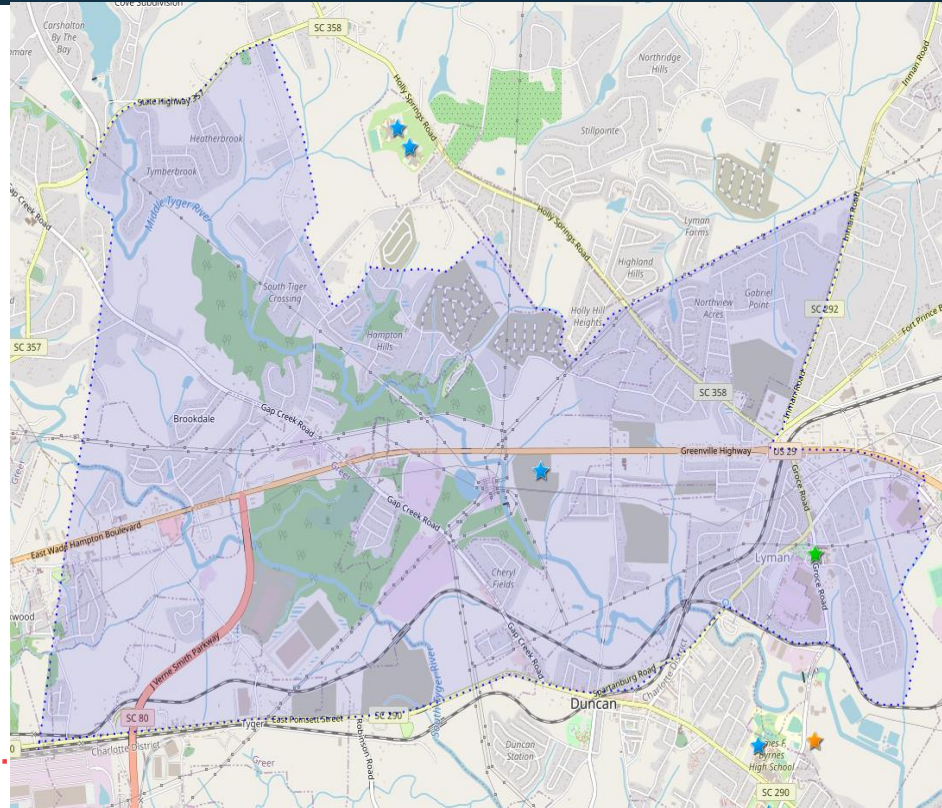
EVERY CHILD, EVERY DAY.



Proposed 2024-2025 Attendance Lines



Tyger River Elementary

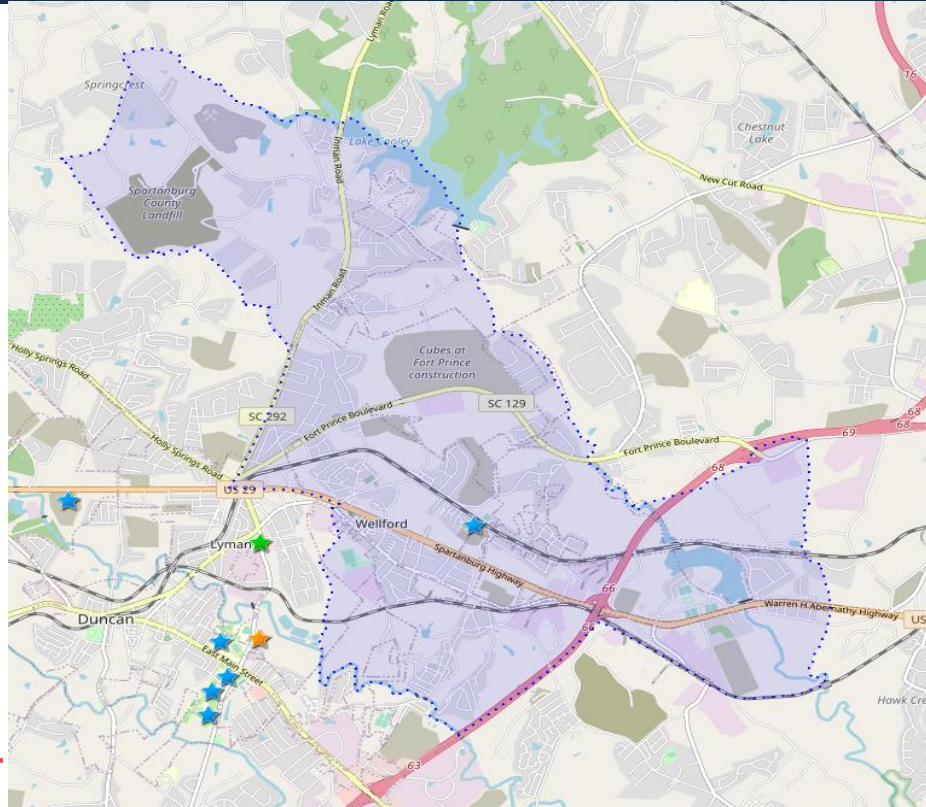


EVERY CHILD, EVERY DAY.

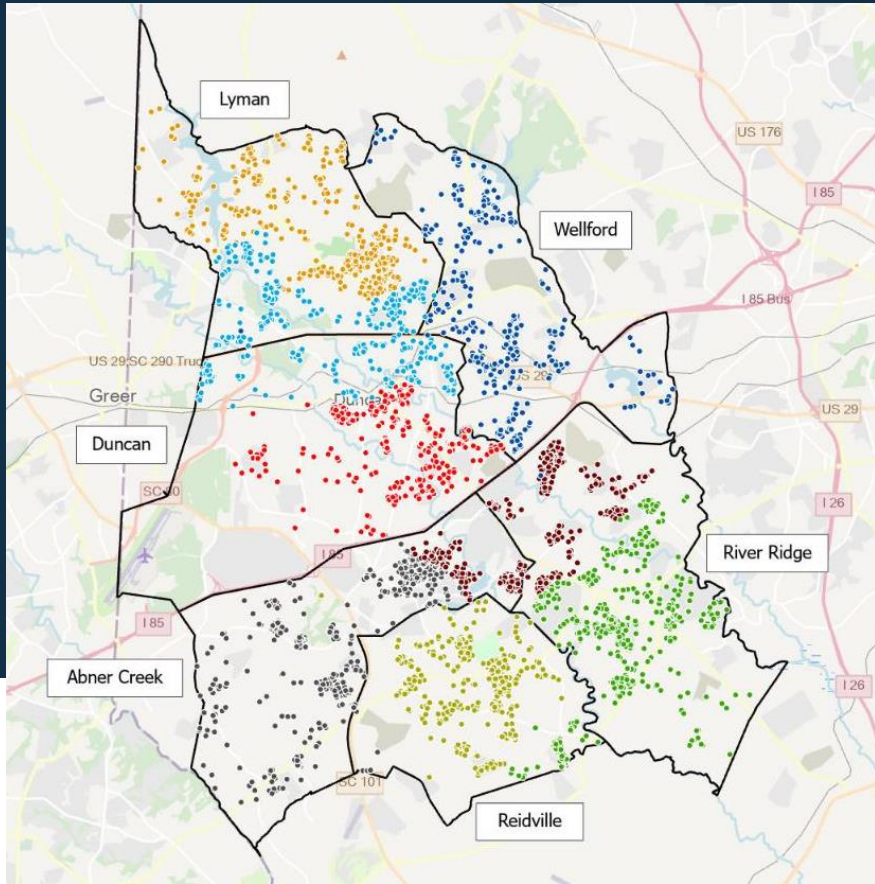
Proposed 2024-2025 Attendance Lines



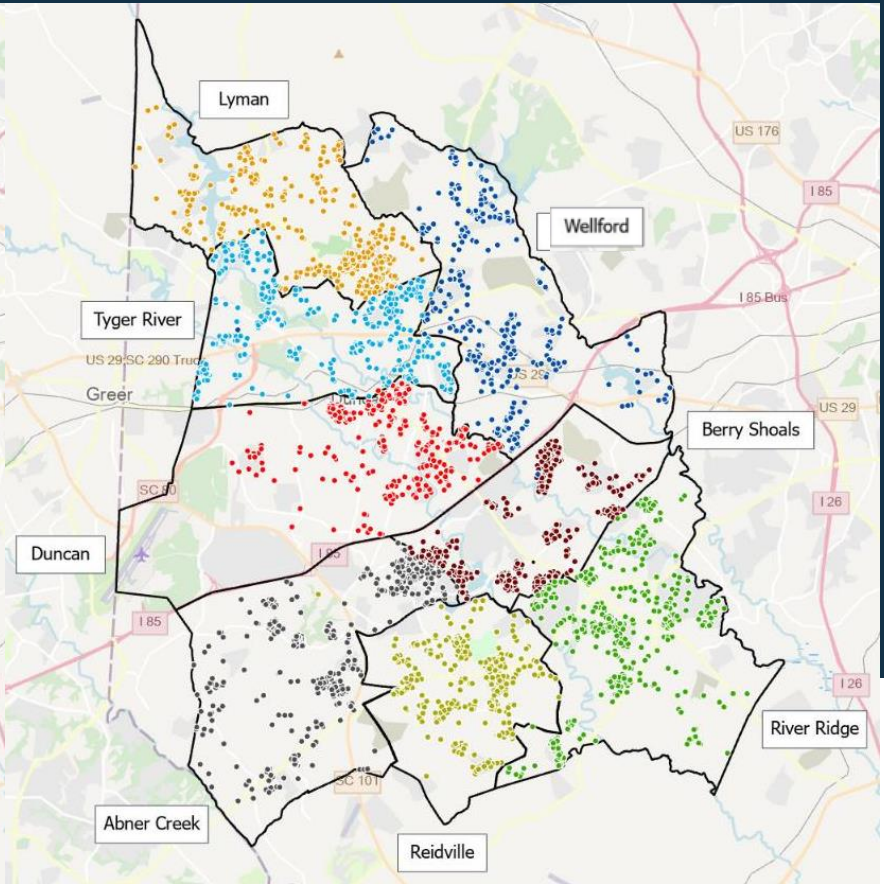
Wellford
Academy



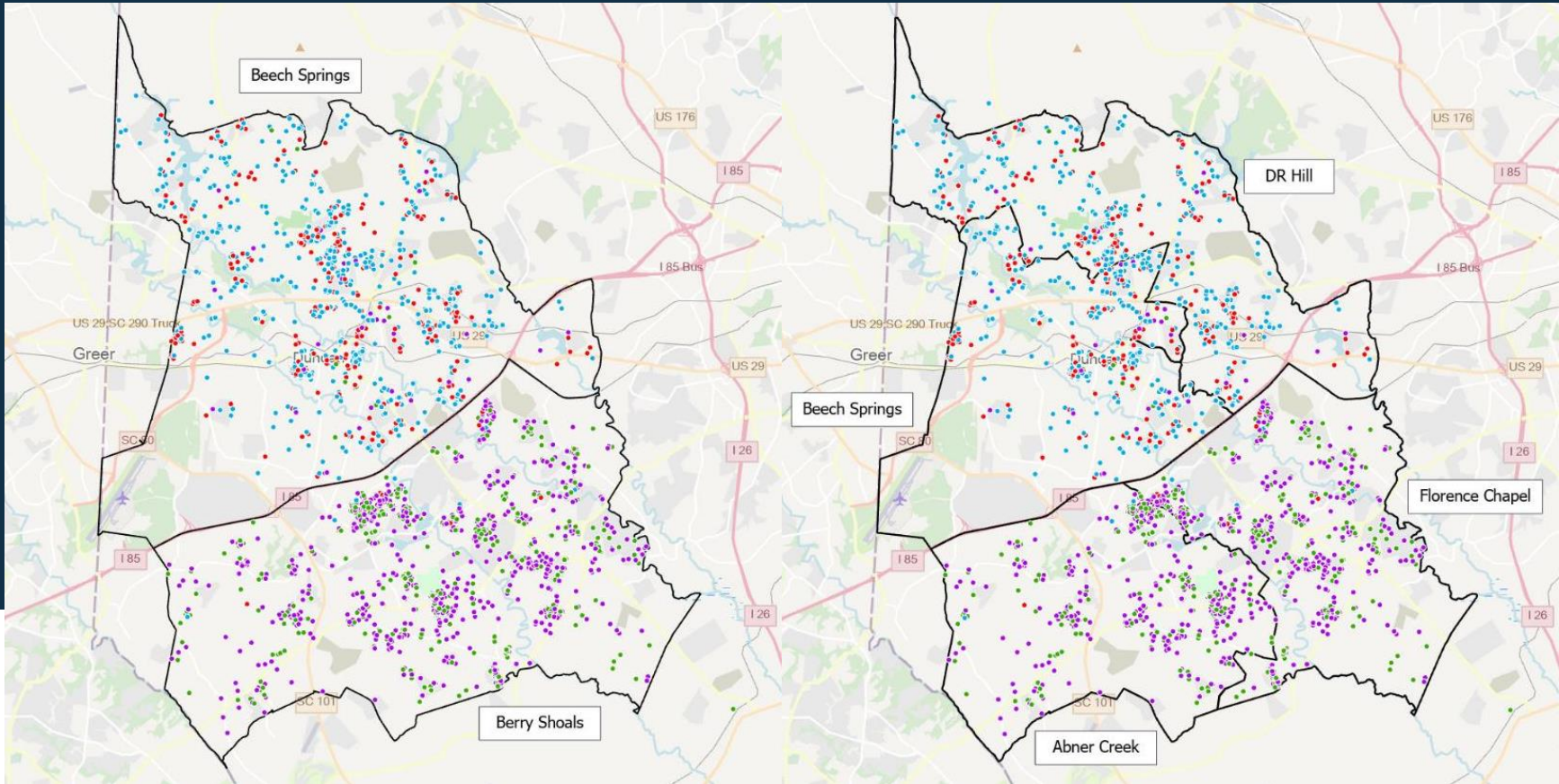
EVERY CHILD, EVERY DAY.



Existing ES Attendance Zone Geocode

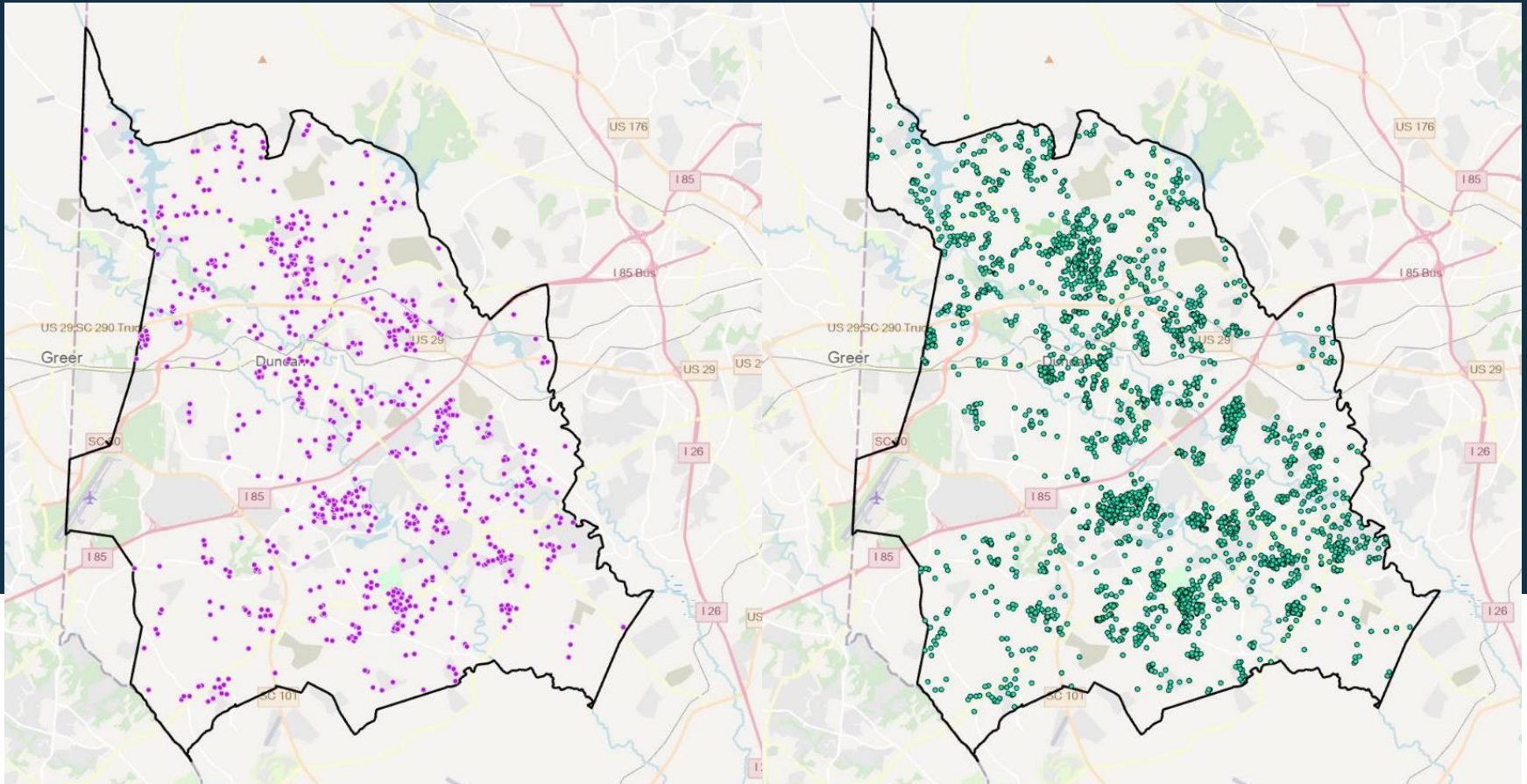


New ES Attendance Zone Geocode
(Baseline for Projection)



Existing Intermediate + MS Attendance Zone Geocode

New MS Attendance Zone Geocode
(Baseline for Projection)



Freshman Academy Geocode

Byrnes High School Geocode

Grandfathering 2024-2025



- Rising 5th & 8th graders and school aged siblings.
- Not eligible for bus transportation.
- School Choice will still be available as space allows at all schools.
- School Choice Applications open Oct. 2nd and close Nov. 21st.

Proposed Attendance Lines Link



- Link for address search for 2024-2025 school year.
- <https://www.infofinder.com/ifi/?cid=SSD020CPAXVOM>