



**mcmillan
pazdan
smith**
ARCHITECTURE



**Byrnes High School Phase 3
Demolition GMP**



Phase 3 Demolition Plan

ATHLETICS BUILDING

EXISTING PHASE 1 BUILDING

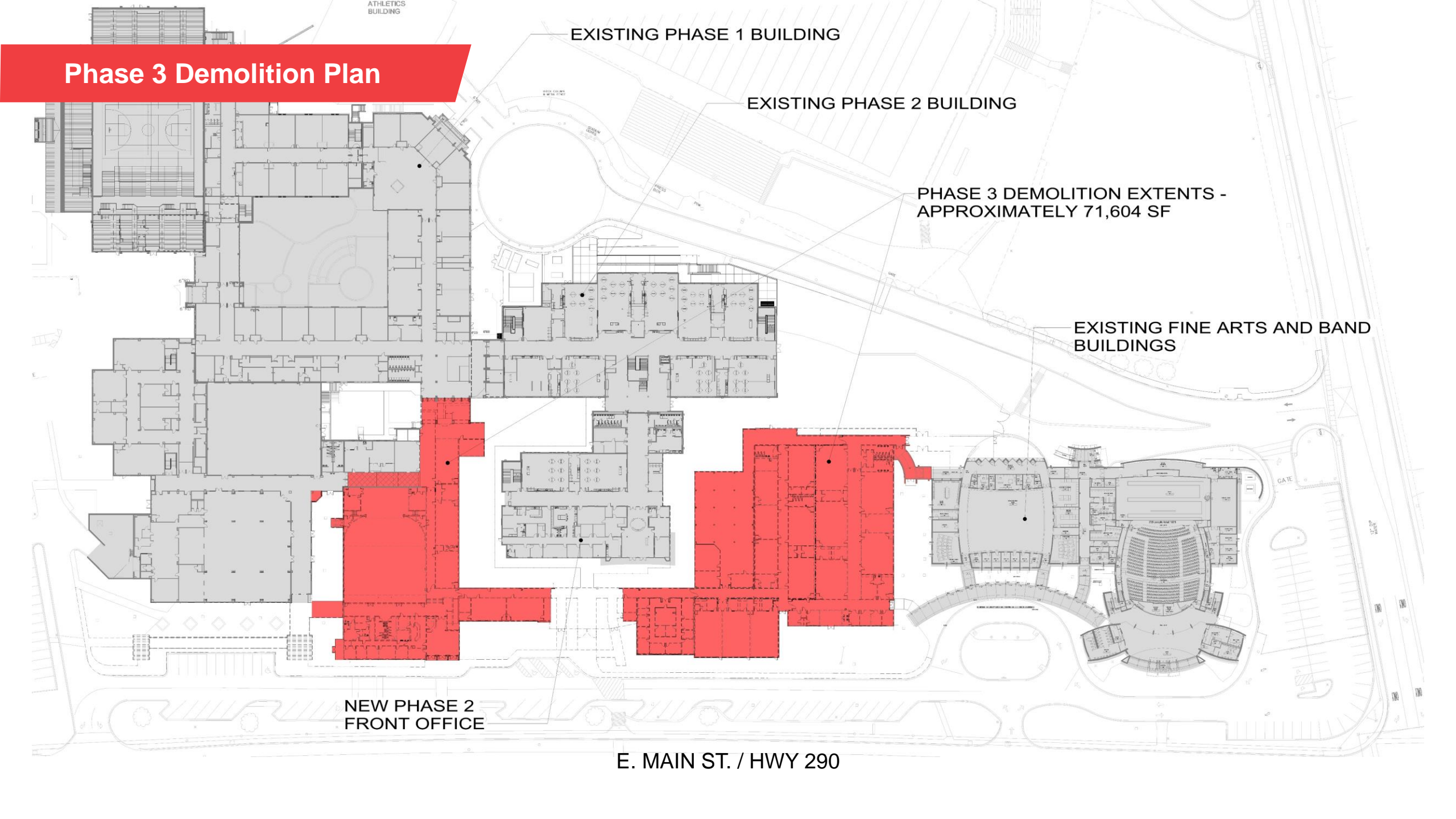
EXISTING PHASE 2 BUILDING

PHASE 3 DEMOLITION EXTENTS - APPROXIMATELY 71,604 SF

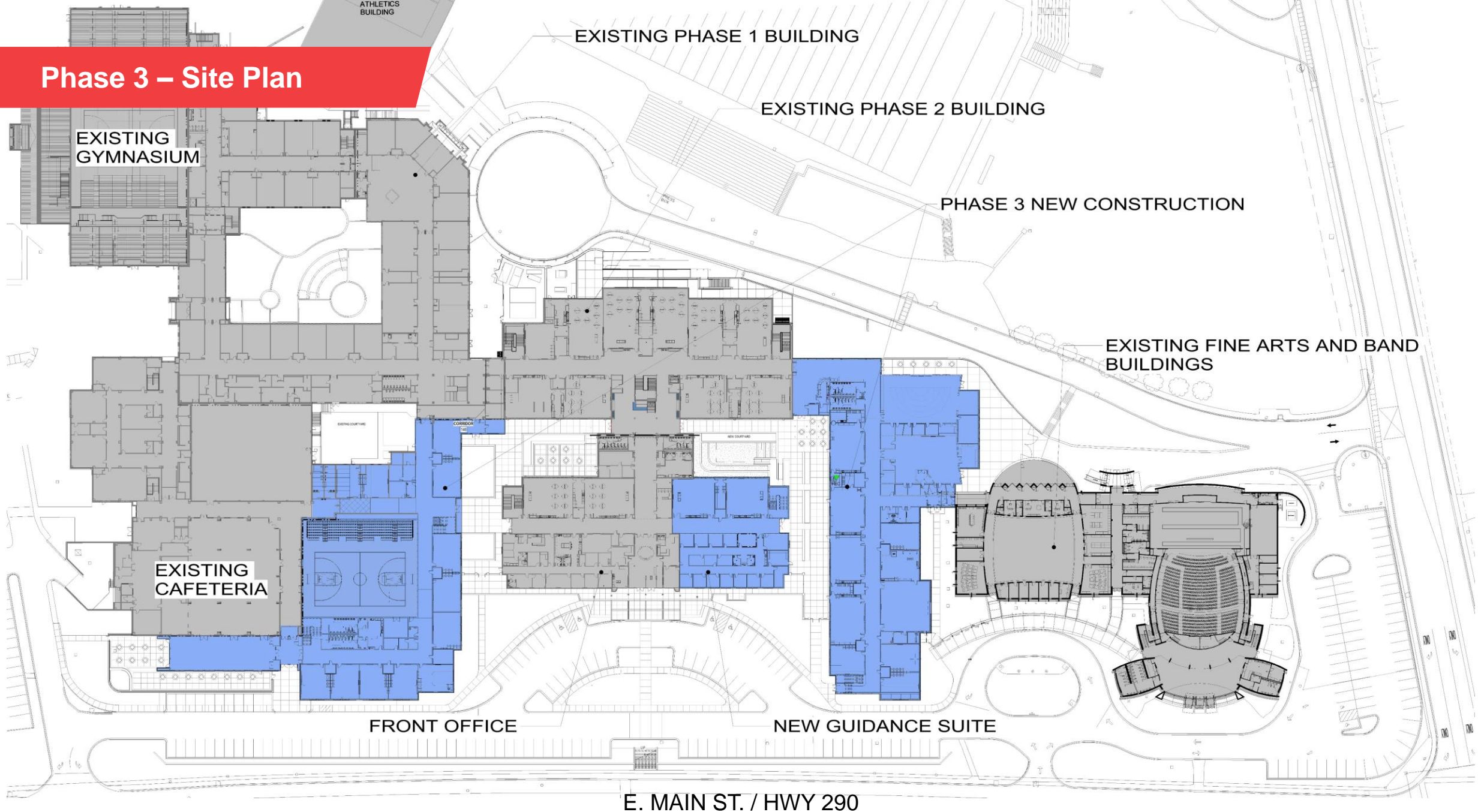
EXISTING FINE ARTS AND BAND BUILDINGS

NEW PHASE 2 FRONT OFFICE

E. MAIN ST. / HWY 290



Phase 3 – Site Plan



EXISTING PHASE 1 BUILDING

EXISTING PHASE 2 BUILDING

PHASE 3 NEW CONSTRUCTION

EXISTING FINE ARTS AND BAND BUILDINGS

EXISTING GYMNASIUM

EXISTING CAFETERIA

FRONT OFFICE

NEW GUIDANCE SUITE

E. MAIN ST. / HWY 290

ATHLETICS BUILDING

Byrnes High School Phase 3 Demolition GMP

Abatement of hazardous materials, demolition of approximately 71,600 square feet of building, installation of temporary covered walkway and fencing, procurement of long-lead electrical equipment, erosion control & site demolition

GUARANTEED MAXIMUM PRICE PRESENTATION TO THE BOARD OF TRUSTEES	
Demo & Abatement	\$1,608,482
Site	\$487,861
GMP TOTAL	\$2,096,343

(GMP includes a Contingency of \$200,00)

