



Facilities Update 8/28/23



Construction Projects



EVERY CHILD, EVERY DAY.

Byrnes Phase 2



EVERY CHILD, EVERY DAY.



EVERY CHILD, EVERY DAY.





EVERY CHILD, EVERY DAY.





EVERY CHILD, EVERY DAY.





EVERY CHILD, EVERY DAY.

Byrnes Phase 2



Complete:

- Stair and elevator blockwork
- Admin windows & ext. doors

Ongoing:

- Admin windows, ext. doors & drywall
- Classroom building steel erection

Beech Springs



EVERY CHILD, EVERY DAY.



EVERY CHILD, EVERY DAY.





EVERY CHILD, EVERY DAY.



EVERY CHILD, EVERY DAY.



EVERY CHILD, EVERY DAY.





EVERY CHILD, EVERY DAY.



EVERY CHILD, EVERY DAY.



EVERY CHILD, EVERY DAY.





EVERY CHILD, EVERY DAY.



Beech Springs Gym



Upcoming:

- Overhead mechanical, plumbing and electrical
- Metal roof panel installation
- Sidewalk installation
- Gym scheduled completion 3/15/24
- * Portables removed 8/30/23

Berry Shoals



EVERY CHILD, EVERY DAY.





EVERY CHILD, EVERY DAY.





EVERY CHILD, EVERY DAY.





EVERY CHILD, EVERY DAY.





EVERY CHILD, EVERY DAY.



New Tyger River Elementary



EVERY CHILD, EVERY DAY.



EVERY CHILD, EVERY DAY.





EVERY CHILD, EVERY DAY.





EVERY CHILD, EVERY DAY.



New Tyger River Elementary



- Roof installed, all areas dry

Upcoming:

- Admin area hang sheetrock
- Grade 5 above ceiling complete
- Window installation 75% complete
- Scheduled completion: 3/15/24



Reidville Elementary Addition



EVERY CHILD, EVERY DAY.





EVERY CHILD, EVERY DAY.





EVERY CHILD, EVERY DAY.



EVERY CHILD, EVERY DAY.





EVERY CHILD, EVERY DAY.





EVERY CHILD, EVERY DAY.





EVERY CHILD, EVERY DAY.



Hwy 296 Traffic Signal



EVERY CHILD, EVERY DAY.

New Abner Creek Middle School



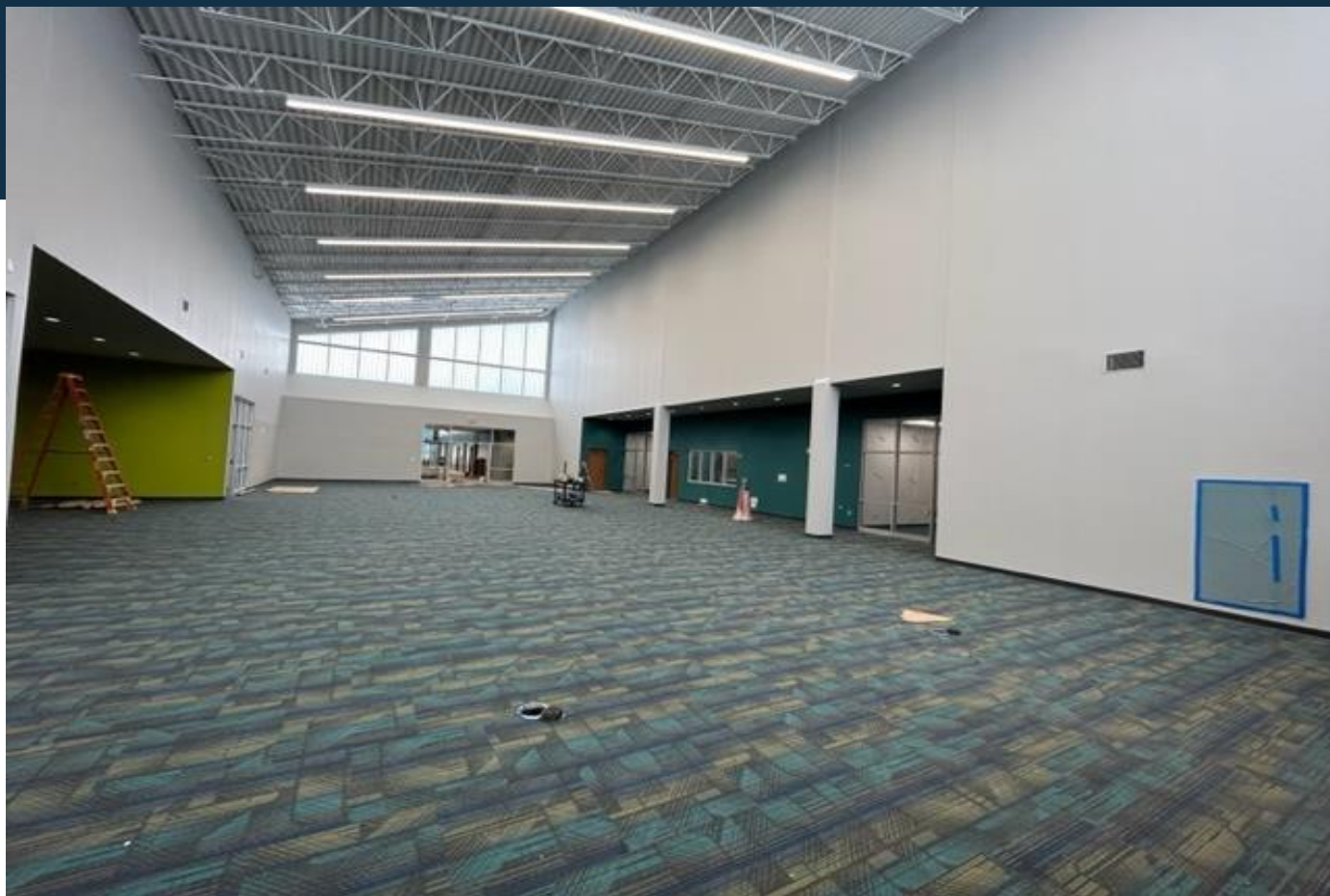
EVERY CHILD, EVERY DAY.





EVERY CHILD, EVERY DAY.





EVERY CHILD, EVERY DAY.





EVERY CHILD, EVERY DAY.





EVERY CHILD, EVERY DAY.





EVERY CHILD, EVERY DAY.



Gin House Rd. Traffic Signal



EVERY CHILD, EVERY DAY.



New Abner Creek Middle School



Upcoming:

- Grade 7-8 cabinets and flooring
- Kitchen flooring install
- Concessions cabinets
- Punch list all areas except 7-8 wings
- OSF Final Inspection 10/24/23
- Road Improvement status



New Wellford Academy



EVERY CHILD, EVERY DAY.



EVERY CHILD, EVERY DAY.

New Wellford Academy



Complete:

- Existing building asbestos removal

Upcoming:

- Admin, 4K & K5 overhead 40%-90%
- Grade 4 slab on deck poured 8/24/23
- Grade 5 block walls ongoing
- Plan to set last steel 10/31/23