

FACILITIES UPDATE

8-24-15

BYRNES HIGH SCHOOL CONSTRUCTION UPDATE

Perimeter Rd. & Groce Rd.



Perimeter Rd. View



Retention Pond



Bus Loop Exit



Bus Loop Entrance



Field House



Field House View to 700



Field House View to 900







800 Old Bus Drive Entrance



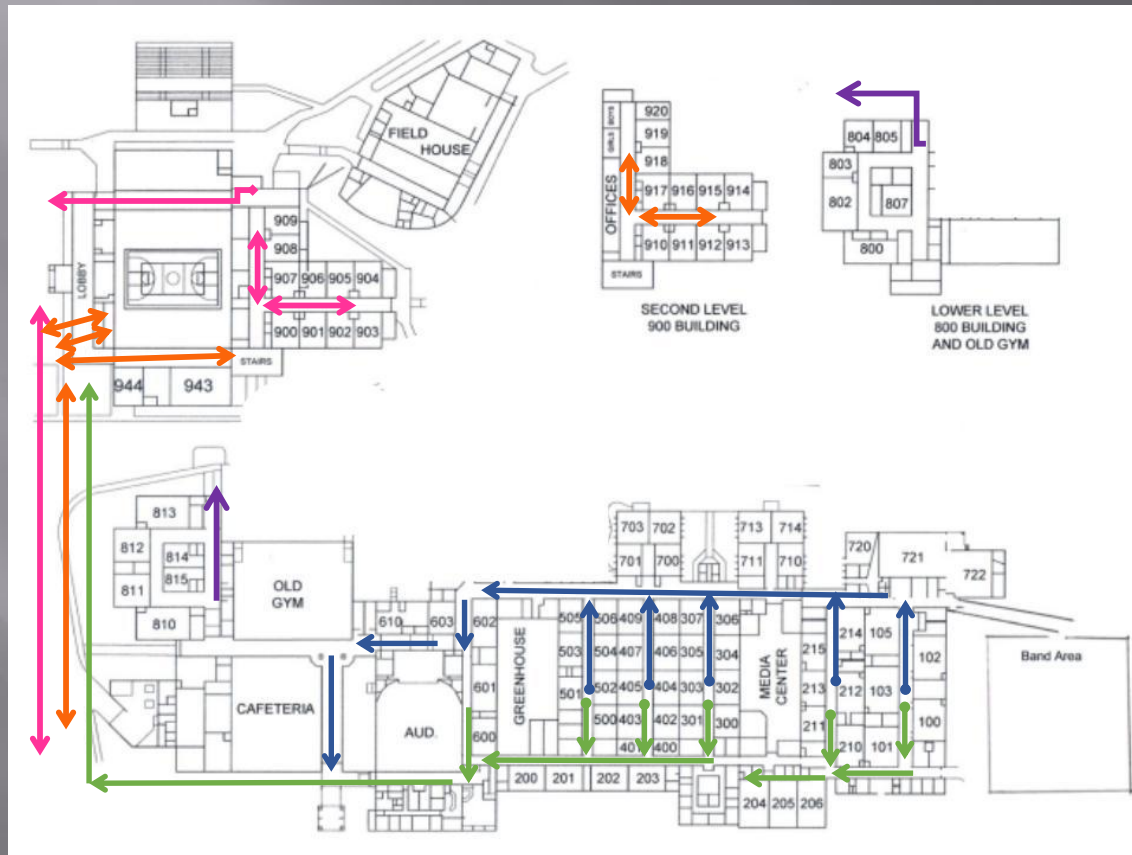
Old Bus Drive View



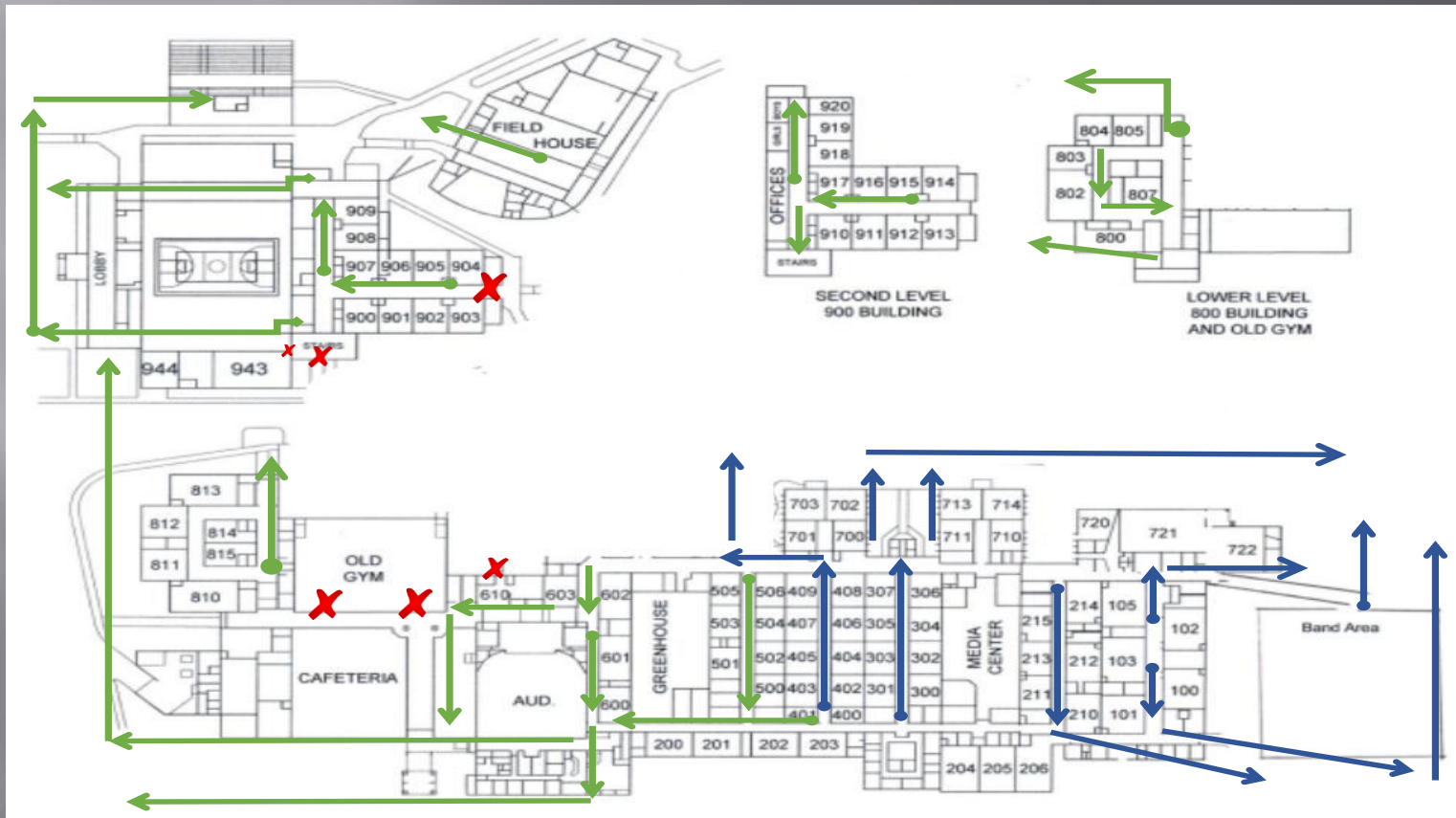
900 Drama Room Entrance



BHS Student Movement



Student Movement Cont.



BHS Value Engineering

- ▣ Twenty-Three (23) items were considered to reduce project costs, while maintaining the quality, function and appearance of the facility.
- ▣ \$505,000 savings at this time

LYMAN ELEMENTARY CONSTRUCTION UPDATE

Construction Entrance



Geothermal Wells



New Kg Exit



New Kg Rooms



New Wing Corridor



New Wing Side View



Temporary Playground



Facilities Update

- ▣ Painting Projects
 - Florence Chapel Middle School
 - Reidville Elementary School

-Florence Chapel Middle School



Reidville Elementary School



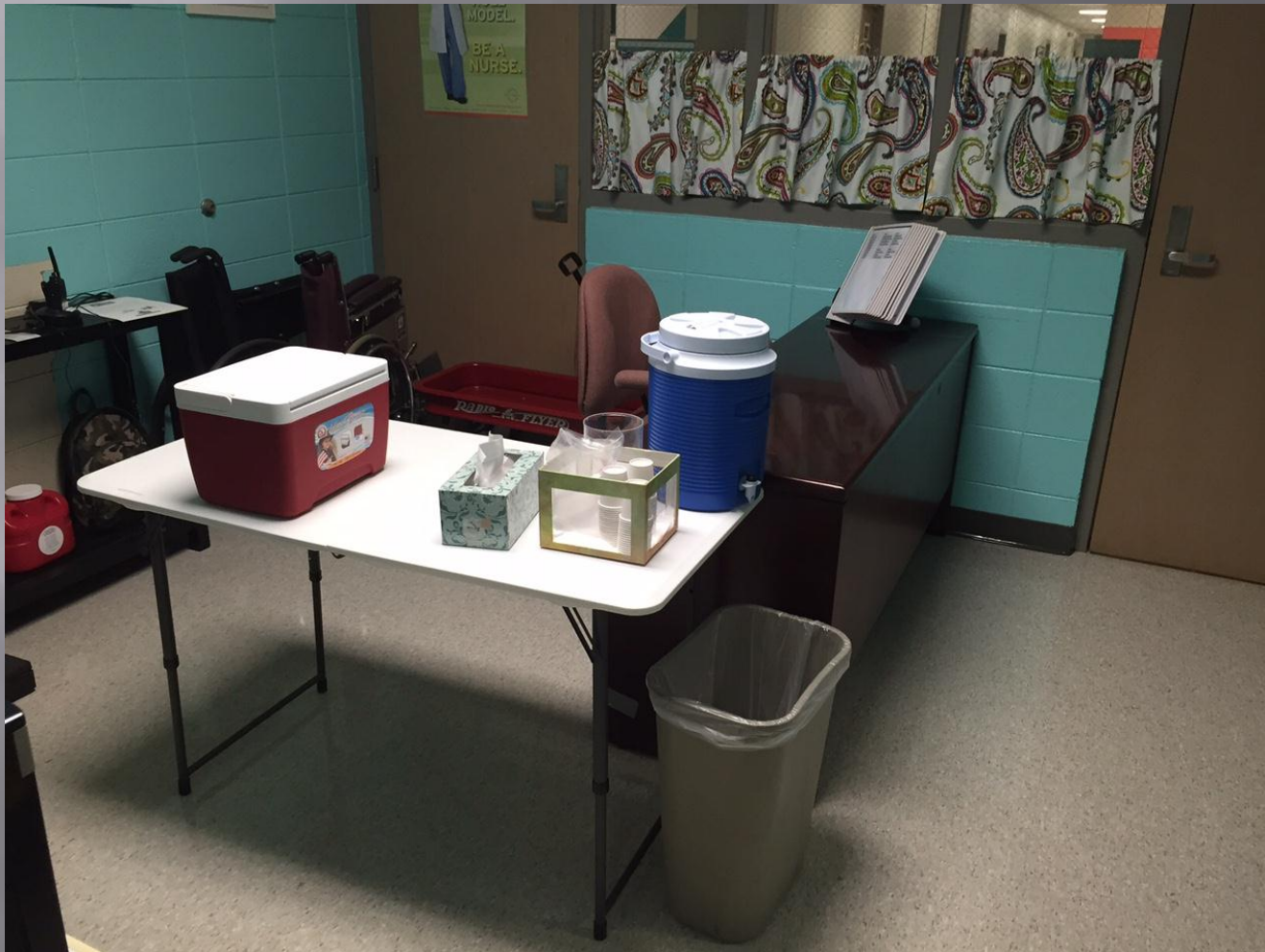
Floor Covering: Beech Media



Beech Hallways (2)



Beech Nurse's Office



Wellford Office



BFA Office



BFA Hallway



BFA Field Bleachers (Home)



Transportation Office



District Office



District Office (Cont.)



Cross Country Course Academy Park



BHS/ BFA Athletic Locker Upgrade



BFA Football/Lacross Basketball



BFA PE



Miscellaneous

- ▣ Web-Based Time Clock: Bus Drivers and Custodians
- ▣ Middle School Shuttle Bus Student Check-in/Check-out System
- ▣ Transfinder Routing/Demographic Software System
- ▣ InfoSnap On-line Student Registration System
- ▣ Traffic Control Contract with Duncan PD and Lyman PD