



# Facilities Update September 27, 2021



# New Softball Stadium



EVERY CHILD, EVERY DAY.



**EVERY CHILD, EVERY DAY.**



**EVERY CHILD, EVERY DAY.**



# Resurface BHS Track



EVERY CHILD, EVERY DAY.



**EVERY CHILD, EVERY DAY.**





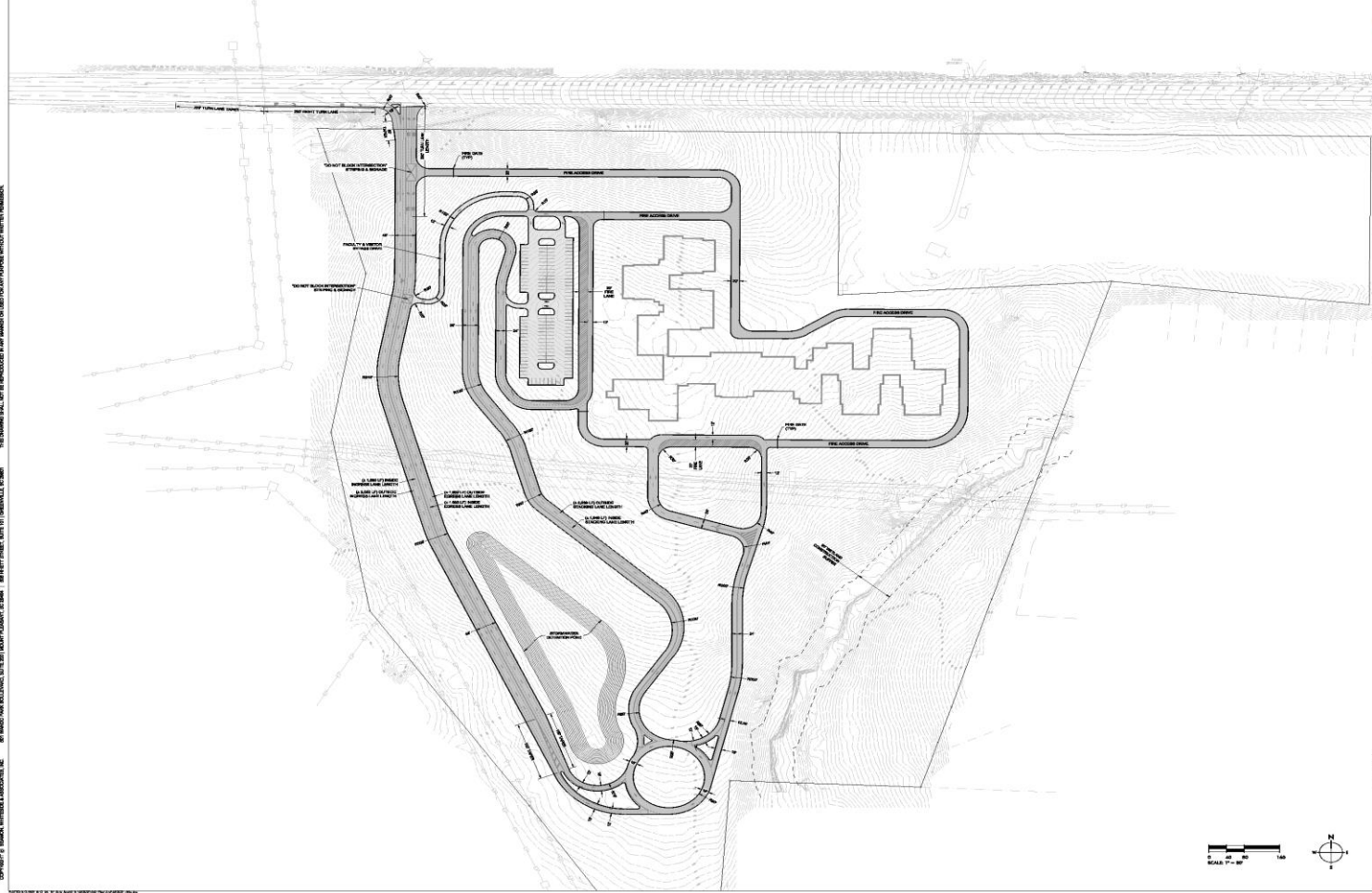
# New ES Property on US 29



EVERY CHILD, EVERY DAY.

THIS DRAWING SHALL NOT BE REPRODUCED OR TRANSMITTED IN ANY FORM OR BY ANY MEANS, ELECTRONIC OR MECHANICAL, INCLUDING PHOTOCOPYING, RECORDING, OR BY ANY INFORMATION STORAGE AND RETRIEVAL SYSTEM.

CONCEPT © SHAW-WHITE ARCHITECTURAL, INC. 801 HUNTER PARK HOLLOW, SUITE 100, MOUNT PLEASANT, SC 29524 | 803.777.7777 | WWW.SHAW-WHITE.COM | SHEET 001 OF 001



SHAW-WHITE ARCHITECTURAL, INC.  
 801 HUNTER PARK HOLLOW, SUITE 100  
 MOUNT PLEASANT, SC 29524  
 803.777.7777  
 WWW.SHAW-WHITE.COM



DATE: 08/20/2024

VINEYARD ELEMENTARY SCHOOL  
 MOUNT PLEASANT COUNTY, SC

DATE:	08/20/2024
BY:	GS
CHECKED BY:	GS
PROJECT:	VINEYARD ELEMENTARY SCHOOL
DATE:	08/20/2024
BY:	GS
CHECKED BY:	GS
PROJECT:	VINEYARD ELEMENTARY SCHOOL



EVERY CHILD, EVERY DAY.





# Wellford Academy Portables



EVERY CHILD, EVERY DAY.



**EVERY CHILD, EVERY DAY.**



**EVERY CHILD, EVERY DAY.**



# Transaction Windows (District-wide)



EVERY CHILD, EVERY DAY.



EVERY CHILD, EVERY DAY.





**EVERY CHILD, EVERY DAY.**



# New MS on Gin House Rd.



EVERY CHILD, EVERY DAY.











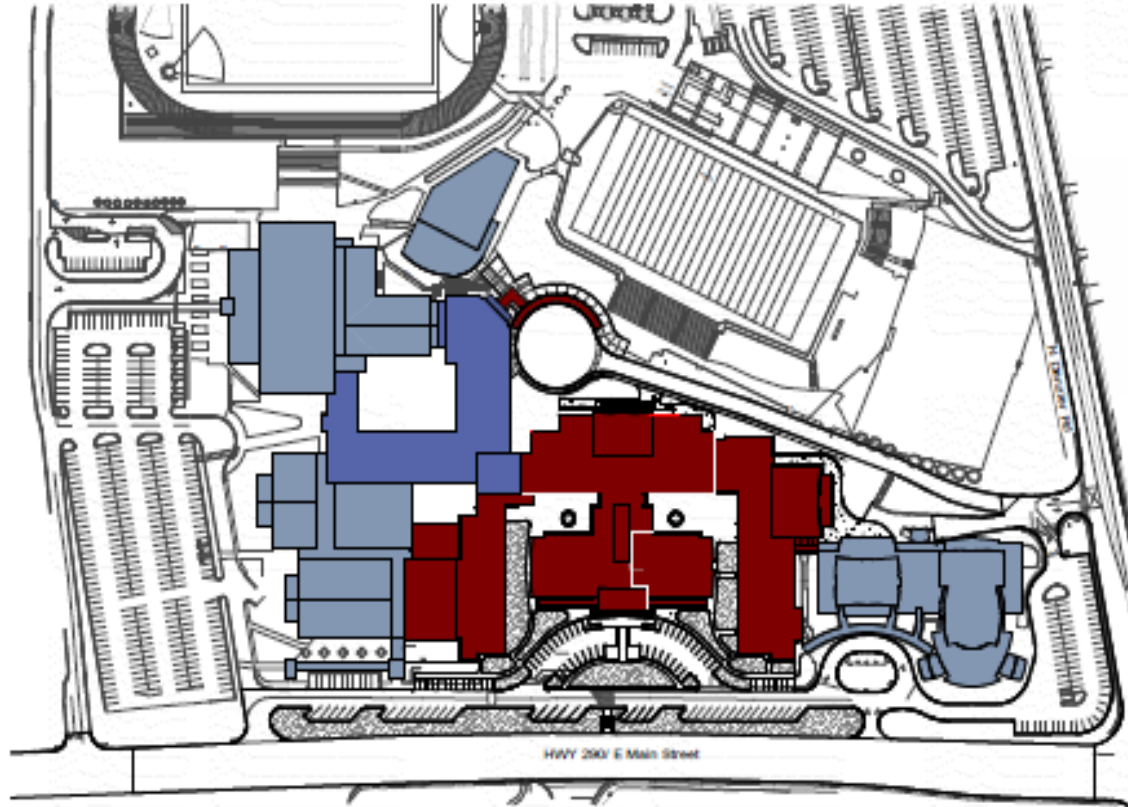
# Byrnes High School Phases 2 & 3



EVERY CHILD, EVERY DAY.



- Existing building to remain
- Existing building Phase 1
- New building Phase 2 & 3



EVERY CHILD, EVERY DAY.



1.1 - South Perspective - View from E Main Street

**EVERY CHILD, EVERY DAY.**





2.1 - North Perspective - View from Football Field

**EVERY CHILD, EVERY DAY.**

# Additional Projects



- Jumbo-Tron replacement
- BFA lacrosse wall
- New Wellford Elementary





# Additional Projects (cont.)



- Resurface Tennis Courts

