



**Facilities Update: October 25, 2021**



# New Elementary School on US 29



EVERY CHILD, EVERY DAY.



MOUNT PLEASANT, SC  
GREENSBORO, NC  
SHEPHERDVILLE, NC  
MOUNTAIN VIEW, NC  
RUMBLESPRING, NC  
SOUTH BRIDGE, NC  
WALKER COTTAGE, NC  
WILKESVILLE, NC  
WINDY HILLS, NC



DATE

**VINEYARD ELEMENTARY SCHOOL**

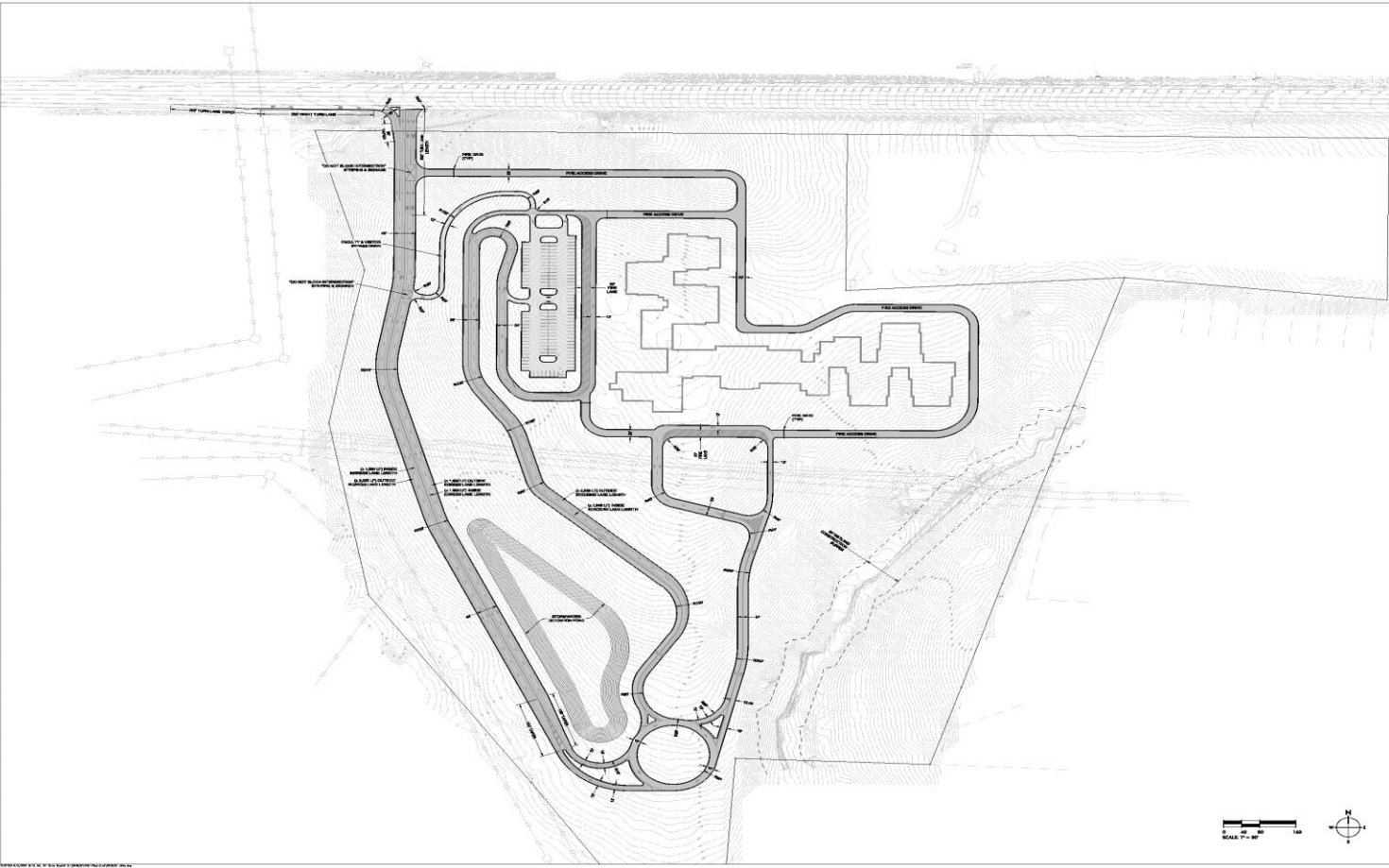
MANASSAS COUNTY, NC

NO. PROJECT: 00000  
DATE: 08/11/2014  
ISSUED BY: [Signature]  
DATE: 08/11/2014  
REVISION HISTORY

NO.	DESCRIPTION	DATE



SCALE 1" = 40'



COPYRIGHT © SEAMON WHITE SIDE ARCHITECTURE, INC.  
801 WINDY HILLS ROAD, SUITE 200, MOUNT PLEASANT, SC 29528 803-887-3333 FAX: 803-887-3334  
THIS DRAWING SHALL NOT BE REPRODUCED OR TRANSMITTED IN ANY FORM OR BY ANY MEANS, ELECTRONIC OR MECHANICAL, WITHOUT PERMISSION.

**EVERY CHILD, EVERY DAY.**



8" CMU WITH METAL STUD/GWB ABOVE 8'-0" (CORRIDORS)  
12" CMU (KITCHEN & GYM)  
EXTERIOR: BRICK VENEER-6" METAL STUD  
6" METAL STUD WITH 5/8" GWB

- ADMINISTRATION
- GUIDANCE
- HEALTH
- PRE-K
- KINDERGARTEN
- 1ST GRADE
- 2ND GRADE
- 3RD GRADE
- 4TH GRADE
- 5TH GRADE
- SPECIAL NEEDS
- SUPPORT CLASSROOM
- TEACHER SUPPORT
- ART
- DINING / PERFORMANCE
- MULTI-MEDIA
- GYM
- KITCHEN
- BUILDING SUPPORT
- CIRCULATION

AP-101 FLOOR PLAN- LEVEL 1

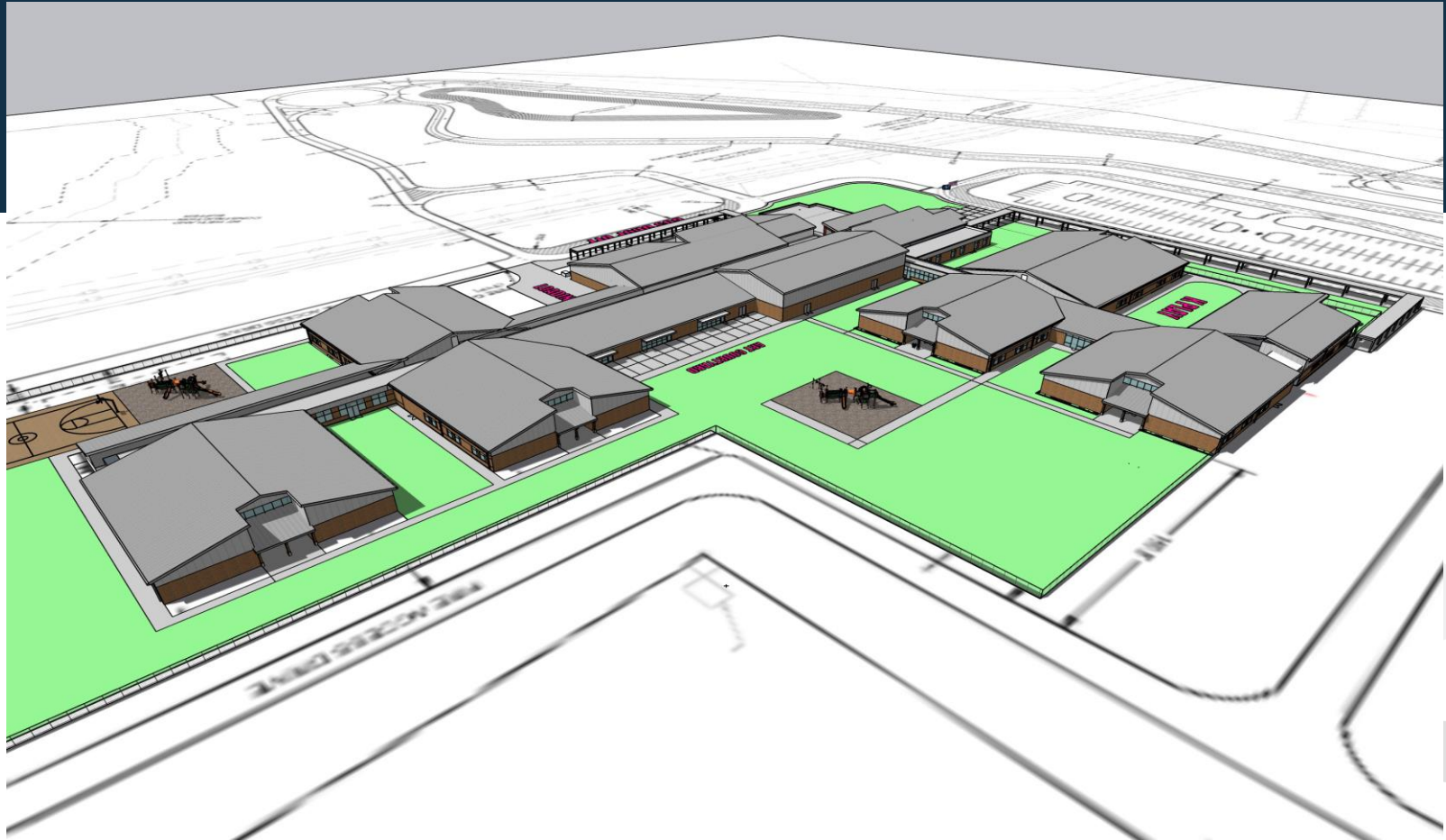




**EVERY CHILD, EVERY DAY.**



**EVERY CHILD, EVERY DAY.**



**EVERY CHILD, EVERY DAY.**



**EVERY CHILD, EVERY DAY.**





**EVERY CHILD, EVERY DAY.**



**EVERY CHILD, EVERY DAY.**



**EVERY CHILD, EVERY DAY.**