



# Facilities Update January 24, 2022



# New Softball Stadium



EVERY CHILD, EVERY DAY.



**EVERY CHILD, EVERY DAY.**



**EVERY CHILD, EVERY DAY.**



**EVERY CHILD, EVERY DAY.**



**EVERY CHILD, EVERY DAY.**



**EVERY CHILD, EVERY DAY.**



**EVERY CHILD, EVERY DAY.**



# Schedule



1. Office of School Facilities Inspection Feb. 8, 2022
2. Occupy after all items addressed





# New BHS Track



EVERY CHILD, EVERY DAY.



**EVERY CHILD, EVERY DAY.**



# Schedule



1. Install by week of Feb. 7, 2022
2. Require 5 days to strip, paint and dry





# New Lacrosse Wall



EVERY CHILD, EVERY DAY.



**EVERY CHILD, EVERY DAY.**



# New Byrnes Cafeteria Furniture



EVERY CHILD, EVERY DAY.



**EVERY CHILD, EVERY DAY.**





EVERY CHILD, EVERY DAY.





**EVERY CHILD, EVERY DAY.**





# New MS on Gin House Rd.



EVERY CHILD, EVERY DAY.



**EVERY CHILD, EVERY DAY.**



**EVERY CHILD, EVERY DAY.**



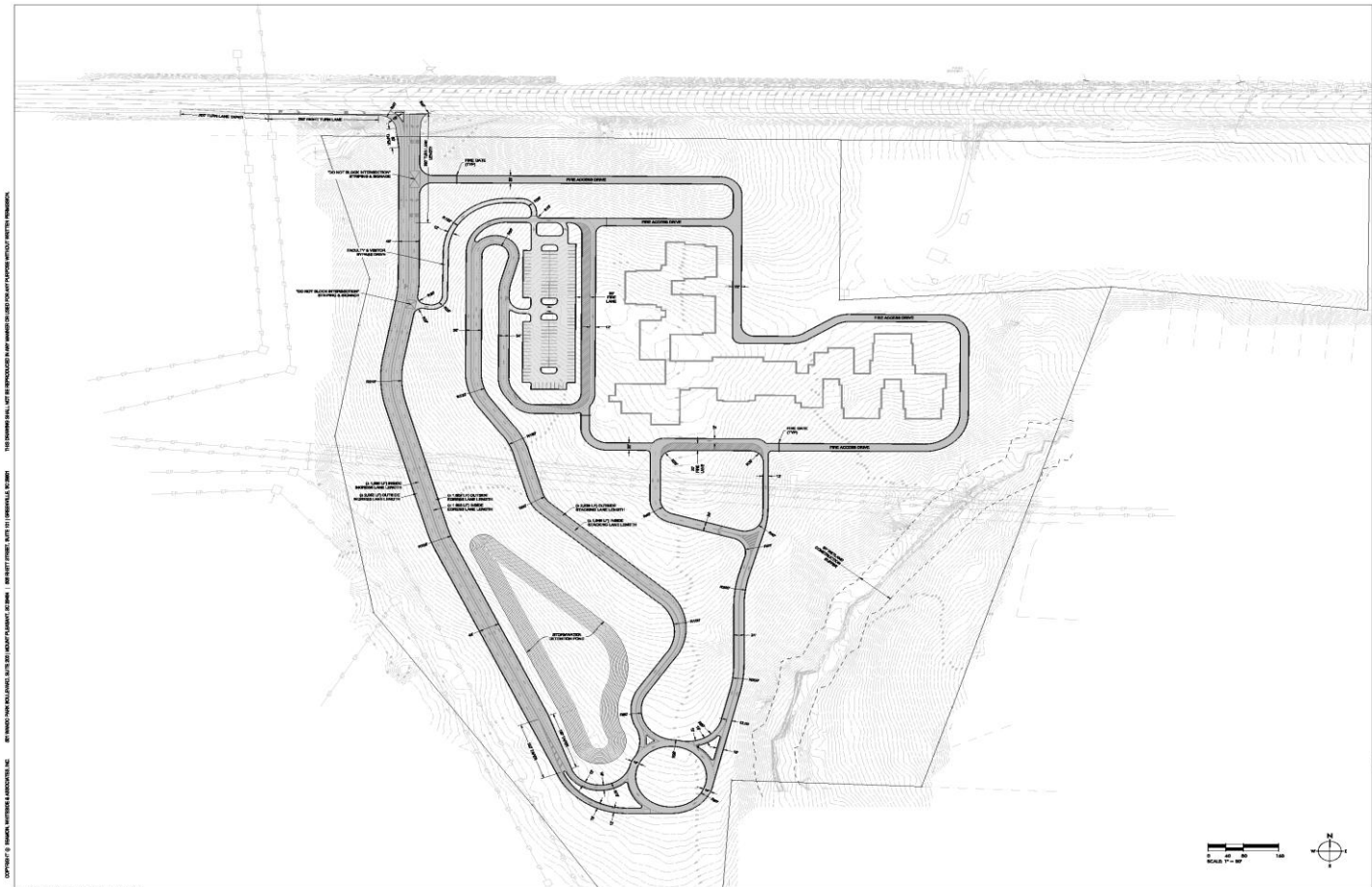
**EVERY CHILD, EVERY DAY.**



# New ES on Highway 29



EVERY CHILD, EVERY DAY.



COPYRIGHT © 2010 SWA GROUP, A HOK COMPANY, CHARLOTTE, NC. ALL RIGHTS RESERVED. THIS DOCUMENT IS NOT TO BE REPRODUCED OR TRANSMITTED IN ANY FORM OR BY ANY MEANS, WITHOUT THE WRITTEN PERMISSION OF SWA GROUP, A HOK COMPANY.



REV.	PROJECT	DATE

DESIGNED BY: [blank]  
CHECKED BY: [blank]  
DATE: [blank]  
REVISION HISTORY:

VINEYARD ELEMENTARY SCHOOL

MANASSAS COUNTY, NC



MOUNTAIN VIEW, NC  
DURHAM, NC  
HUNTSVILLE, NC  
RICHMOND, NC  
SPARTANBURG, NC  
WELLSVILLE, NC  
CHARLOTTE, NC  
WASHINGTON, DC







EVERY CHILD, EVERY DAY.



# Traffic Signal (Pine St./ Hwy 296)



EVERY CHILD, EVERY DAY.



**EVERY CHILD, EVERY DAY.**