

Moving Forward through the Pandemic

Spartanburg Five School Board Presentation
September 28, 2020

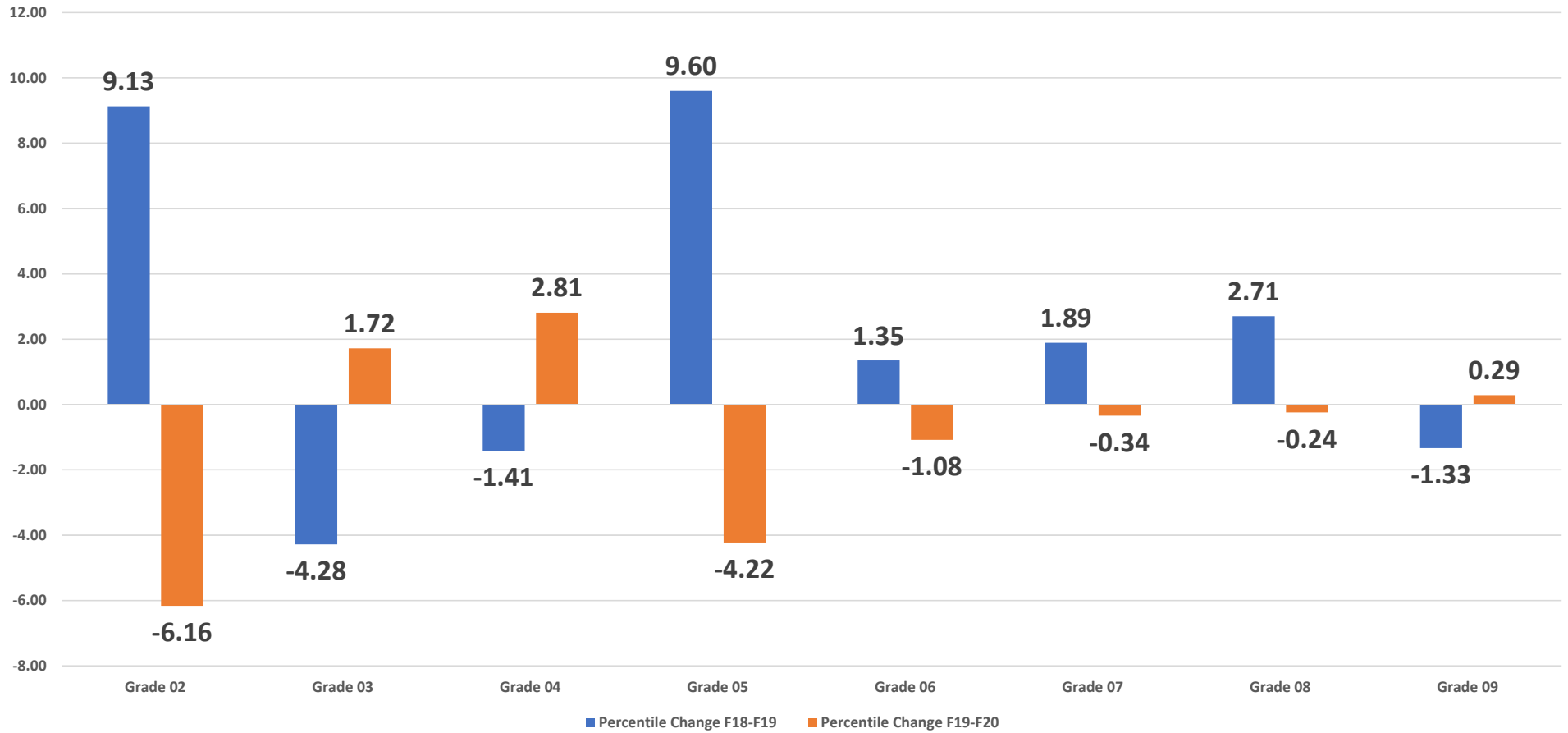
The Question(s)...

- What happened to student learning between March 13 and late August, 2020?
- Did students fall significantly behind?
- Did students hold their own?

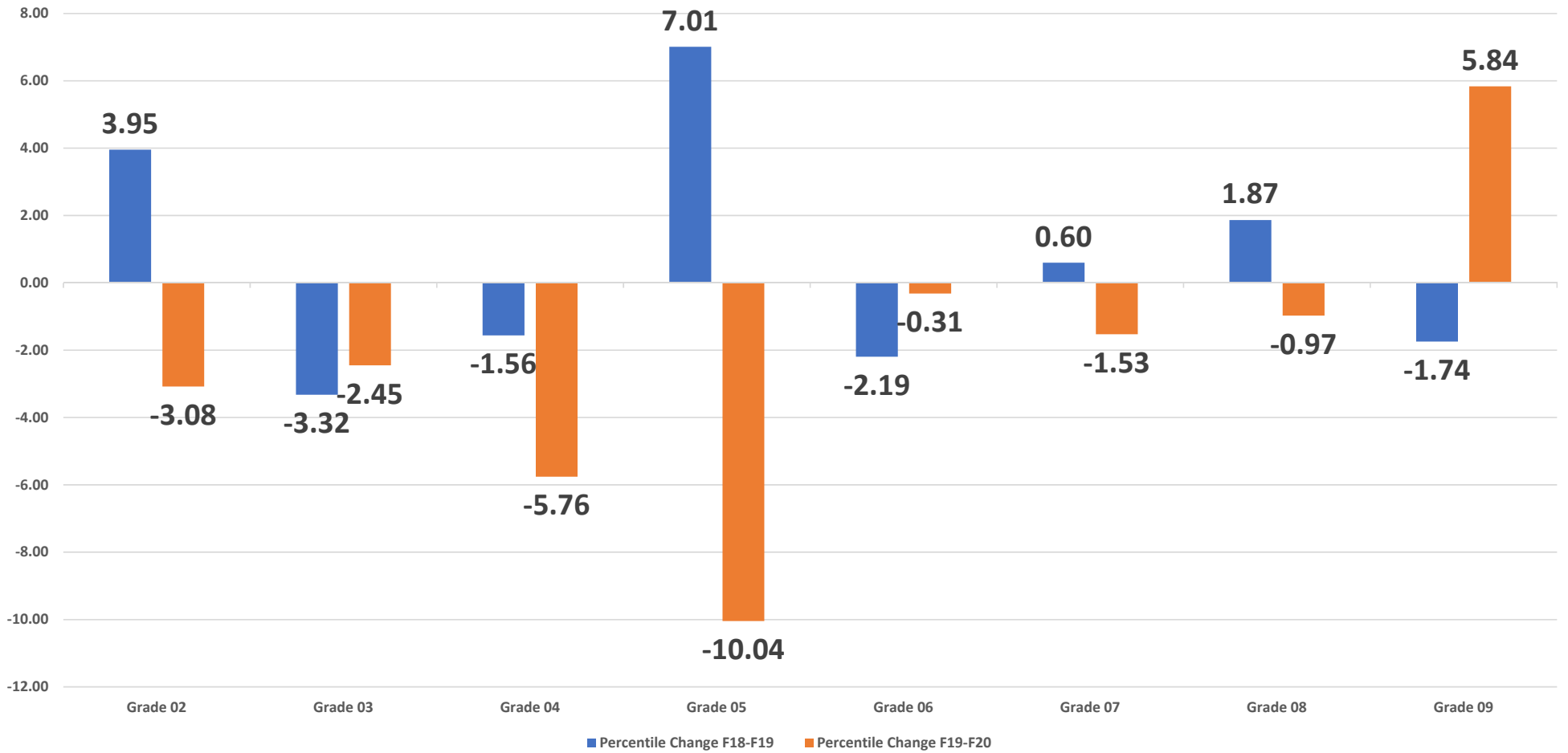
Missing data...

- All testing suspended when schools closed
- Final assessment that we have for 2019-20 is the Mid-Year iReady diagnostic (December 2019)
- Teachers started 2020-21 with little data
- Beginning of Year Diagnostic for 2020-21 became much more important

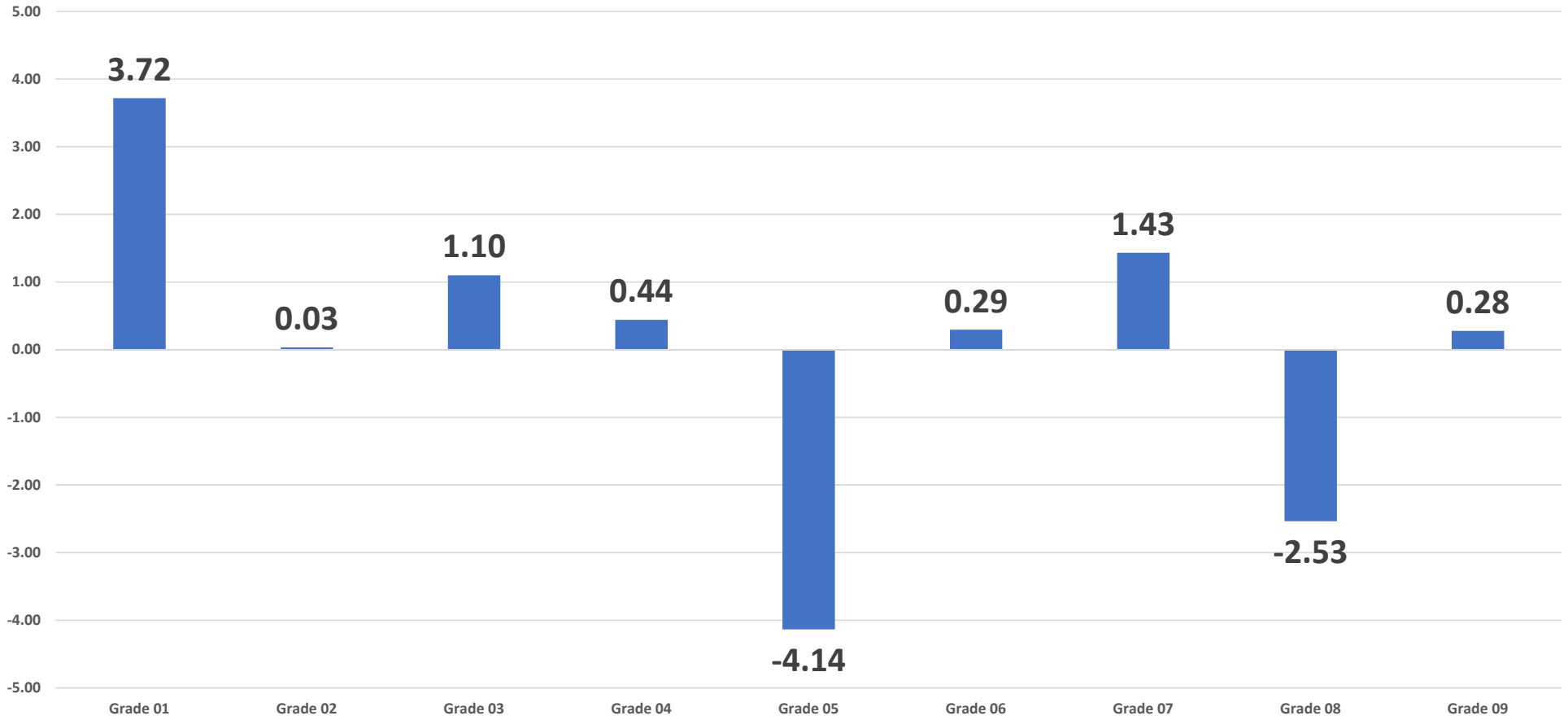
Percentile Change by Grade Level iReady Reading Diagnostic



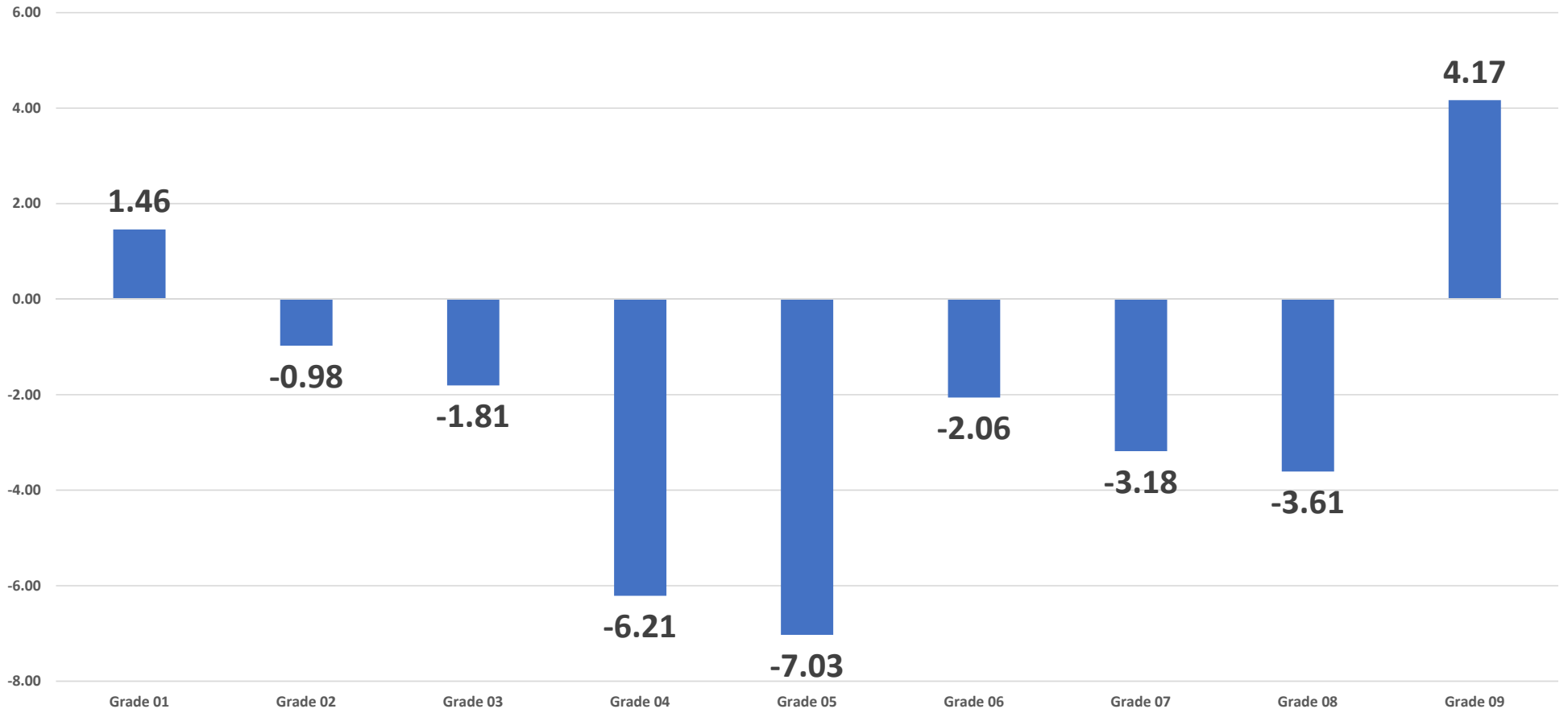
Percentile Change by Grade Level iReady Math Diagnostic



Change in Average Percentile Rank - Reading
iReady Winter 2019 to Fall 2020



Change in Average Percentile Rank - Math
iReady Winter 2019 to Fall 2020



In summary...

- Data suggest many students experienced some level of knowledge loss after school closed in March
- Losses appear to be greater in math vs. reading
- Losses vary by grade level
- Some students gained ground despite the dramatic changes in learning
- Drilling down at the school level will provide direction as to student need

Moving forward...

- iReady diagnostic provides specific, standards-based data to staff (teachers, coaches, interventionists, and administrators) at the student level
- iReady creates a learning path for each individual student based on the most recent diagnostic
- The path is monitored and adjusted by teachers
- Curriculum Associates continues to provide training at the school and district level on data interpretation and best practice
- District Five staff are holding data sessions with school level administration to dive deeper into the specific areas of need at the building level

Moving forward...

- PD provided to staff regarding virtual and hybrid learning models
- Additional PD from Curriculum Associates to utilize new teaching resources to address specific learning gaps identified through iReady data
- Continued emphasis on formative assessment (e.g. F & P) to progress monitor
- Continued job-embedded support at the school level from instructional coaches