

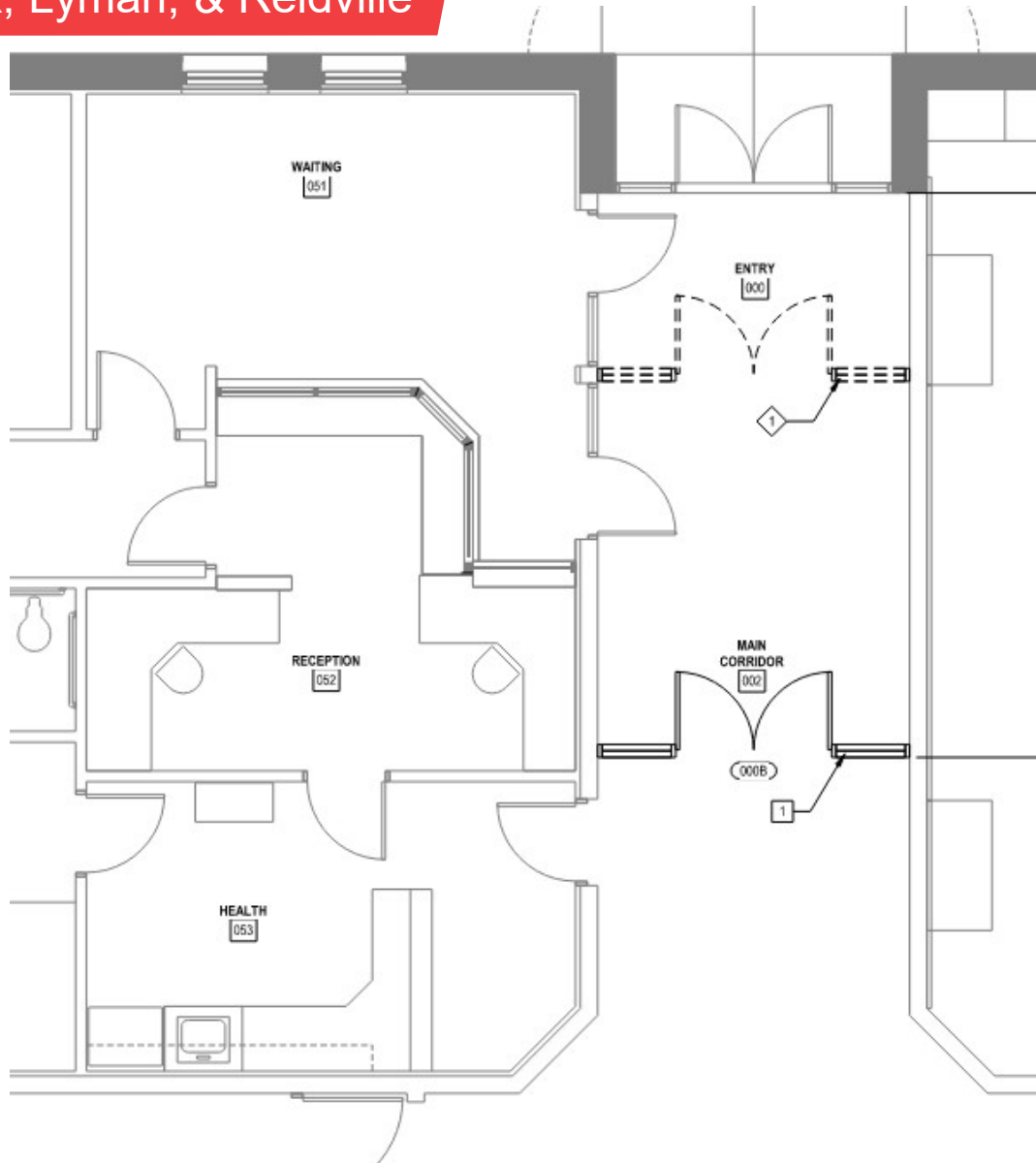


Thompson Turner
Construction

**Consideration for Security Upgrades,
Playcourts, and Accessibility Improvements
Guaranteed Maximum Price**



Security Upgrades Abner Creek, Lyman, & Reidville



Relocate storefront to enlarge vestibule

Replace glass as required to shorten aluminum storefront system under soffit

Repair flooring and paint walls

Add new walk off carpet

Add door release and panic alarm buttons to relocated doors

Playcourts Abner Creek, Lyman, & Reidville



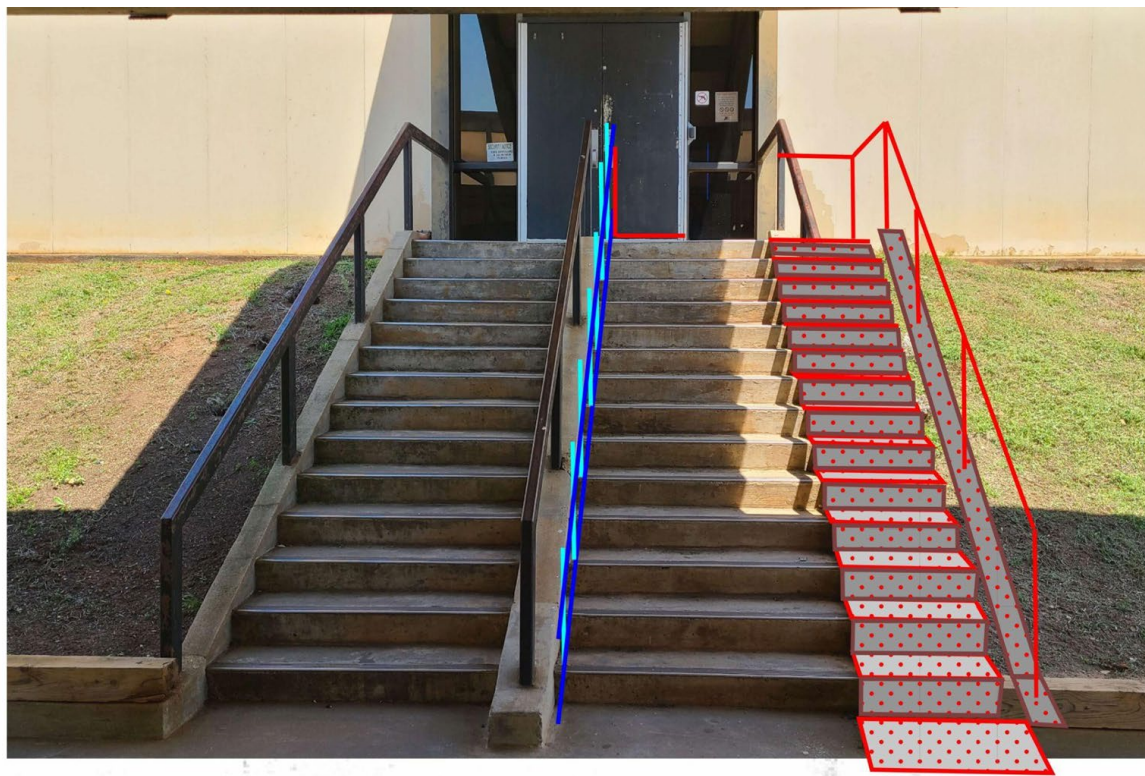
Cut and export 5" of grass & topsoil

Form up 50' x 80' concrete pad

Place and finish 5" thick concrete pad

Ex: Abner Creek Middle School

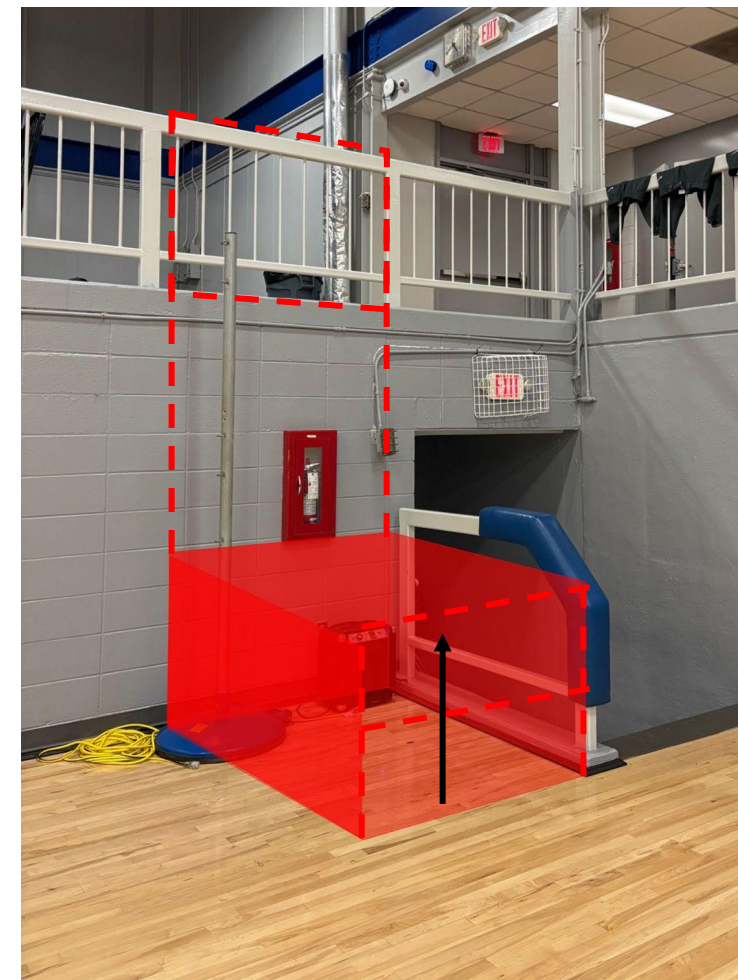
Accessibility Improvements Byrnes Freshman Academy



Exterior Stair Lift



Interior Vertical Lift



Consideration for Security Upgrades, Playcourts, and Accessibility Improvements Guaranteed Maximum Price

Enlarge security vestibules at Abner Creek Academy, Lyman Elementary, and Reidville Elementary to create a secure entrance with the use of weapons detection systems. Construct concrete playcourts for Abner Creek Academy, Lyman Elementary, and Reidville Elementary to provide more area for students to play. Improve accessibility to the gymnasium at the Byrnes Freshman Academy with the installation of an exterior wheelchair lift and an interior vertical lift.

GUARANTEED MAXIMUM PRICE PRESENTATION TO THE BOARD OF TRUSTEES	
Security Upgrades	\$67,583
Playcourts	\$116,203
Accessibility Improvements	\$173,392
Site Utility & Access Control Allowance	\$40,000
Construction Contingency	18,365
GMP TOTAL	\$415,542

