



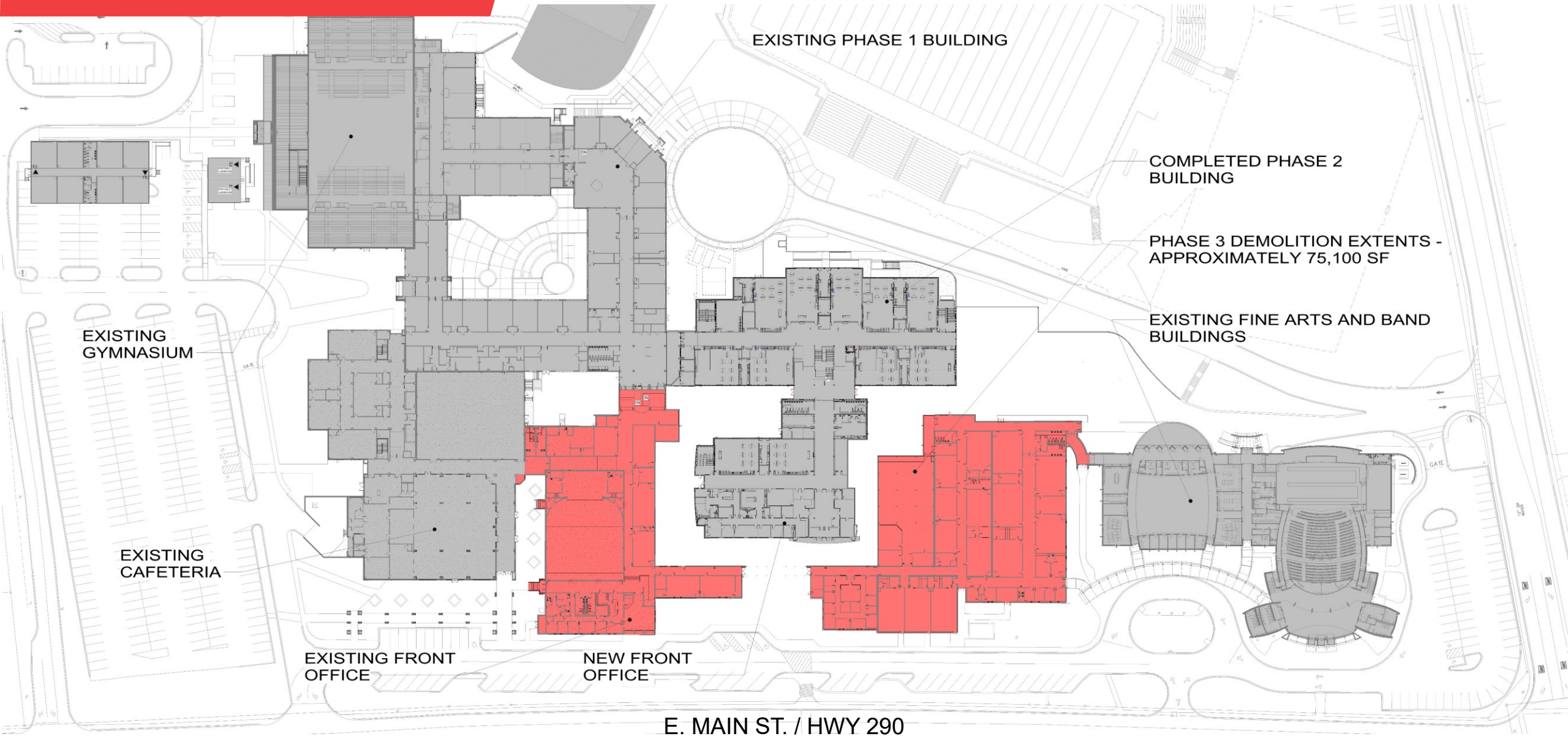
**mcmillan  
pazdan  
smith**  
ARCHITECTURE



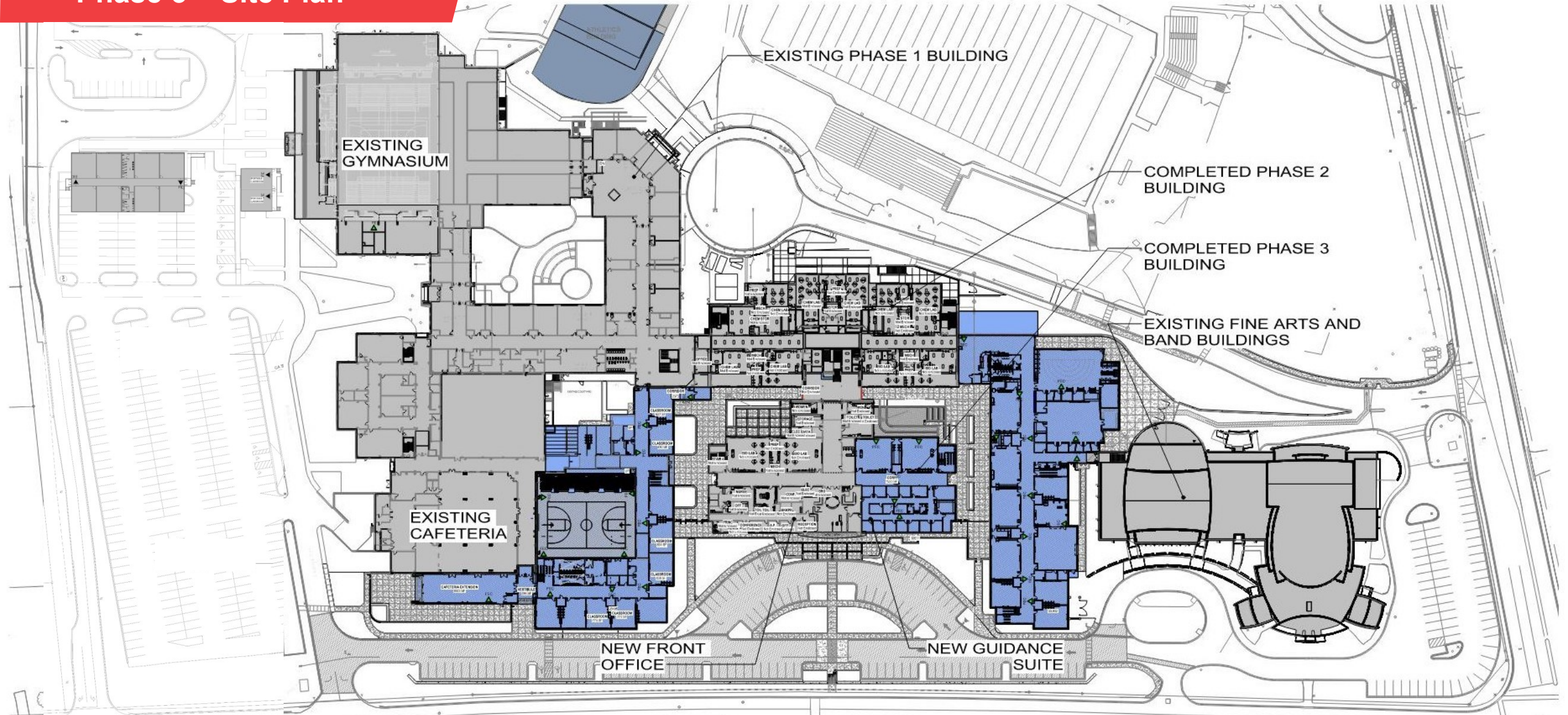
**Byrnes High School Phase 3 Building GMP**



# Phase 3 Demolition Plan



# Phase 3 – Site Plan

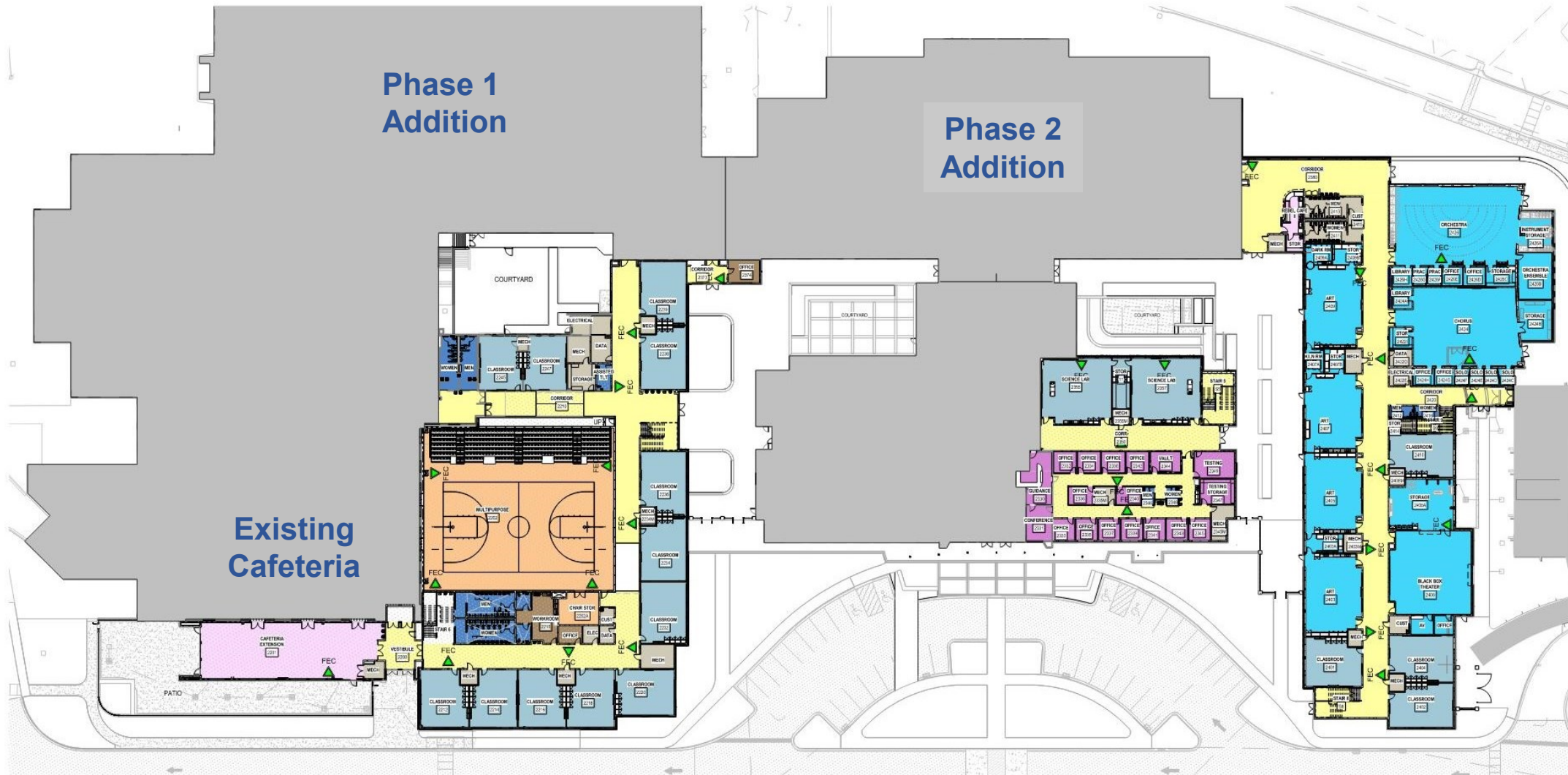


E. MAIN ST. / HWY 290

# Phase 3 – 1100 Level

## PLAN LEGEND

- ACADEMIC
- ADMINISTRATION
- CIRCULATION
- FINE & PERFORMING ARTS
- MEDIA CENTER
- MEDIA TECHNOLOGY
- MULT-PURPOSE
- RESTROOMS
- SUPPORT



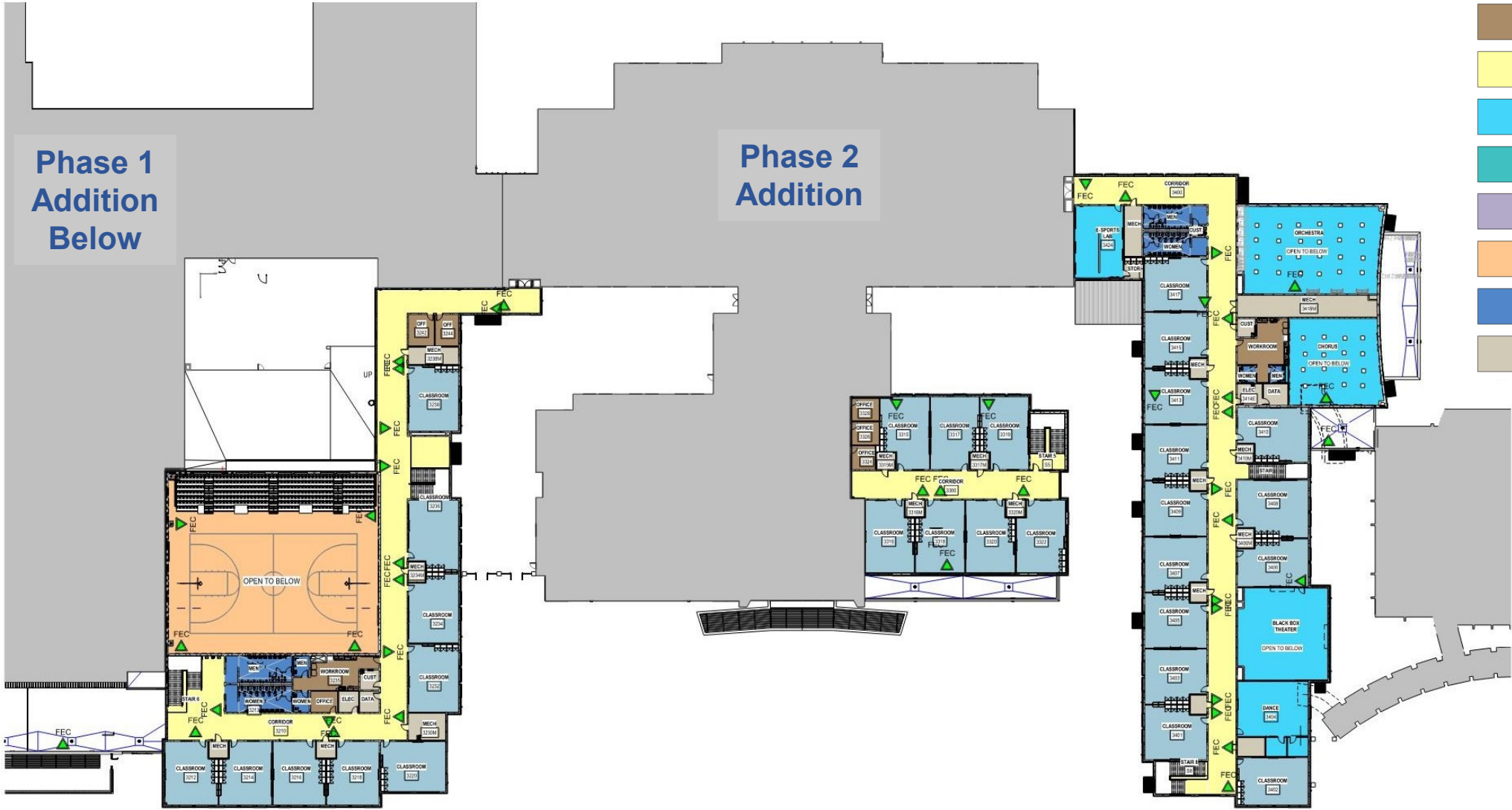
# Phase 3 – 1200 Level

## PLAN LEGEND

- ACADEMIC
- ADMINISTRATION
- CIRCULATION
- FINE & PERFORMING ARTS
- MEDIA CENTER
- MEDIA TECHNOLOGY
- MULT-PURPOSE
- RESTROOMS
- SUPPORT

Phase 1  
Addition  
Below

Phase 2  
Addition



Renderings



James F. Byrnes High School



Front Entrance

Renderings



James F. Byrnes High School



Building Rear

## Byrnes High School Phase 3 Building GMP

Construct a two-story building with 45 classrooms, 2 science labs, performing & fine arts classrooms, black box theater, guidance suite, multipurpose gym, cafeteria extension and site work including a new front drive and parking.

GUARANTEED MAXIMUM PRICE PRESENTATION TO THE BOARD OF TRUSTEES	
Site Work & Building	\$45,774,672.41
Contingency	\$1,935,529.03
<b>GMP TOTAL</b>	<b>\$47,710,201.44</b>



