



**mcmillan
pazdan
smith**
ARCHITECTURE

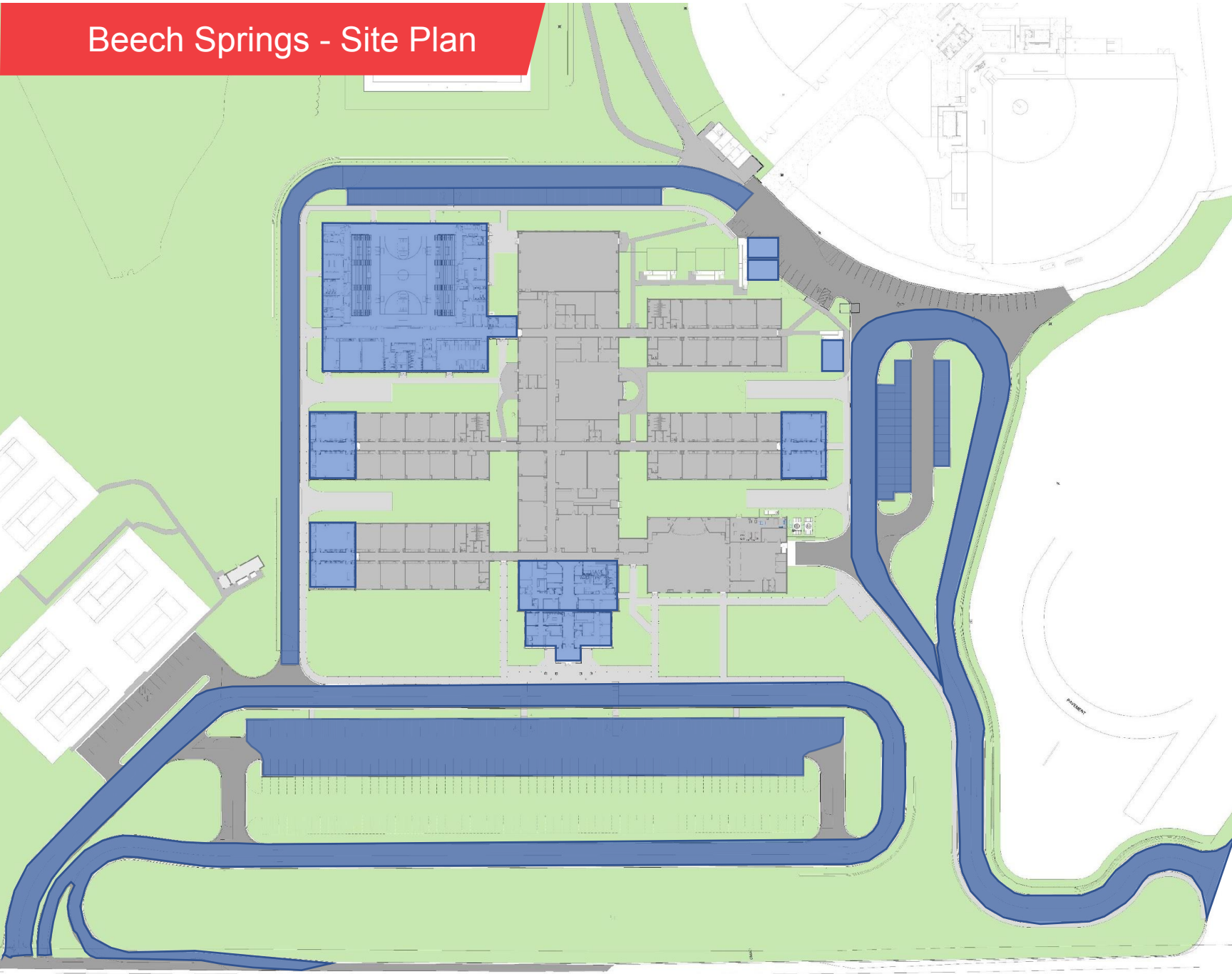


Thompson Turner
Construction

Beech Springs Intermediate School Conversion



Beech Springs - Site Plan



Approximately 44,300sf of New Construction area

Approximately 5,800sf of Renovated area

New Parent Car Loop

New Bus Loop

New Parking Lots (60 added spaces)
(130 Future Spaces available)

New Fire Truck Access Lane

(3) New Classroom Portable Buildings

Beech Springs - Floor Plan

Competition
Gym and
Locker Rooms

(3) Portable
Classroom Utility
Connections

(2) Science
Lab Addition

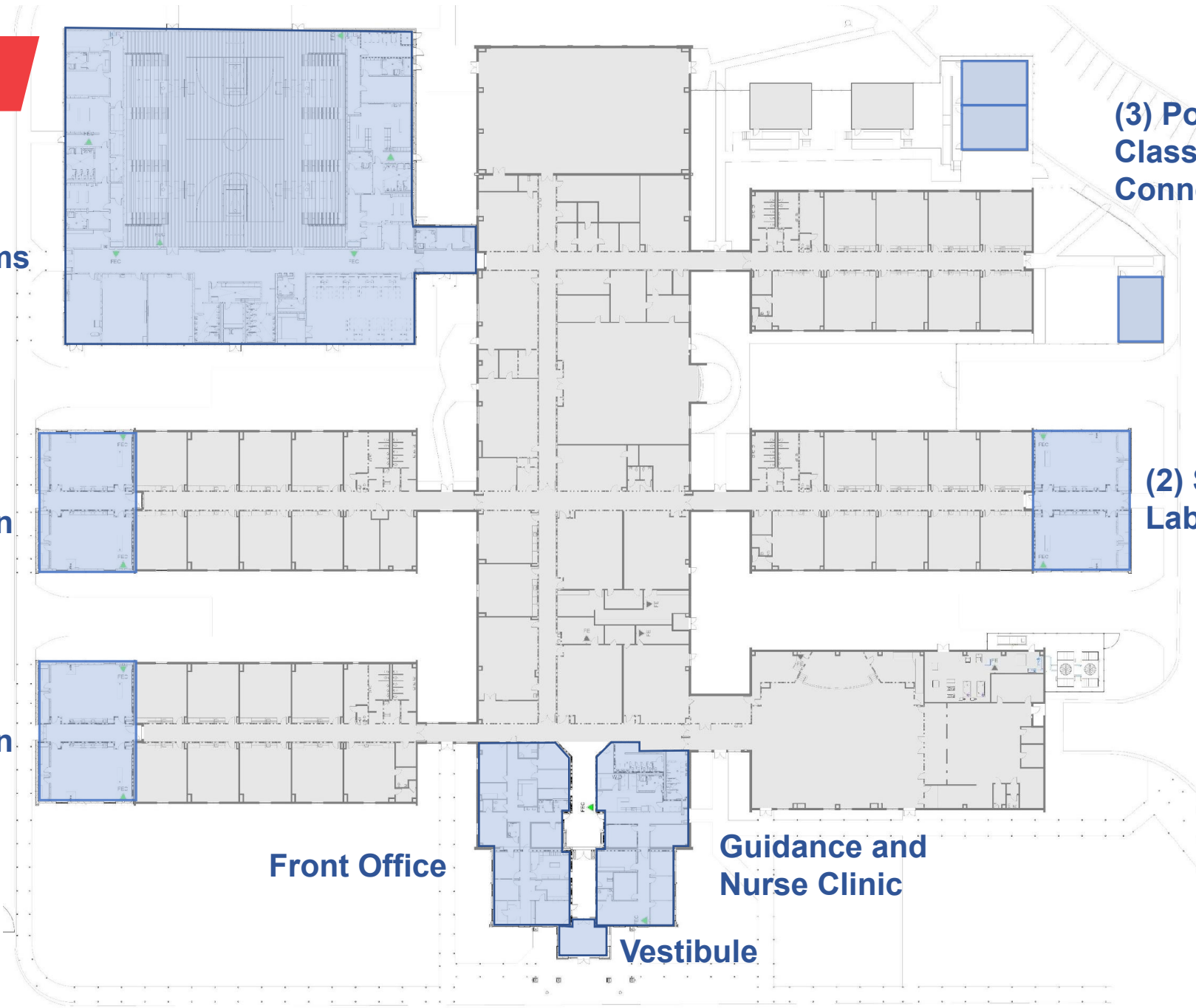
(2) Science
Lab Addition

(2) Science
Lab Addition

Front Office

Guidance and
Nurse Clinic

Vestibule



Beech Springs - GMP

Beech Springs Intermediate School Conversion

Construct six science labs, competition gym with locker rooms, and front office/guidance; renovate existing front office; expand and replace entry canopies; new SCDOT turn lanes; new parent drop-off loop; new bus drop off loop; new fire lane; new parking lots; football field modifications; modular connections.

GUARANTEED MAXIMUM PRICE PRESENTATION TO THE BOARD OF TRUSTEES

Site	\$7,327,371
Building	\$20,737,135
Modular	\$147,486
GMP TOTAL	\$28,211,992

(GMP includes 3% Building Contingency of \$774,093
and 2% Site Contingency of \$505,943)





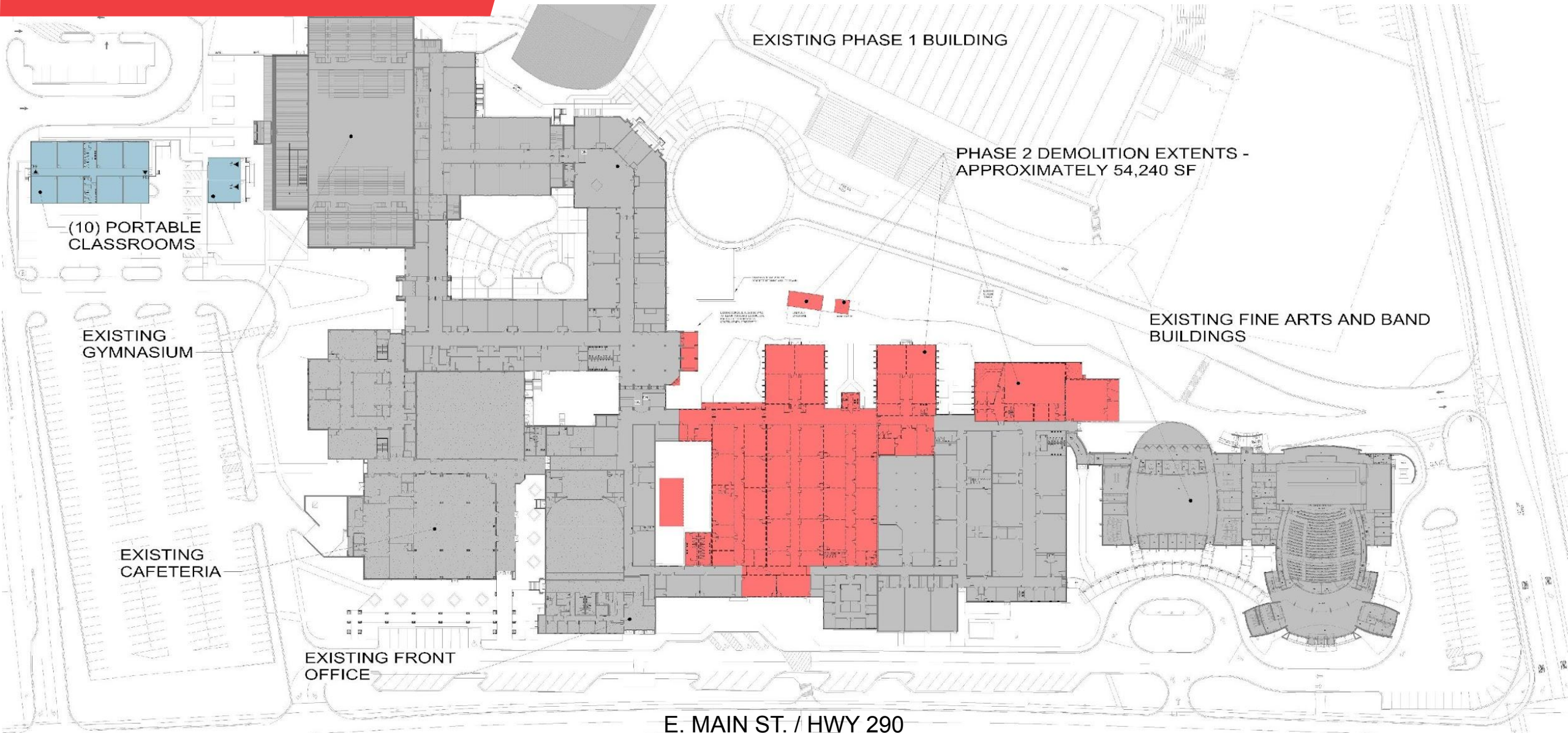
**mcmillan
pazdan
smith**
ARCHITECTURE



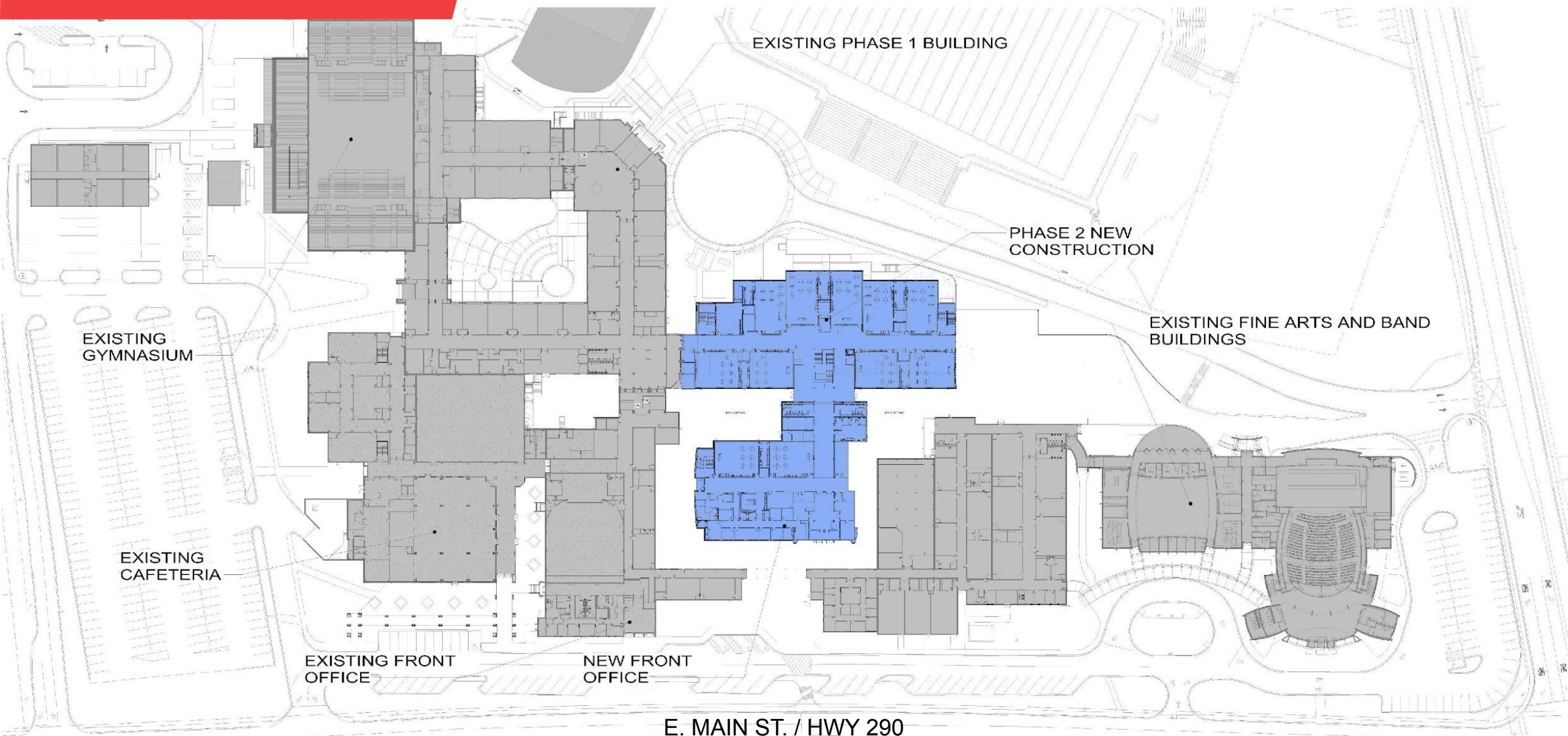
**Byrnes High School Phase 2
Sitework GMP**



Phase 2 Demolition Plan



Phase 2 – Site Plan



Byrnes High School Phase 2
Sitework GMP

Site demolition, soil nail wall demolition, mass excavation and backfill for new addition, new water lines, new sanitary sewer manholes and piping, new storm sewer manholes and piping, and erosion control measures

GUARANTEED MAXIMUM PRICE PRESENTATION TO THE BOARD OF TRUSTEES	
Sitework Utilities & Grading	\$1,241,195
Site Allowance	\$100,000
GMP TOTAL	\$1,341,195



Renderings



James F. Byrnes High School



Front Entrance after Phase 3

Renderings

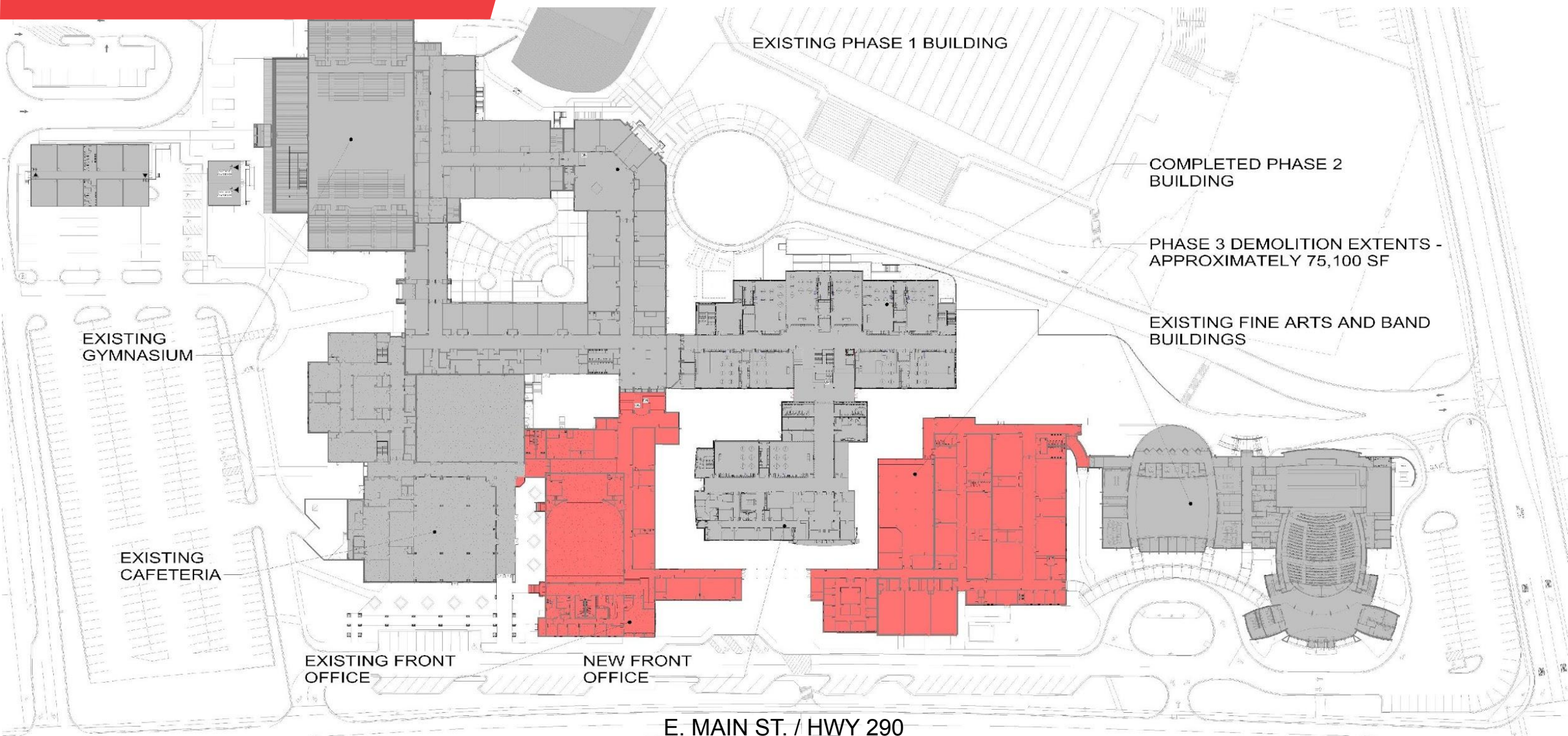


James F. Byrnes High School



Building Rear after Phase 3

Phase 3 Demolition Plan



Phase 3 – Site Plan

