

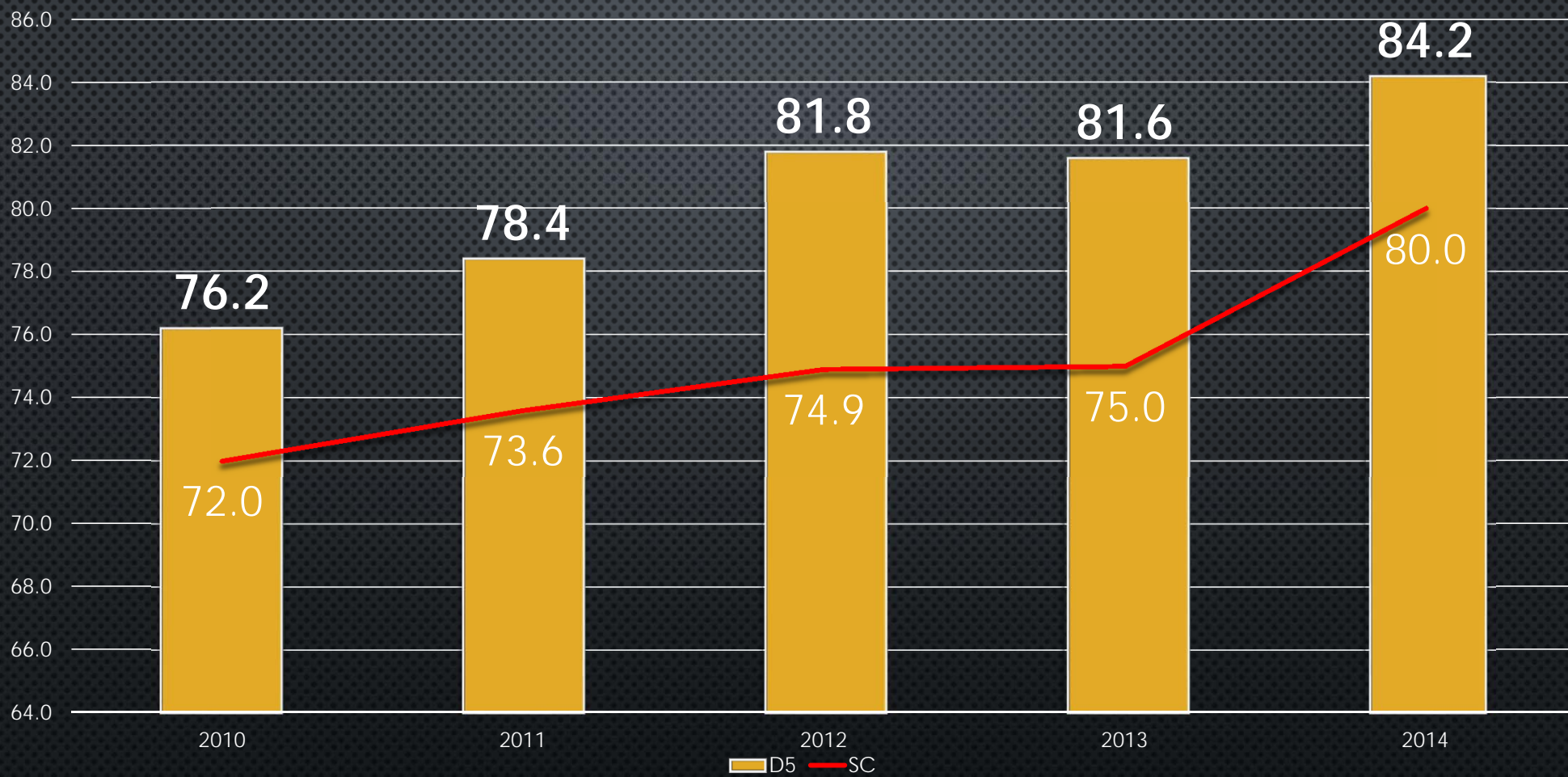
2013-14 SECONDARY REPORT

JANUARY 26, 2015

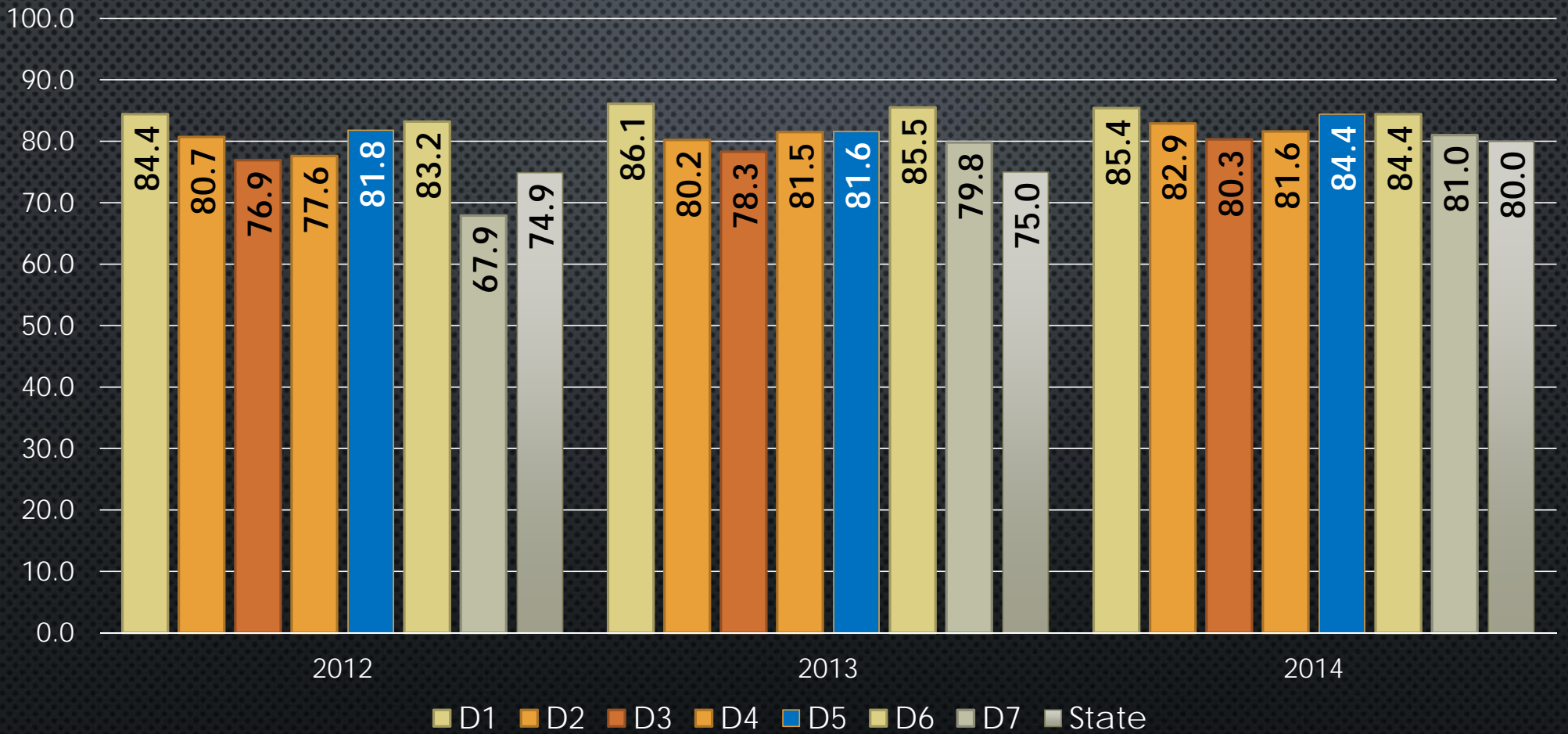
GRADUATION RATE

- BHS GRADUATION RATE CONTINUES TO STEADILY INCREASE
- RATE CONTINUES TO BE ABOVE THE STATE AVERAGE
- CONTINUES TO GROW AMONG AREA DISTRICTS (TIED FOR 2ND IN 2014)
- ACTIONS
 - ACCURATE RECORDKEEPING
 - PROGRAMS IN PLACE TO ALLOW STUDENTS TO EARN DIPLOMA

Graduation Rate - BHS and SC



District Graduation Rates - Spartanburg County 2012-2014



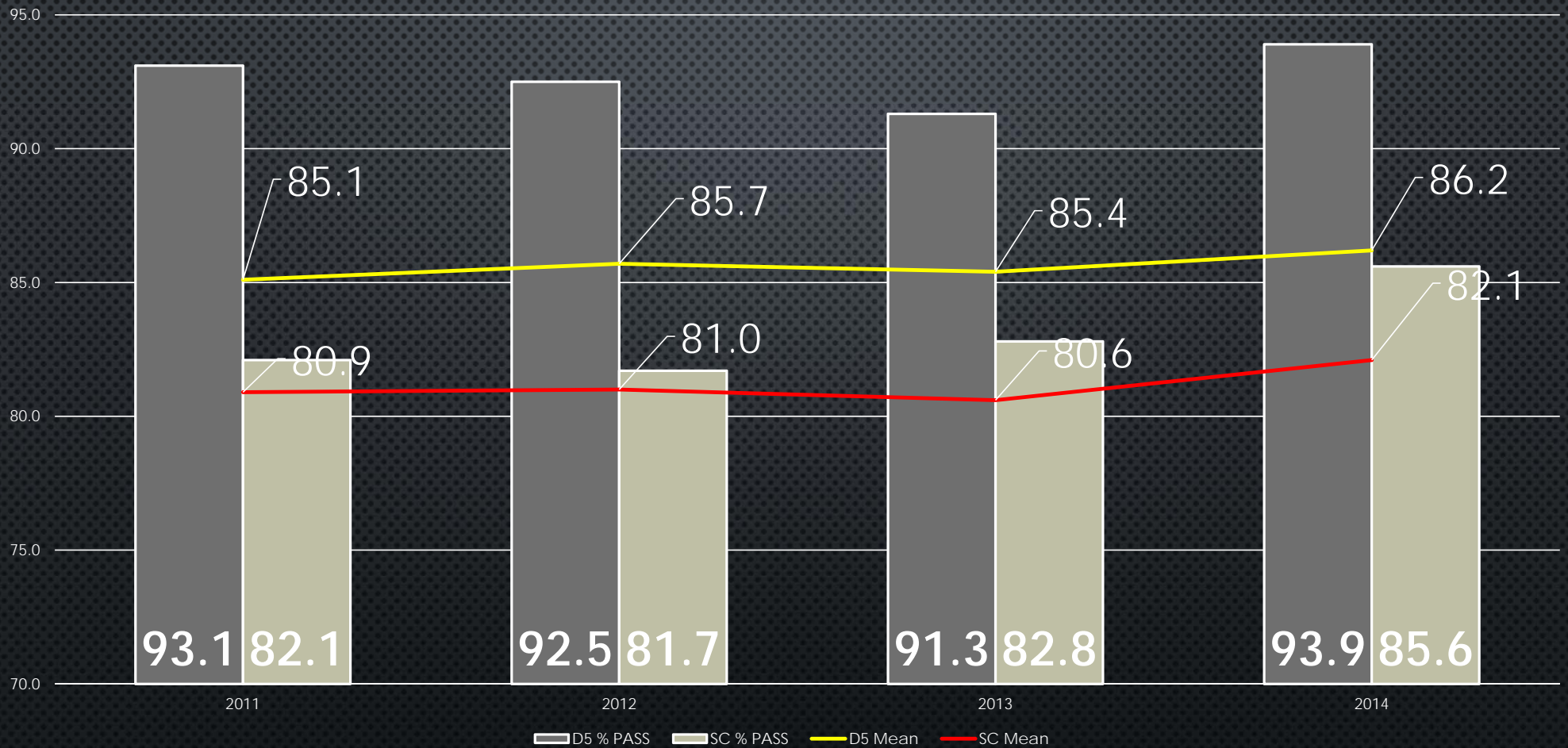
END-OF-COURSE DATA

- DISTRICT CELEBRATING A RECORD YEAR FOR EOC PERFORMANCE
- PERCENTAGE OF STUDENTS PASSING EACH EXAM IS AT AN ALL-TIME-HIGH
- MEAN SCORE IS AT AN ALL TIME HIGH IN 3 OF 4 SUBJECTS

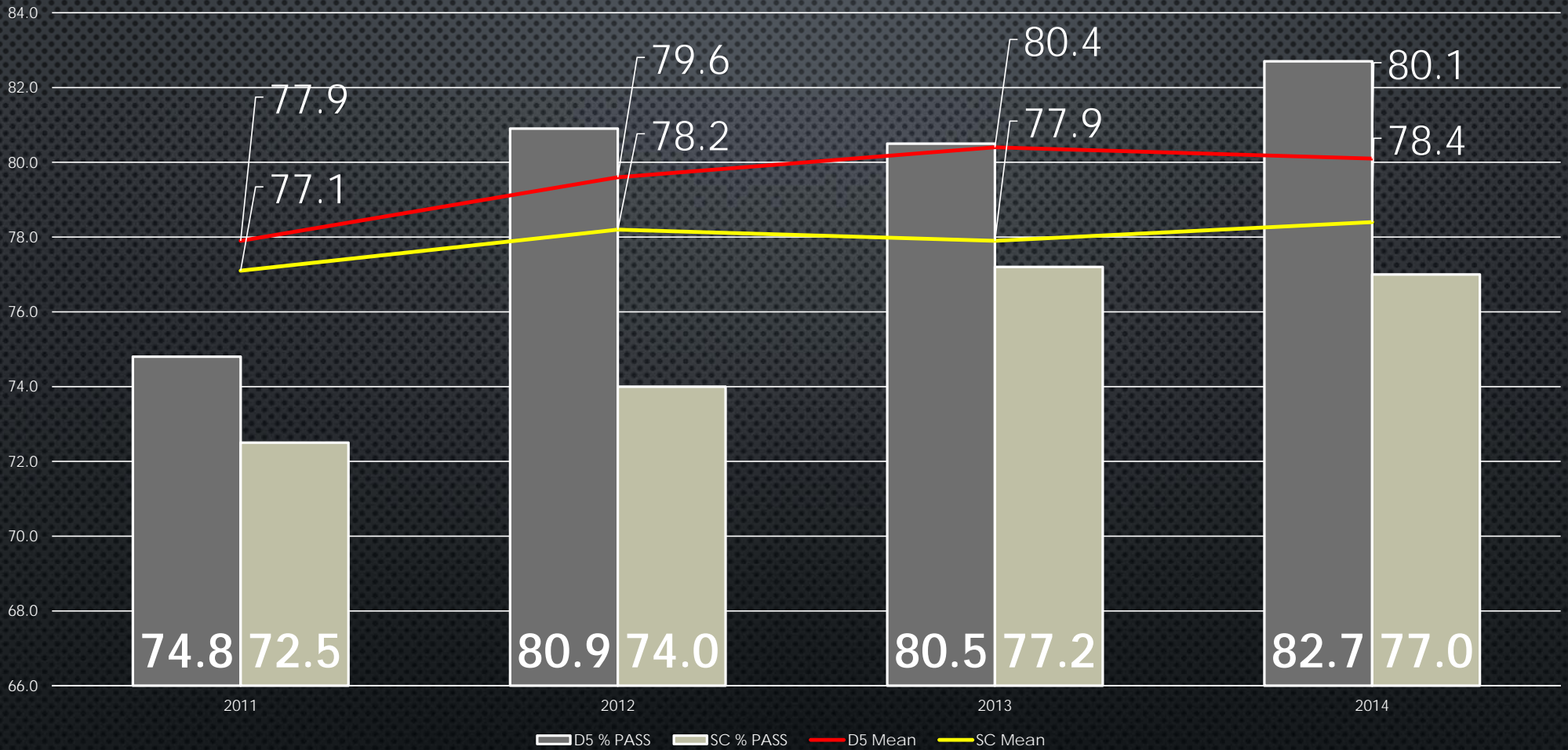
EOCEP 2011-2014 Percent Passing each Exam



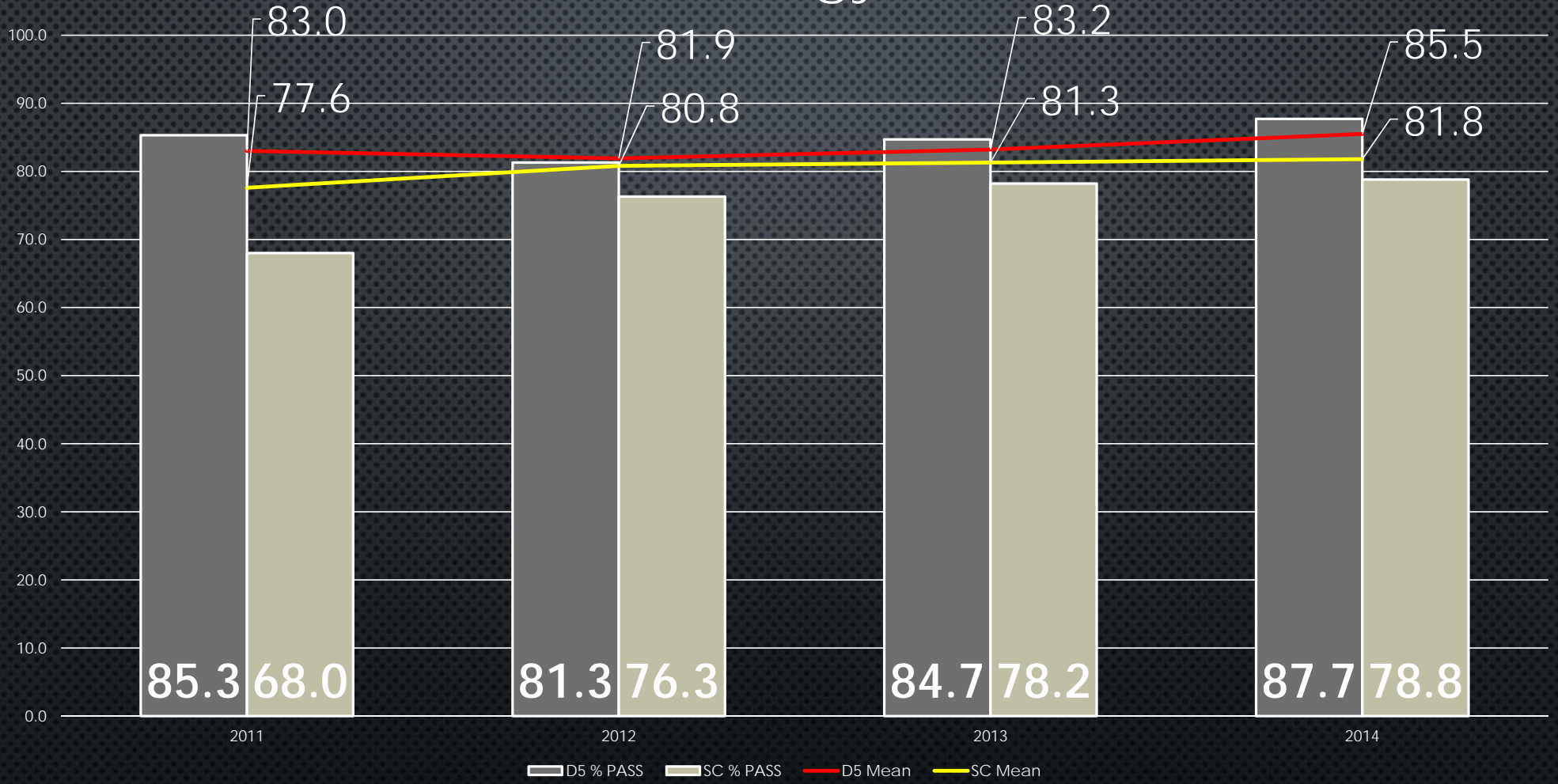
Algebra I/Math Tech II



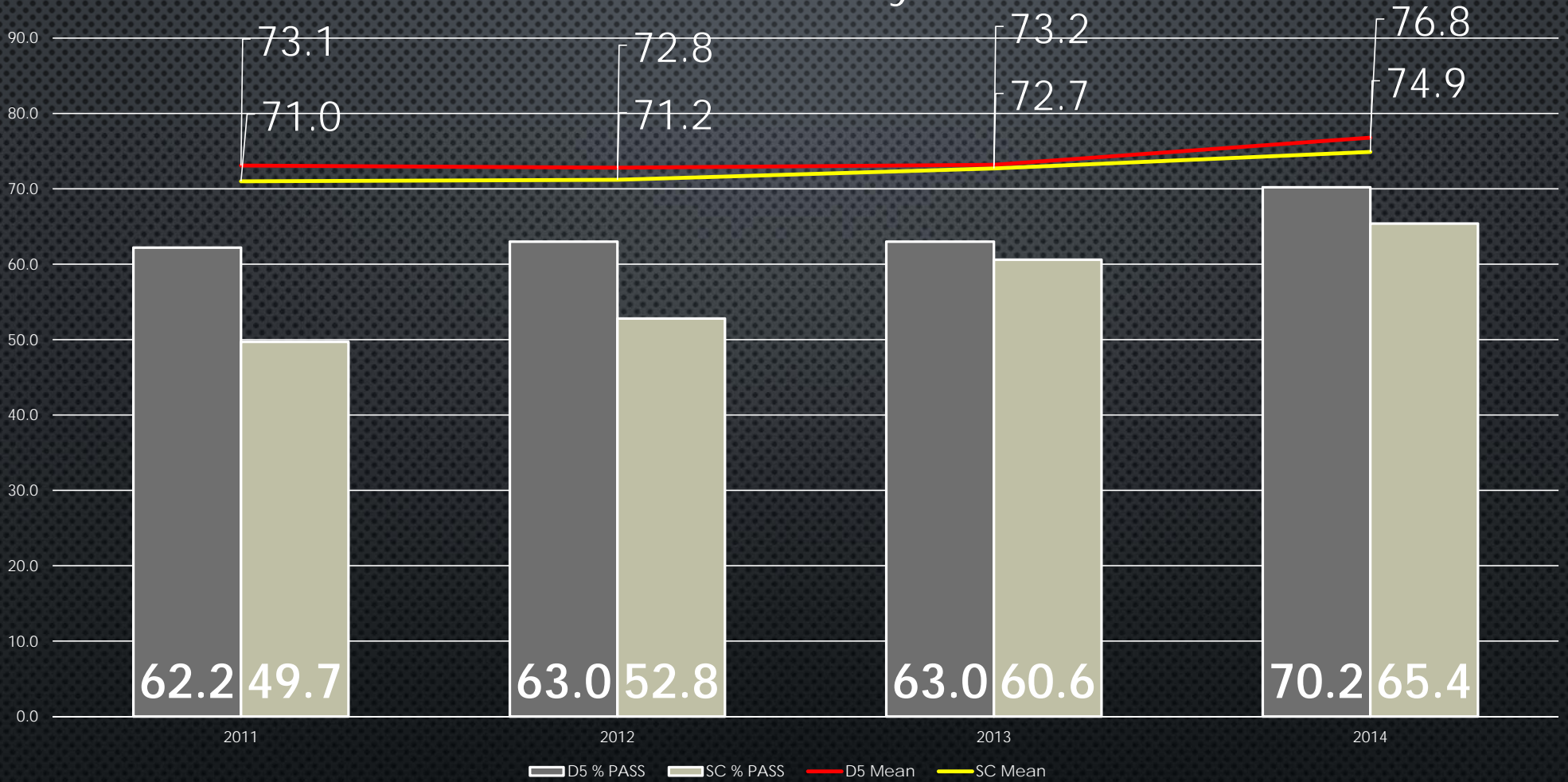
English I



Biology

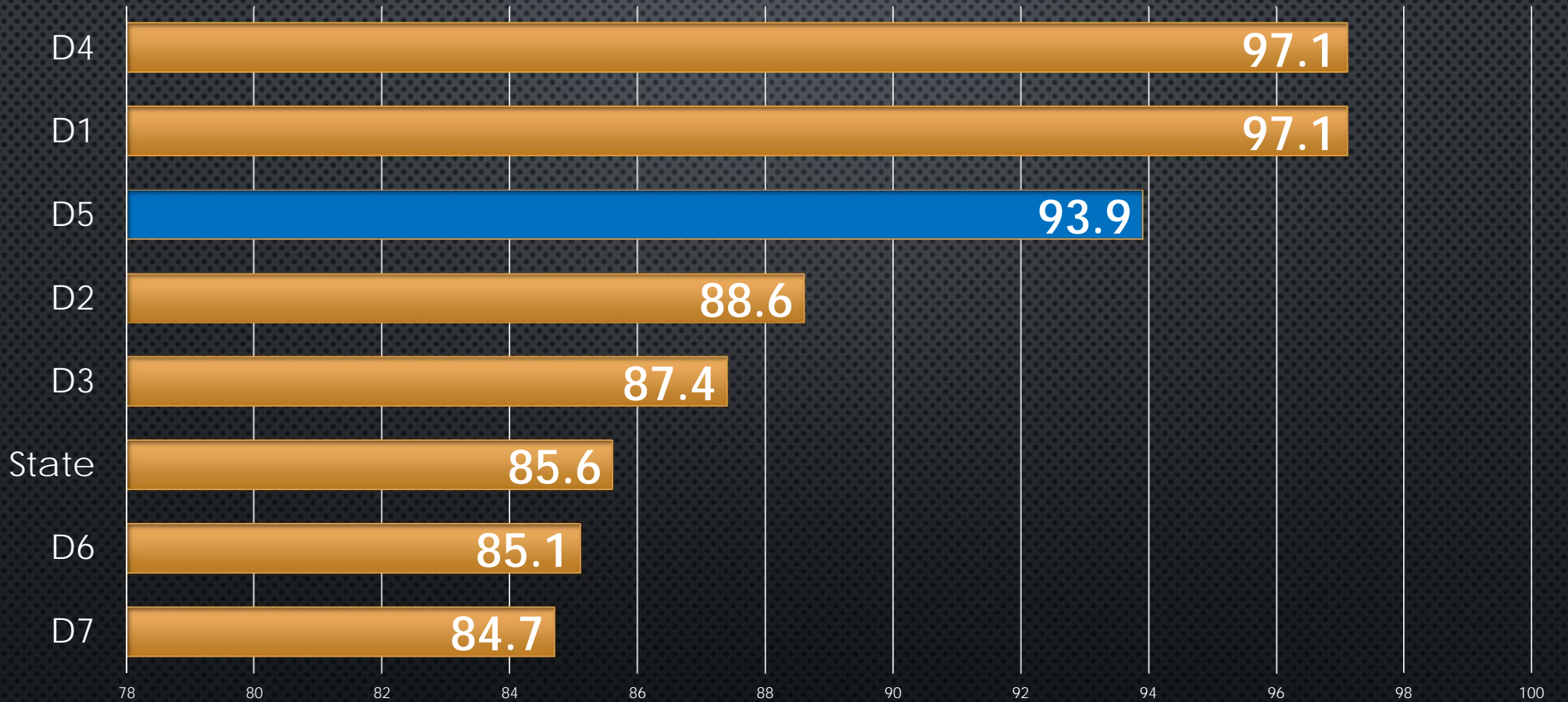


US History



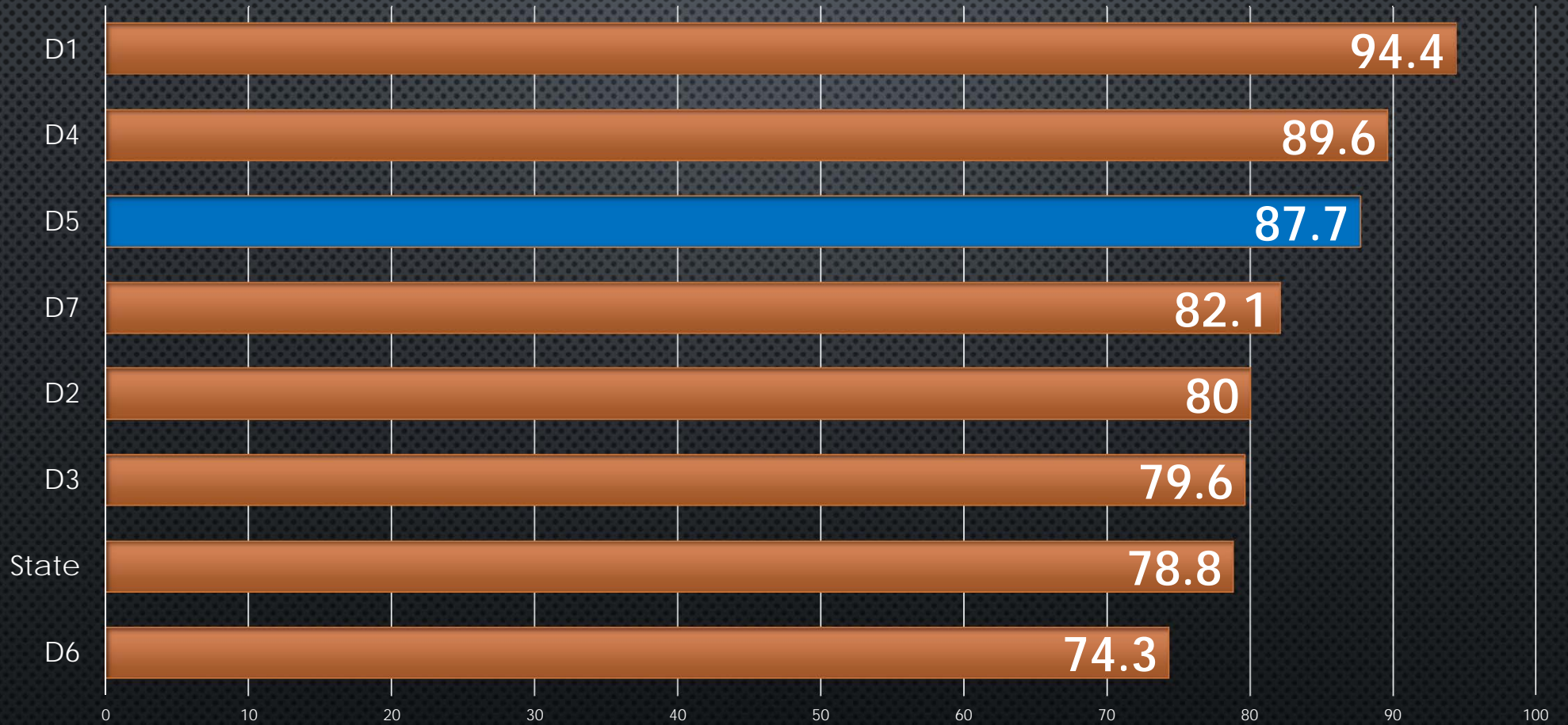
End-of-Course by District (Percentage Passing)

Algebra I



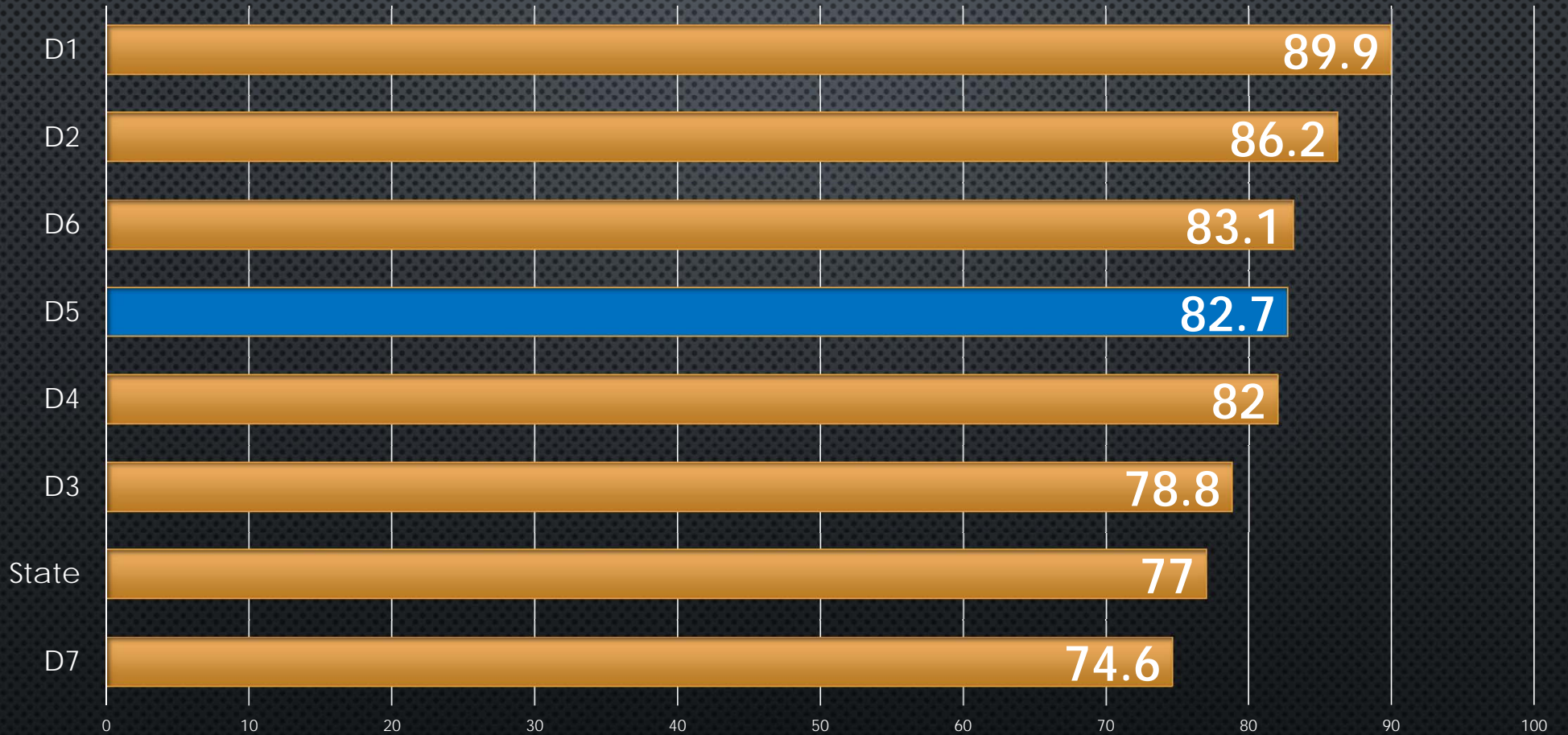
End-of-Course by District (Percentage Passing)

Biology



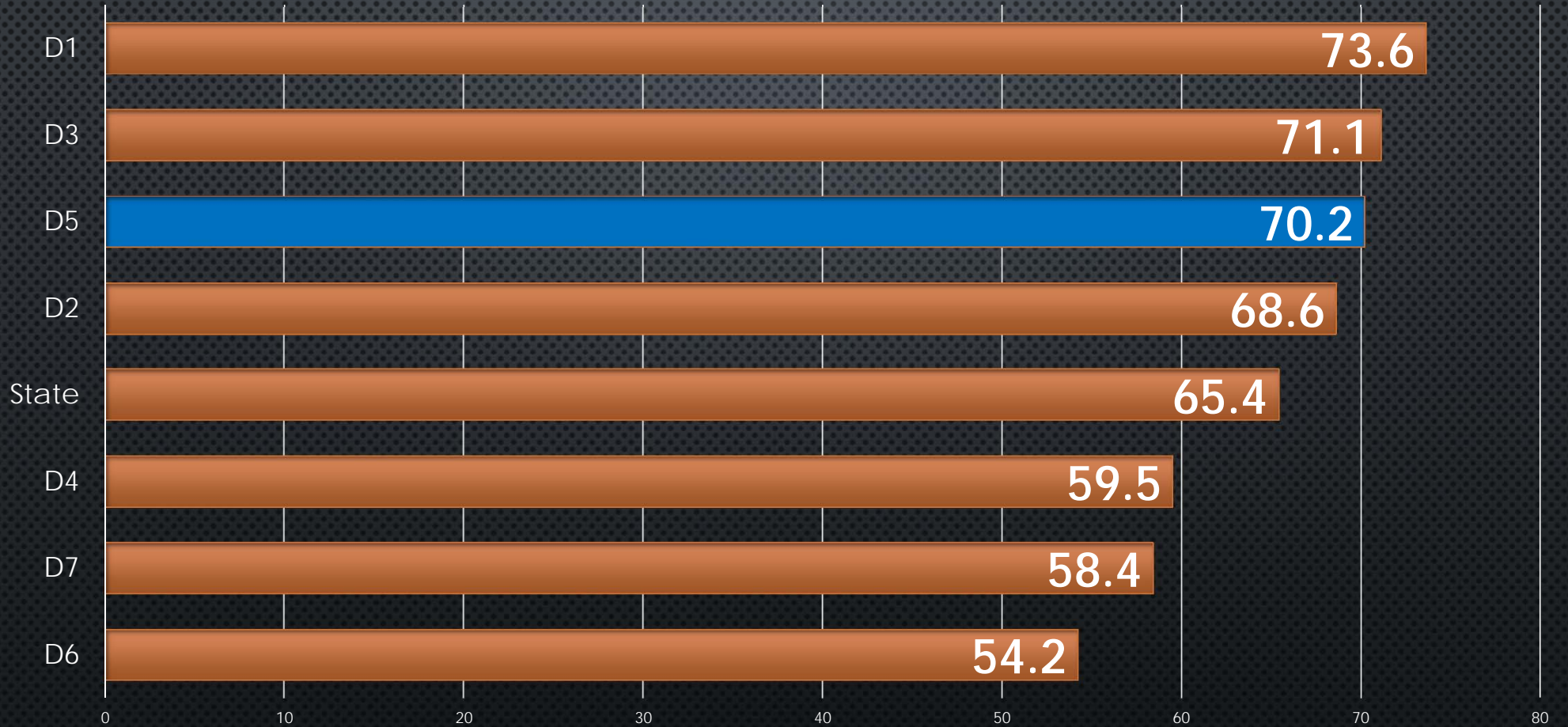
End-of-Course by District (Percentage Passing)

English I



End-of-Course by District (Percentage Passing)

U.S. History

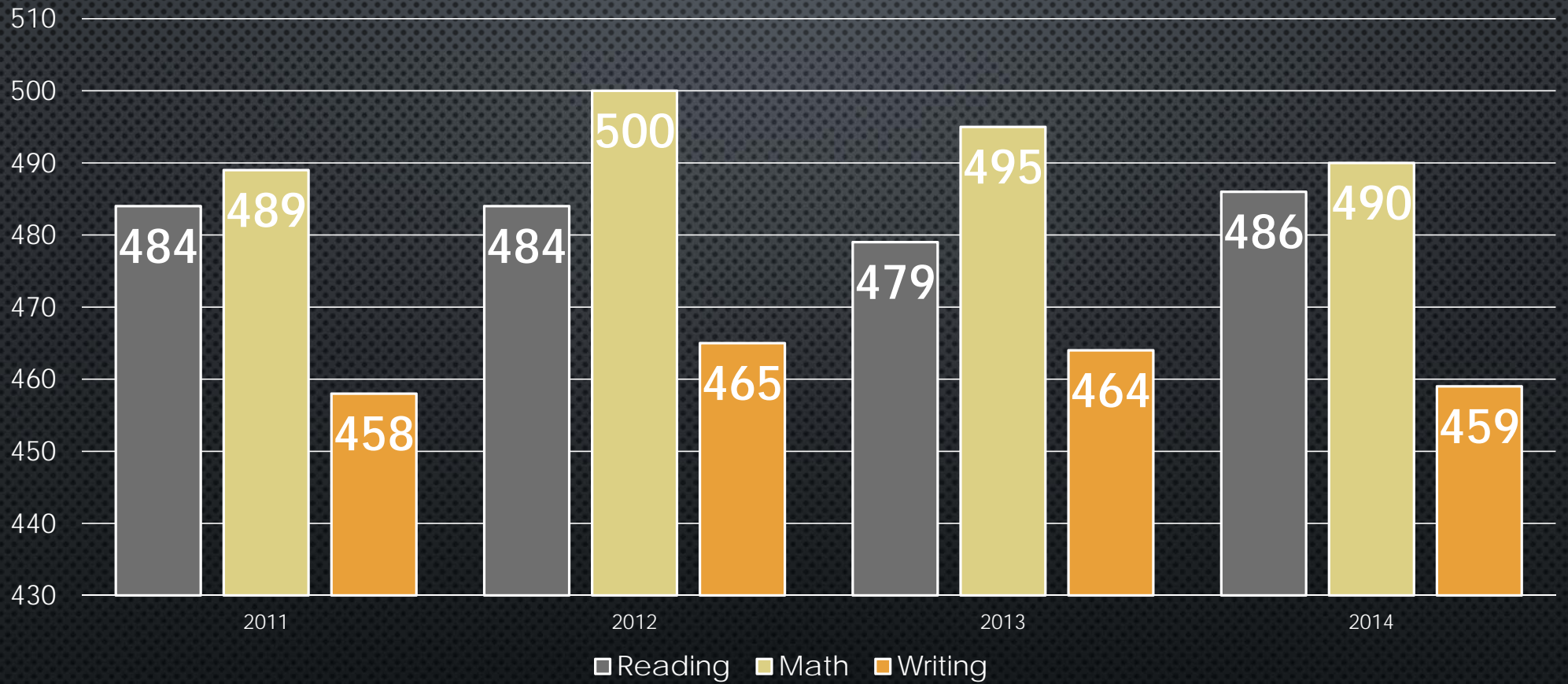


SAT PERFORMANCE

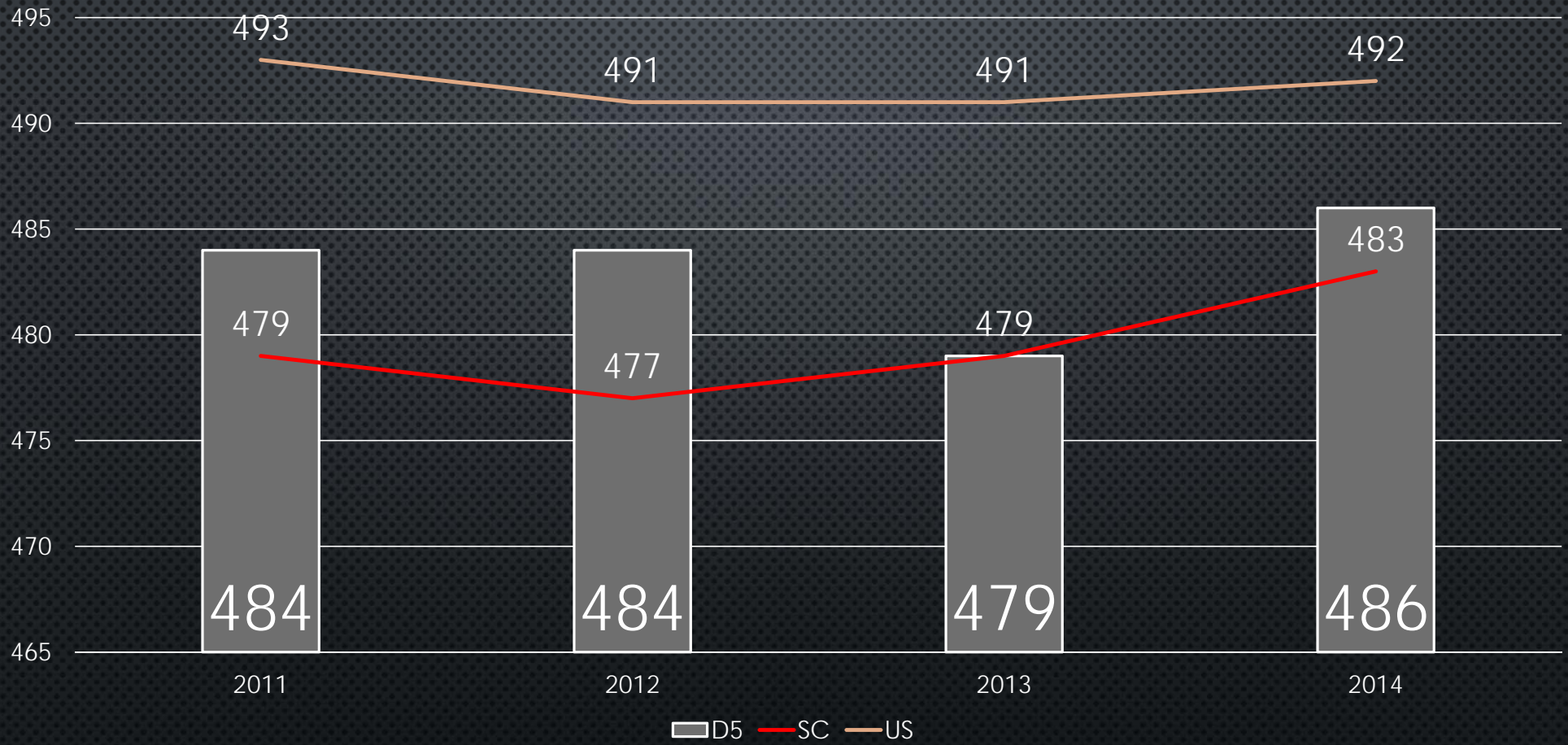
- 2014 SAW INCREASE IN CRITICAL READING SCORE, MATH AND WRITING DIPPED SLIGHTLY
- BYRNES STUDENTS CONTINUE TO EQUAL OR SURPASS STUDENTS STATEWIDE
- CONTINUE TO RANK IN THE TOP THIRD OF AREA SCHOOLS

SAT

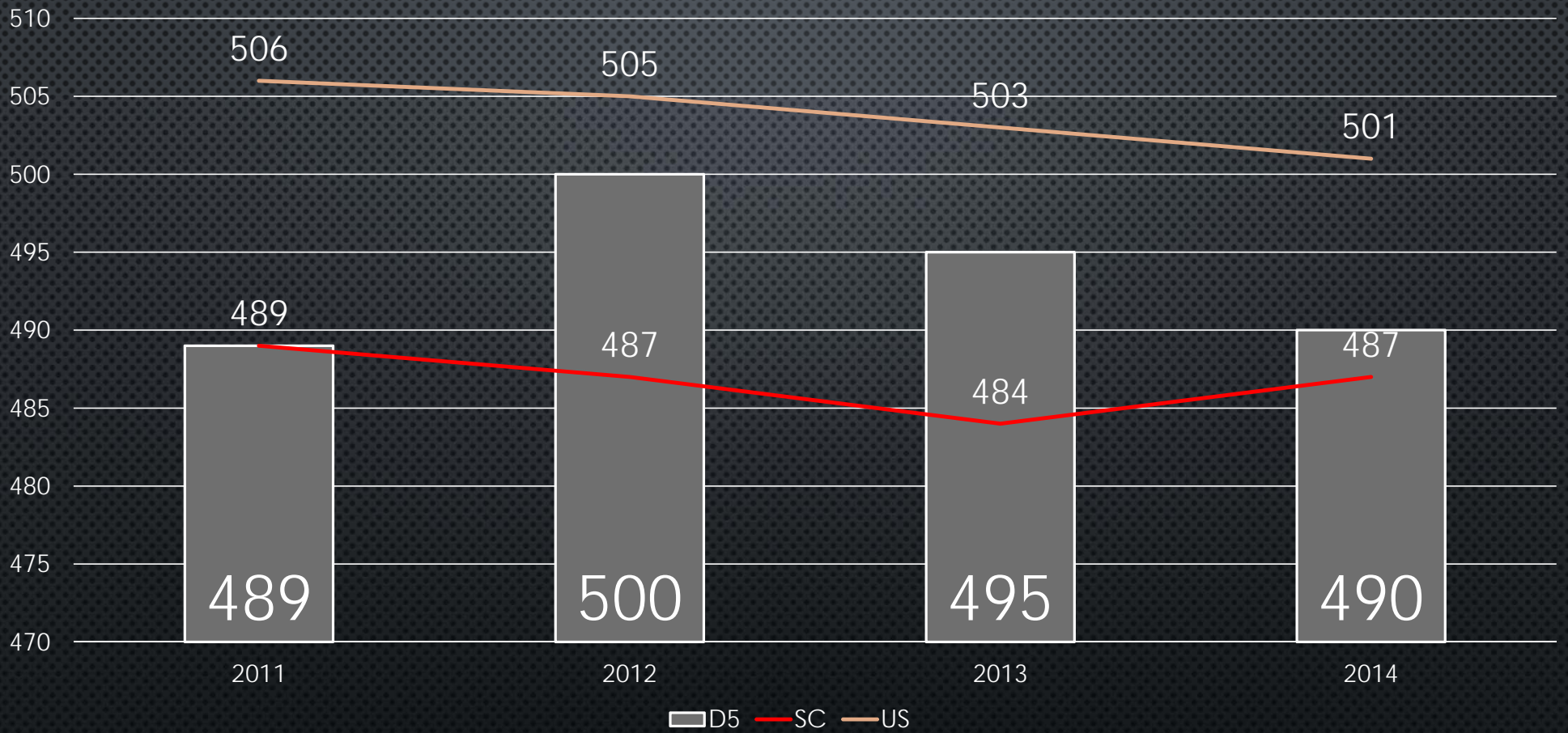
Subscore Trends: 2011-2014



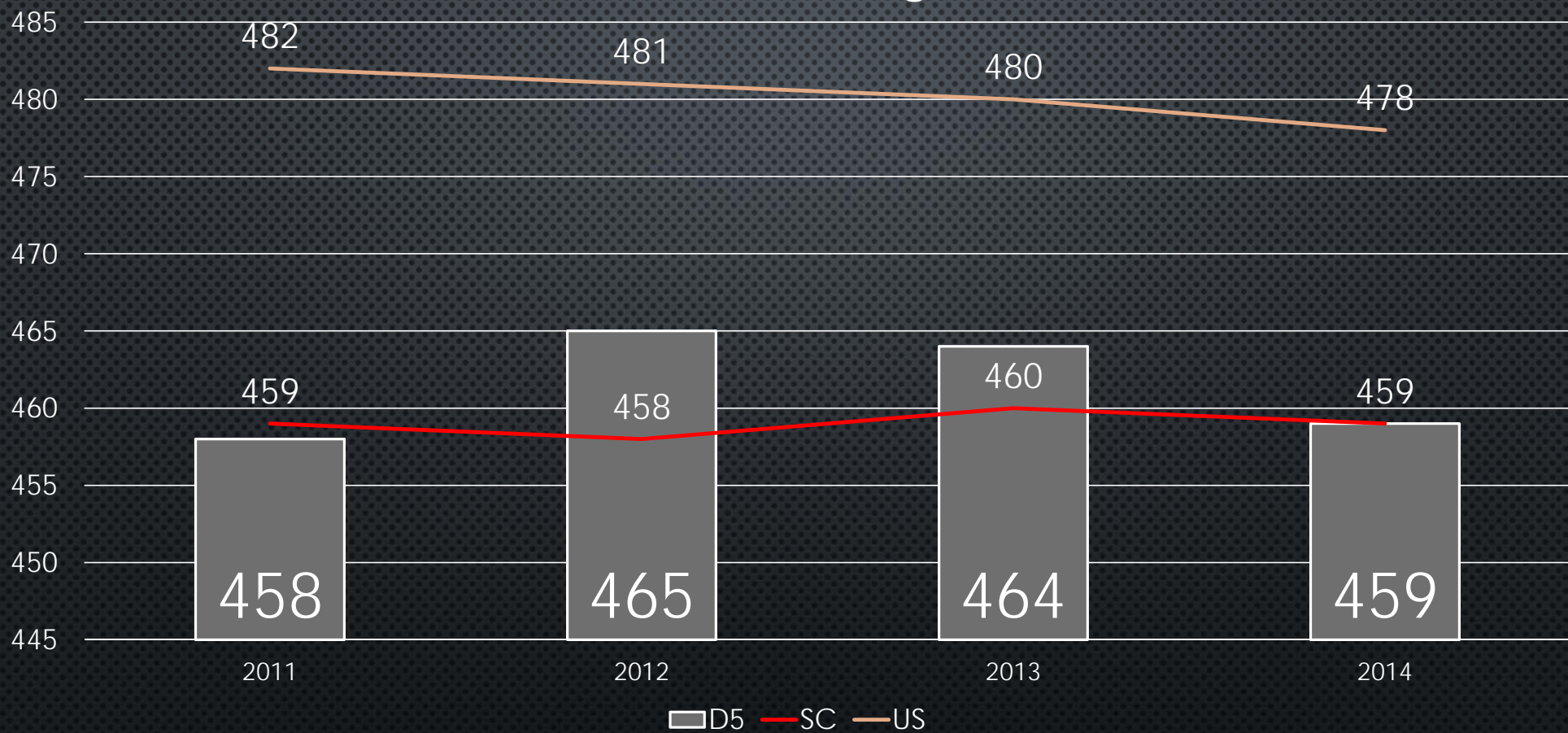
SAT - Critical Reading



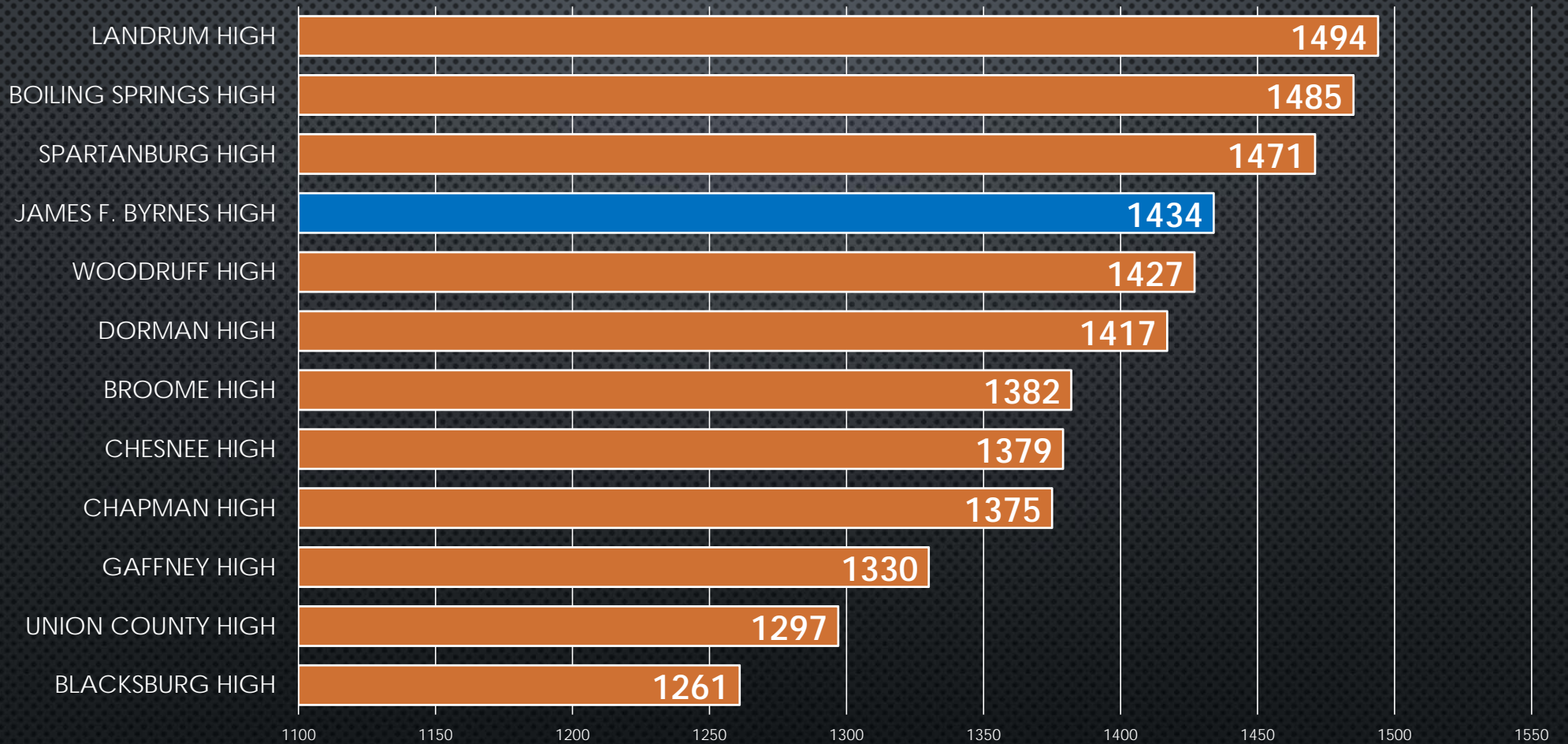
SAT - Math



SAT - Writing



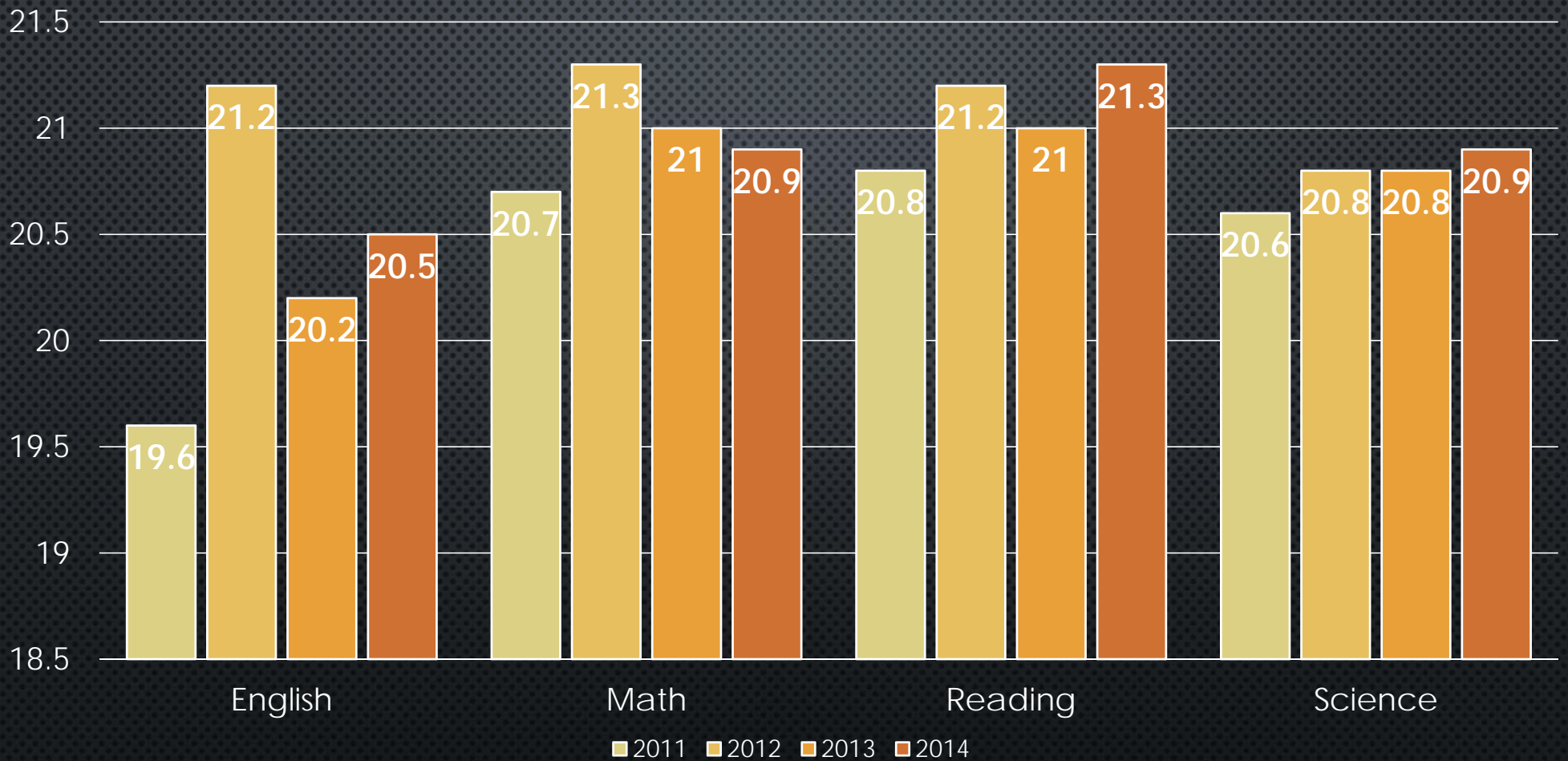
SAT - Composite Scores 2014



ACT PERFORMANCE

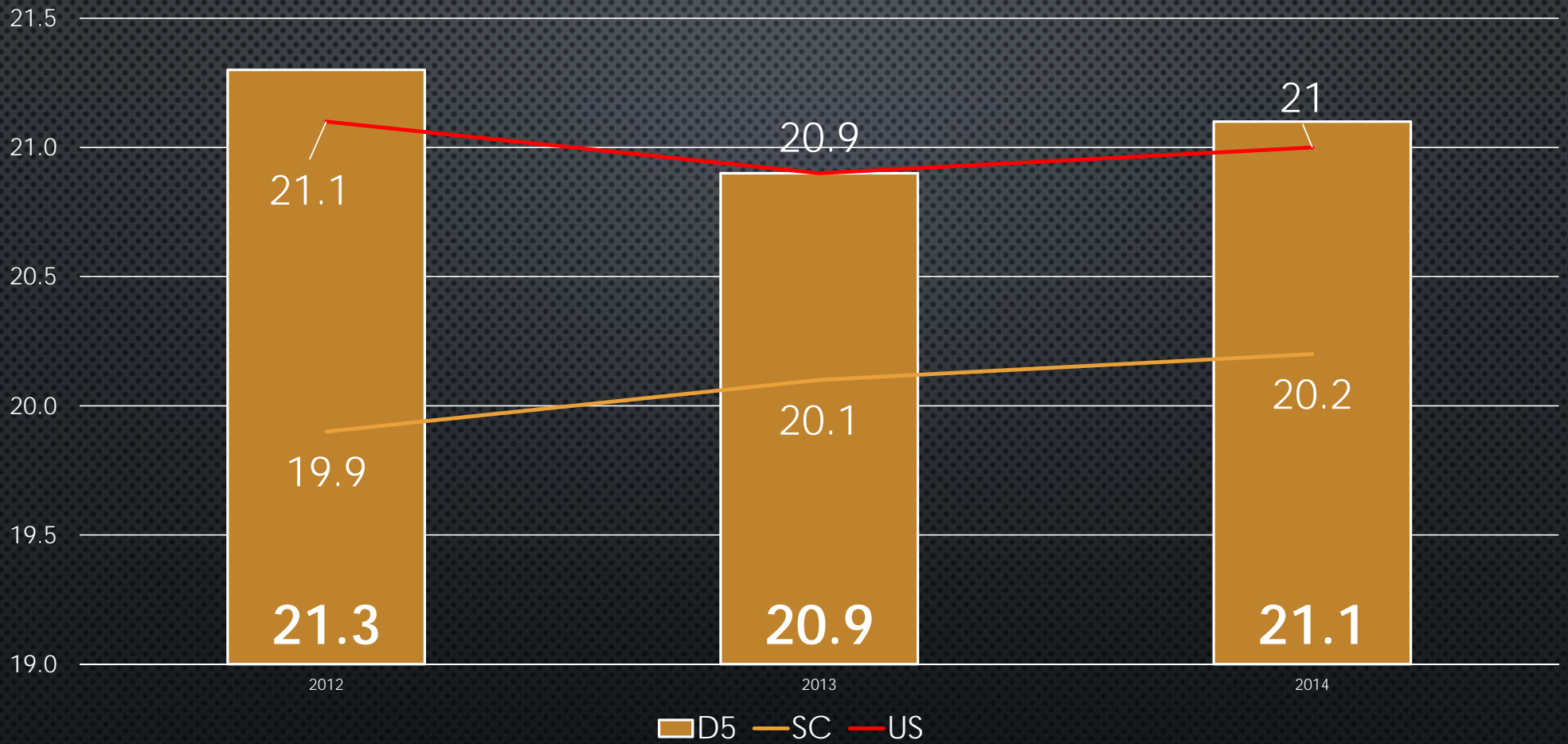
- 2014 SAW INCREASE IN COMPOSITE SCORE
- INCREASES IN ENGLISH, READING AND SCIENCE
- BYRNES STUDENTS SURPASSED BOTH THE STATE AND NATIONAL AVERAGE IN 2014
- CONTINUE TO RANK IN THE TOP THIRD OF AREA SCHOOLS

ACT - Subscore Performance

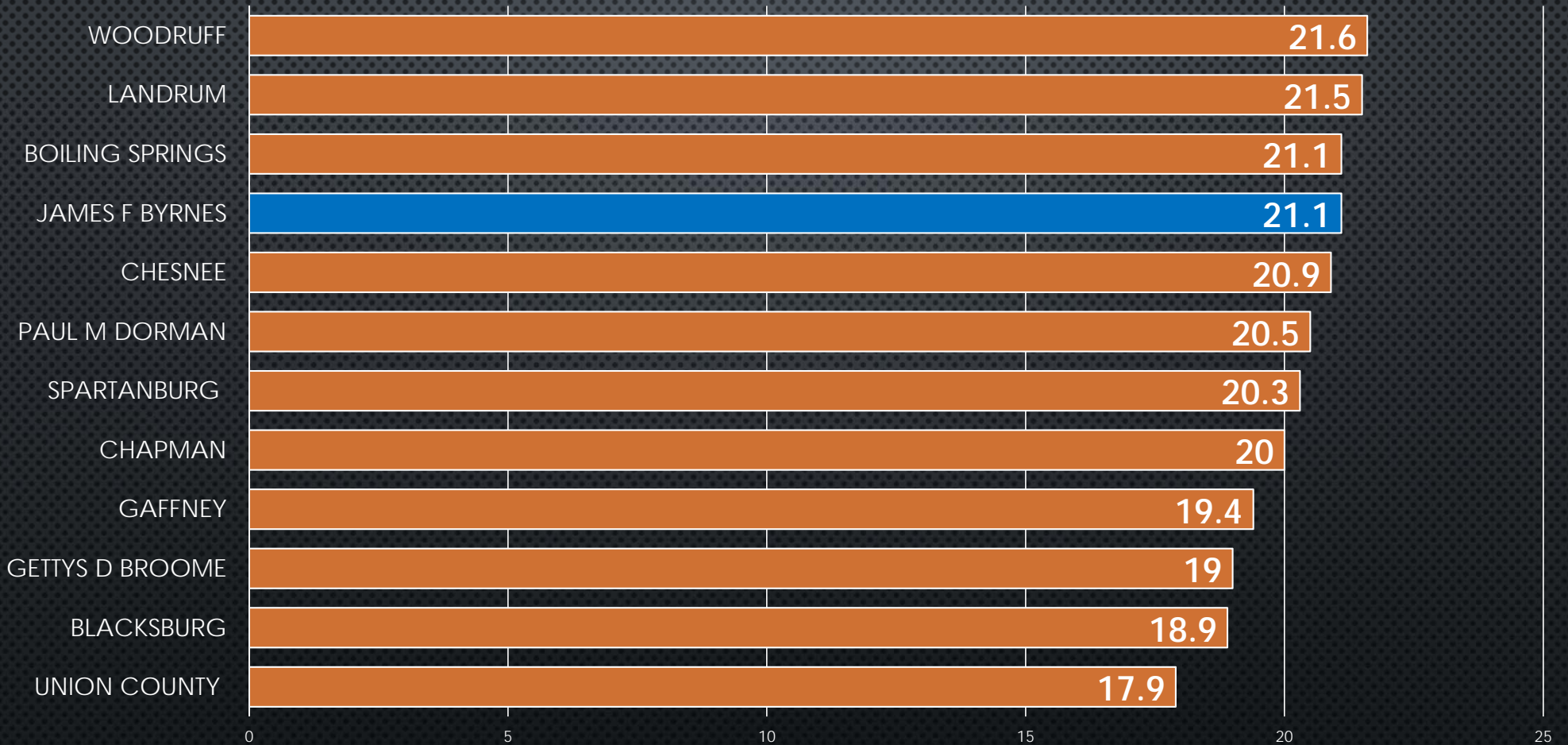


ACT

Average Composite Score Trend

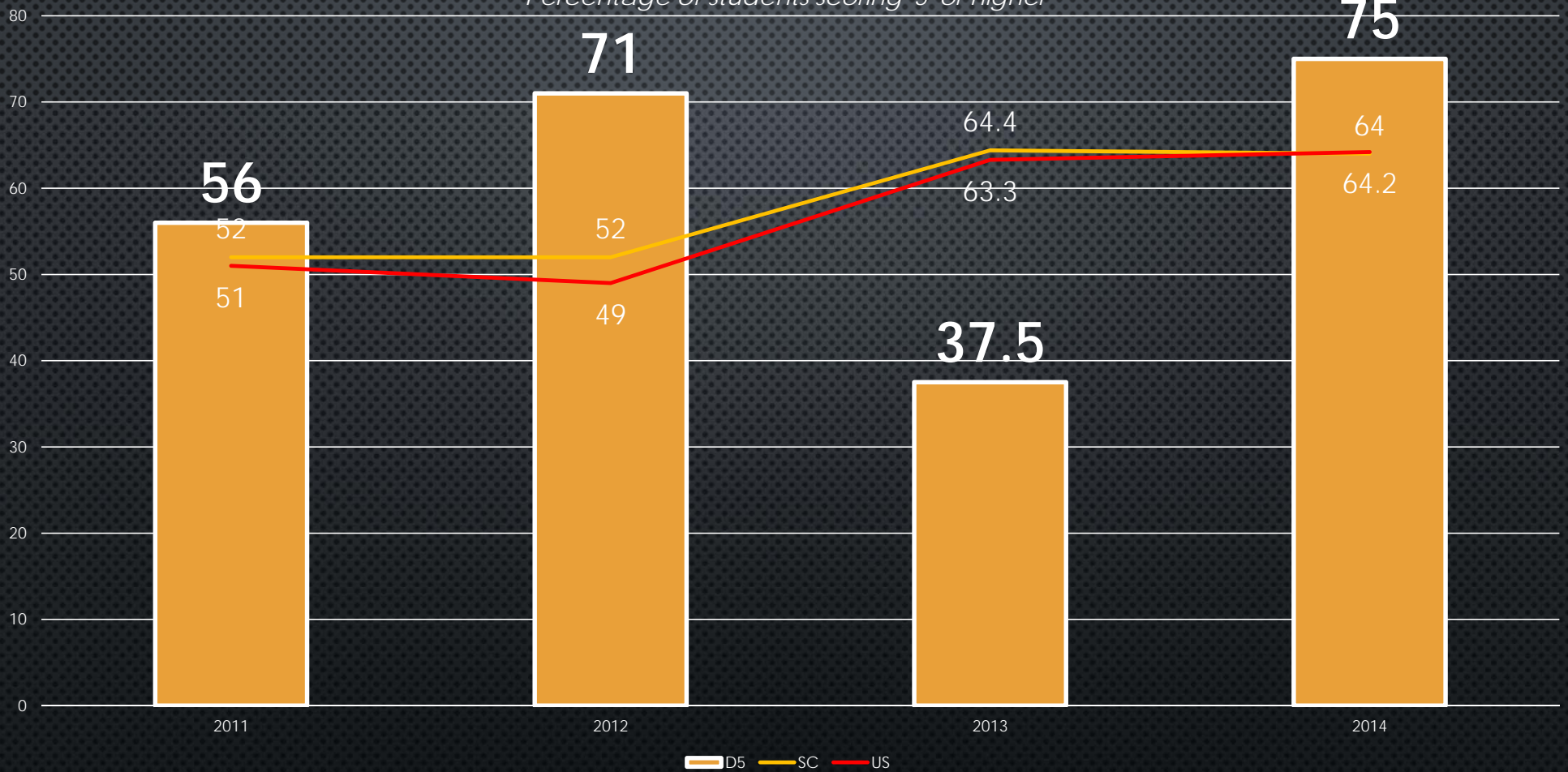


ACT Composite Scores - 2014



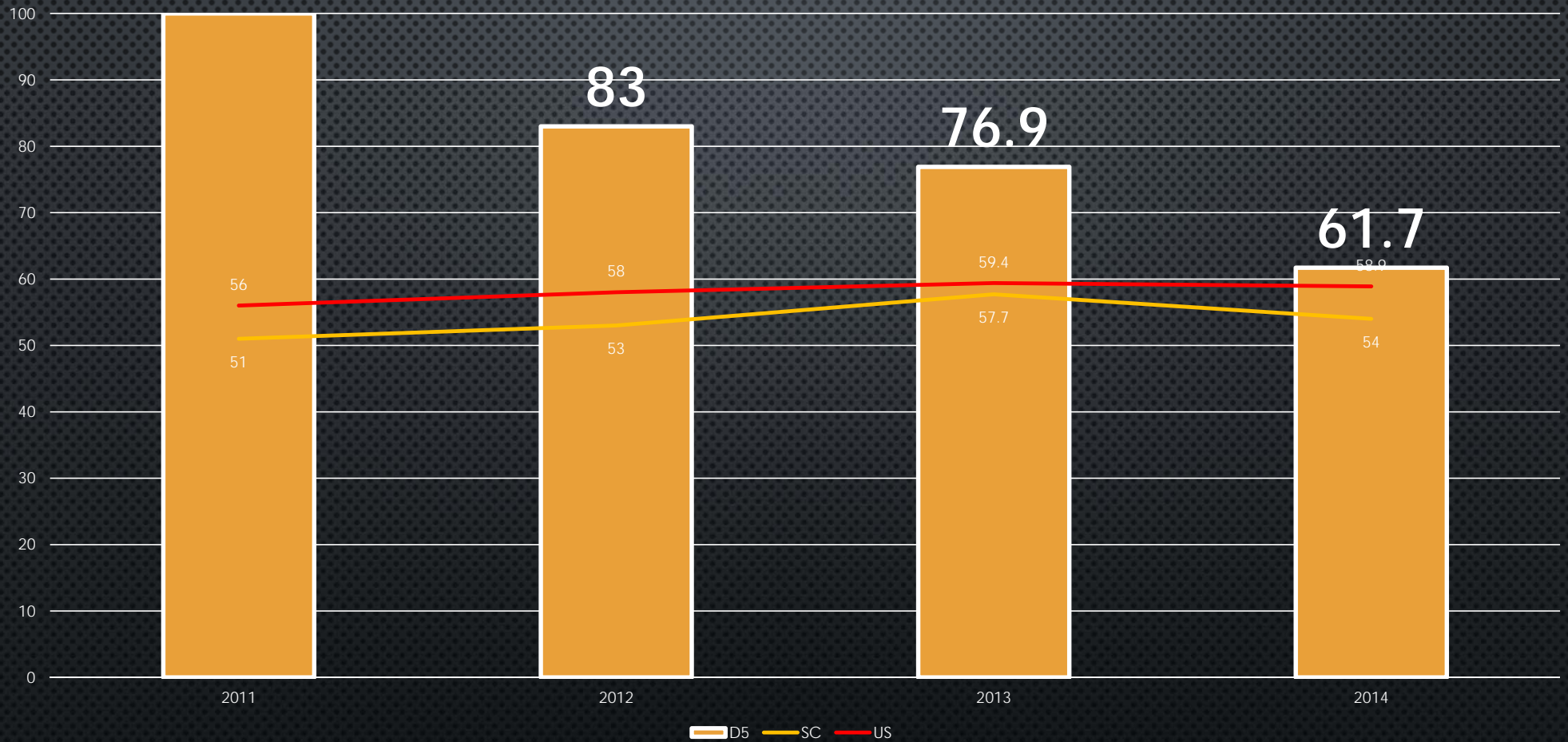
AP Biology

Percentage of students scoring '3' or higher



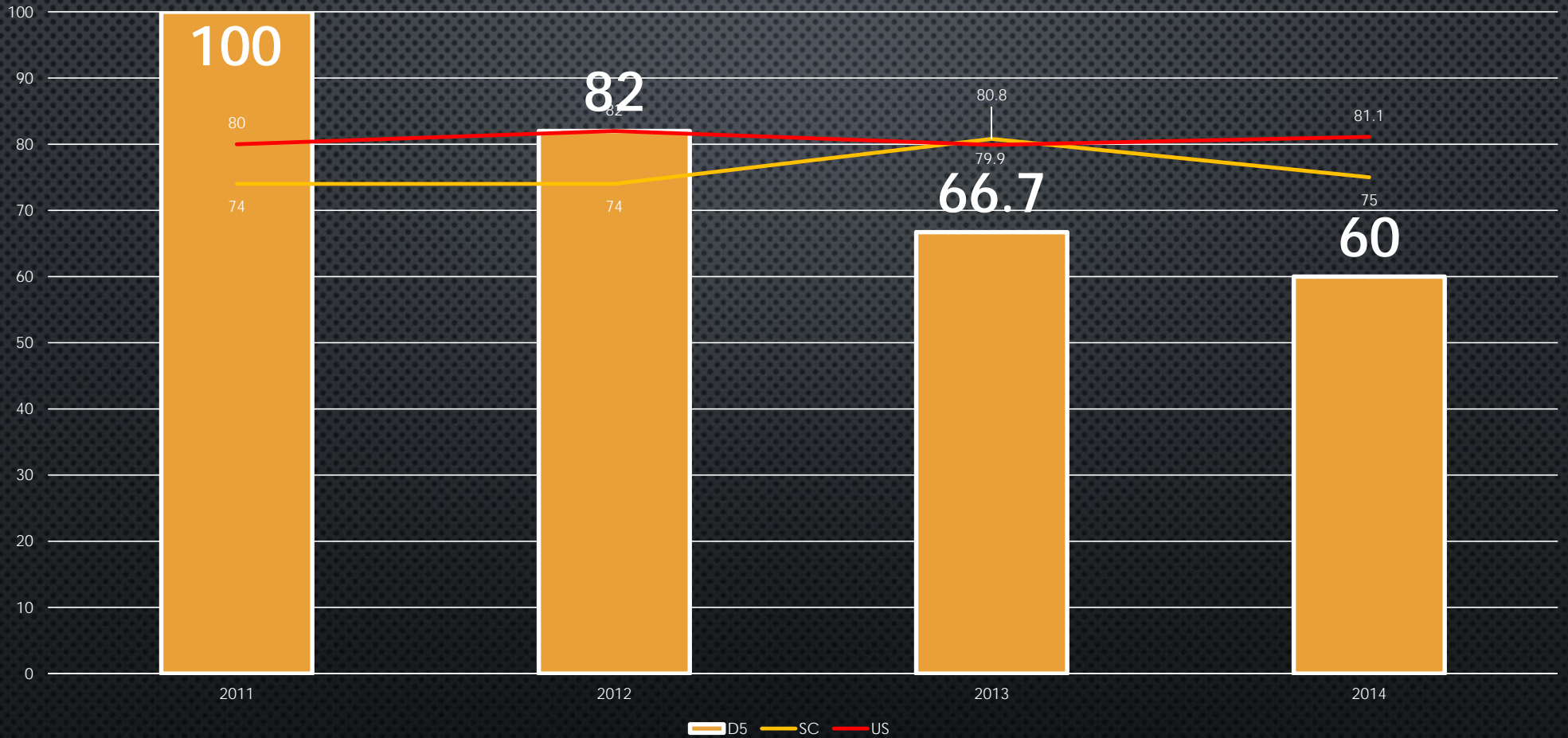
AP Calculus AB

Percentage of students scoring '3' or higher



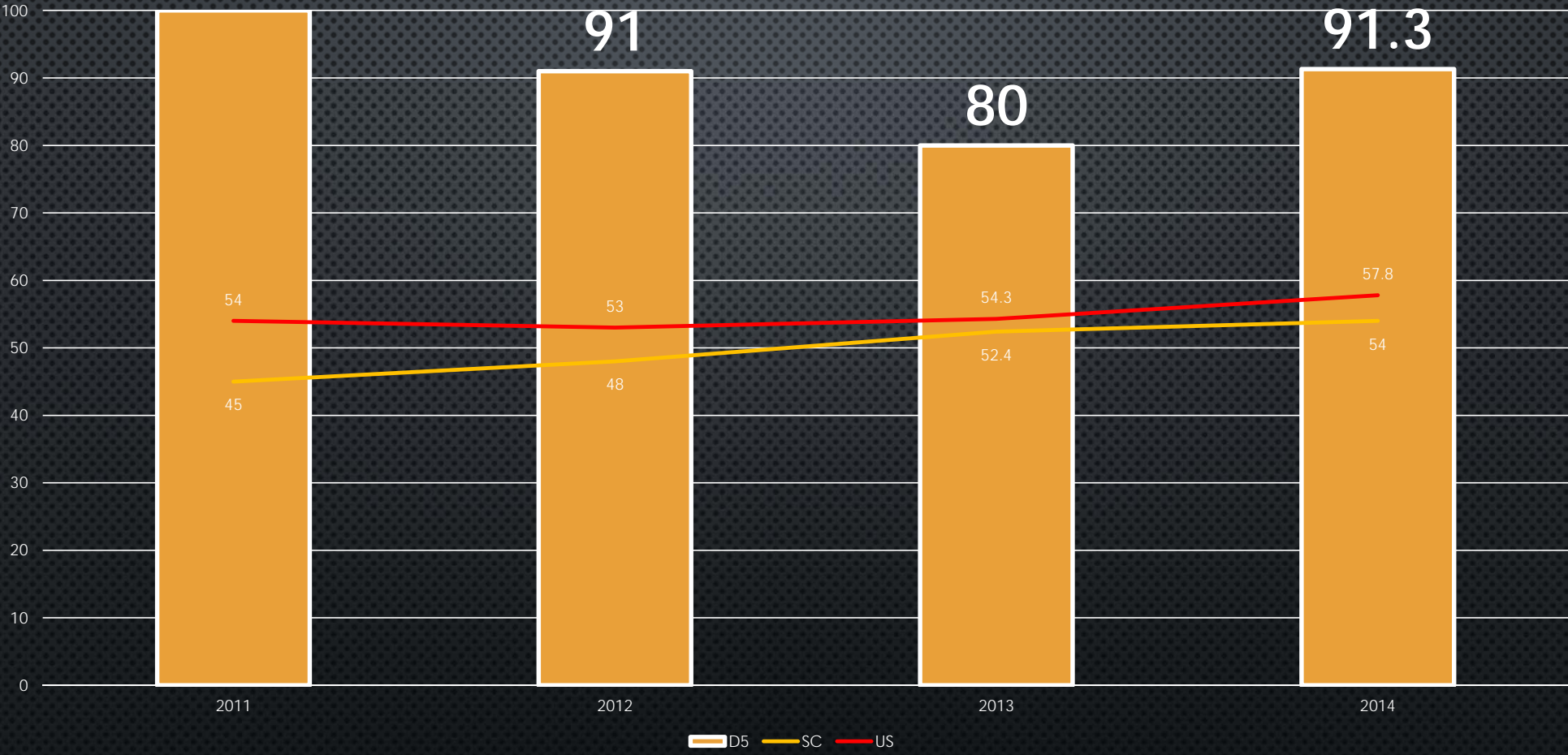
AP Calculus BC

Percentage of students scoring '3' or higher



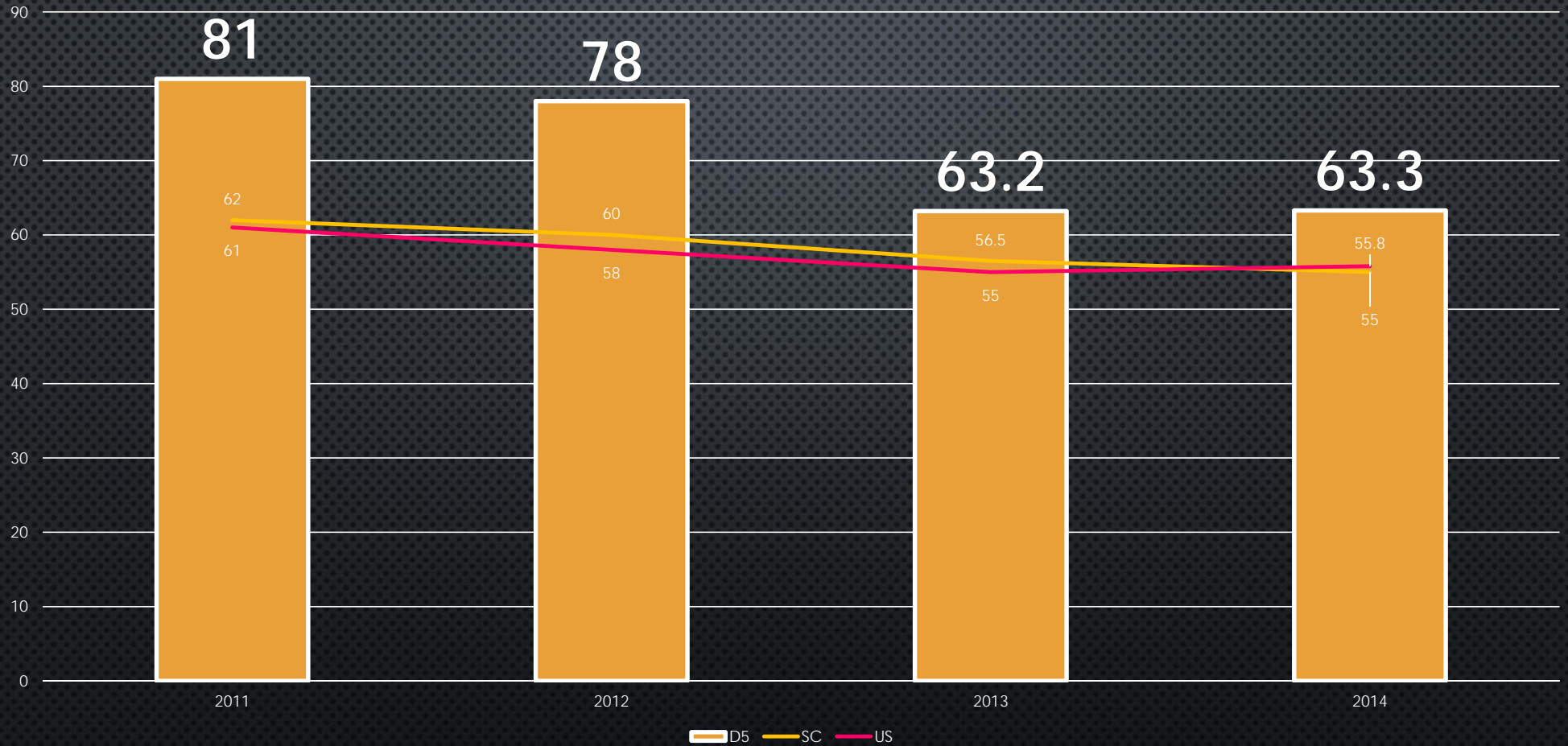
AP Macroeconomics

Percentage of students scoring '3' or higher



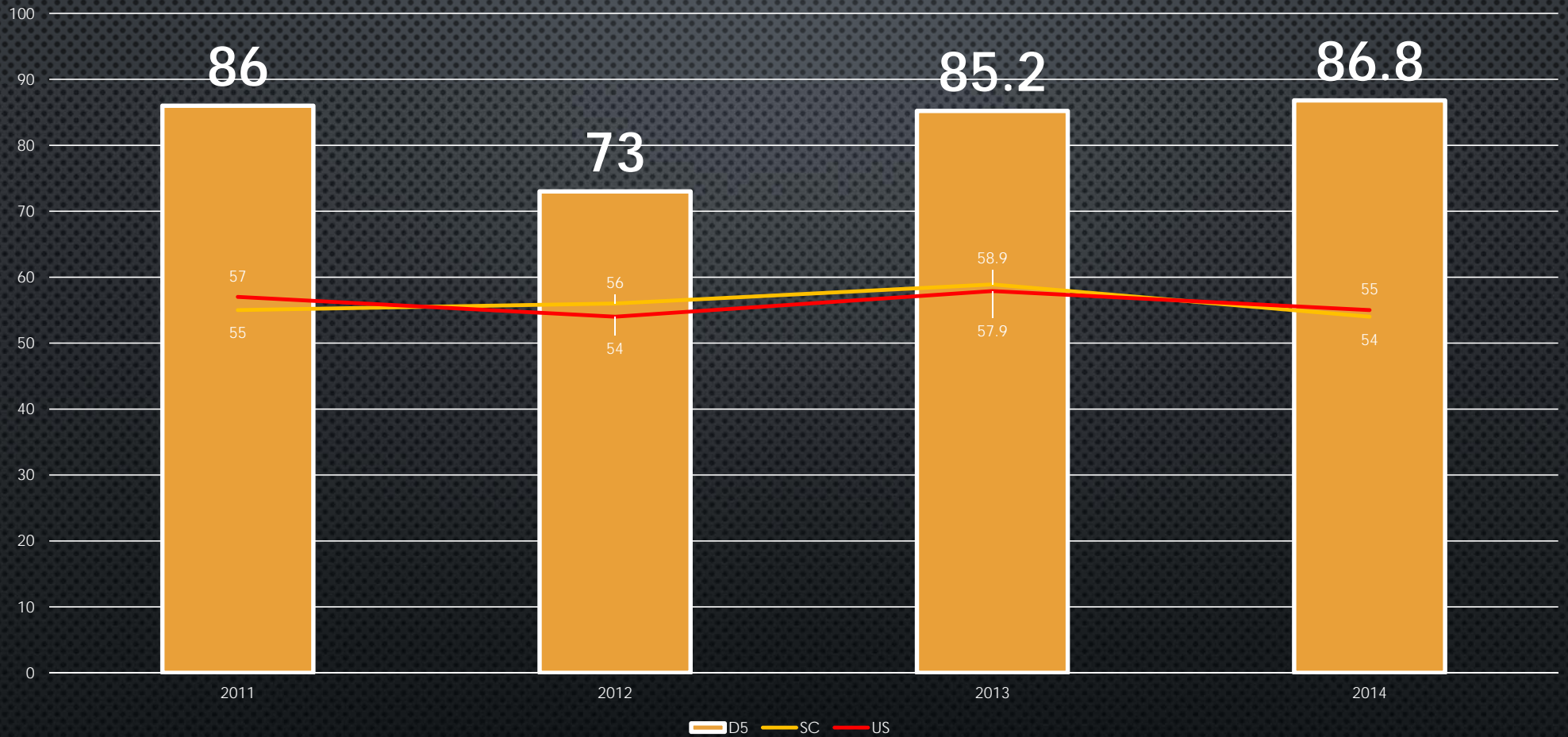
AP English Language

Percentage of students scoring '3' or higher



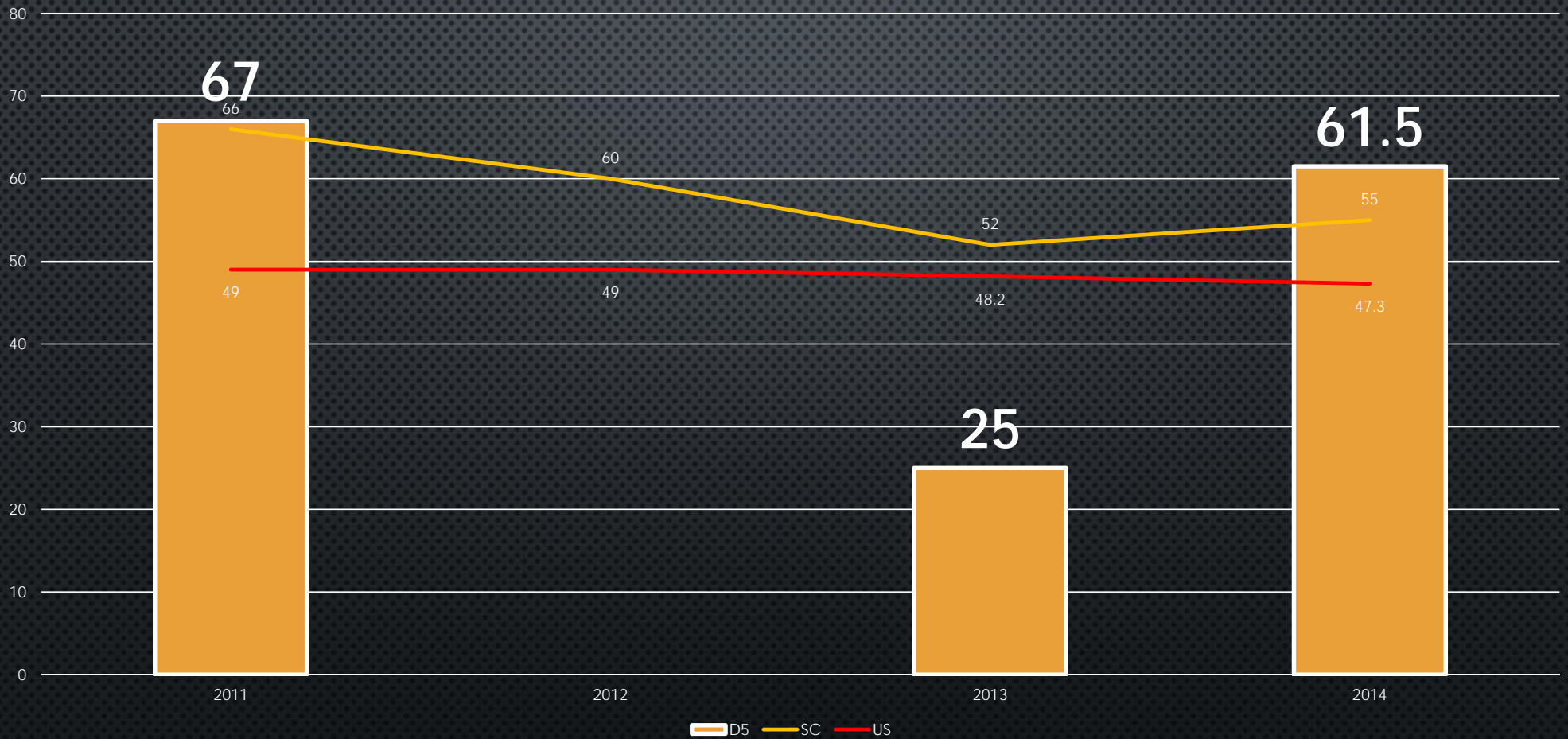
AP English Literature

Percentage of students scoring '3' or higher



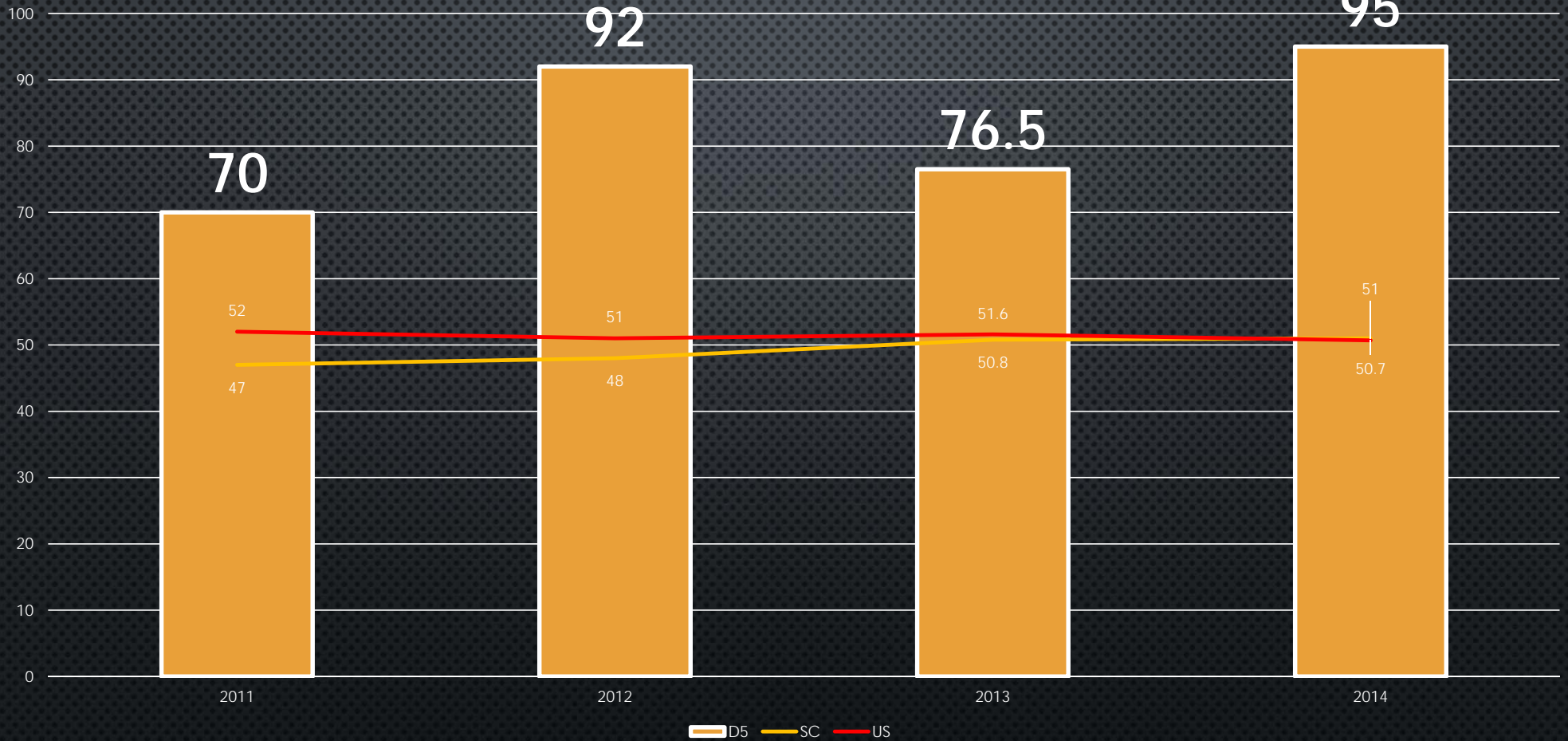
AP Environmental Science

Percentage of students scoring '3' or higher



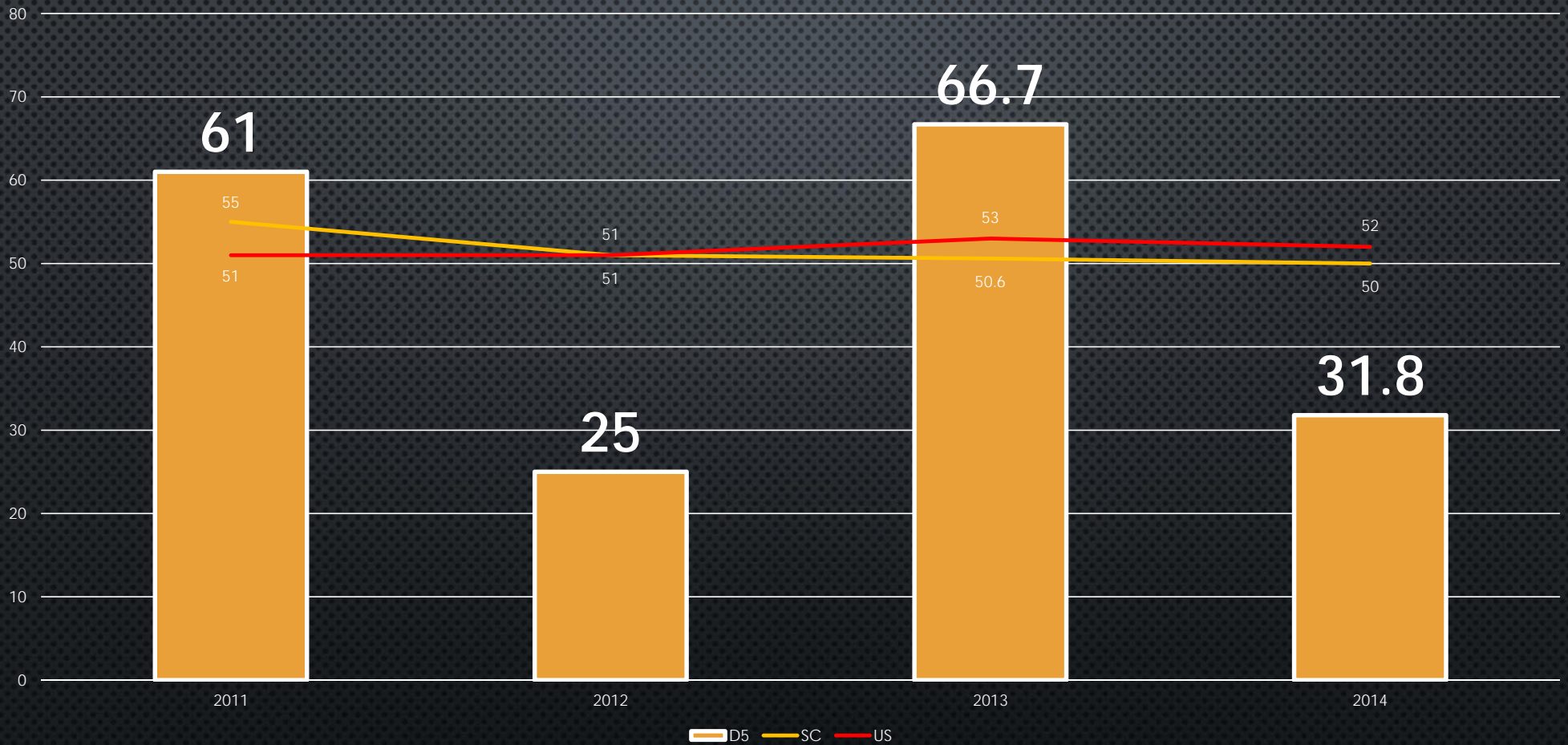
AP Government

Percentage of students scoring '3' or higher



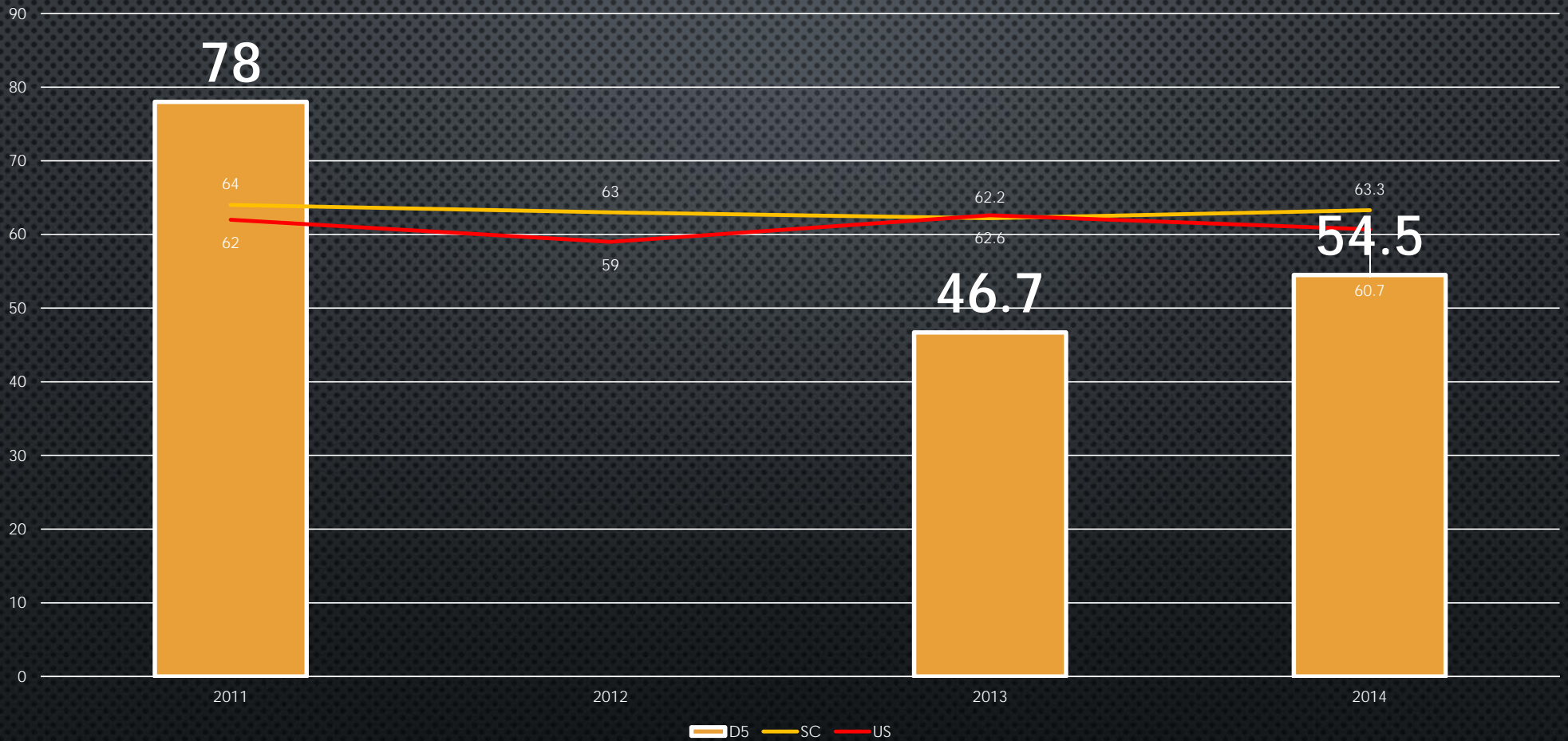
AP Human Geography

Percentage of students scoring '3' or higher



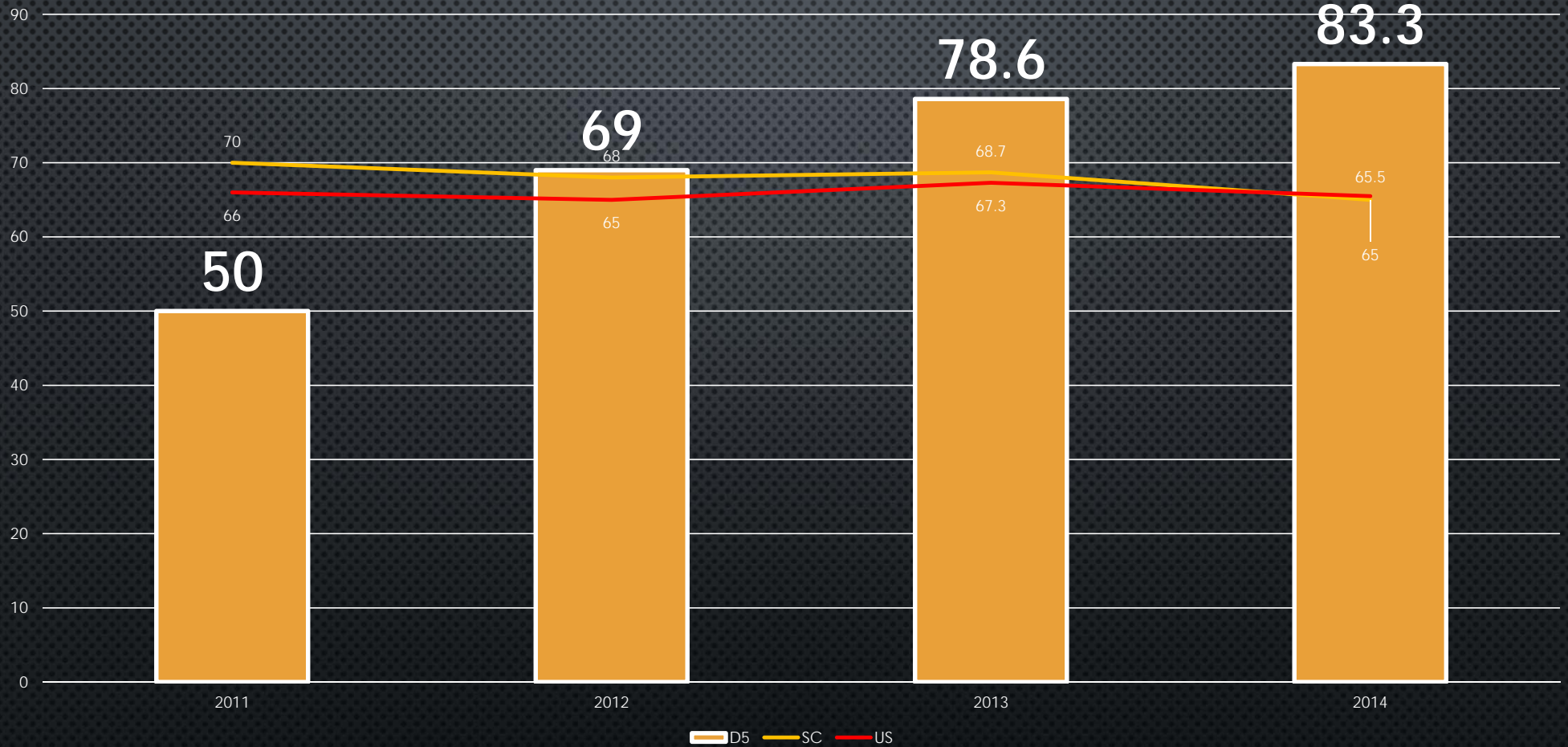
AP Physics

Percentage of students scoring '3' or higher



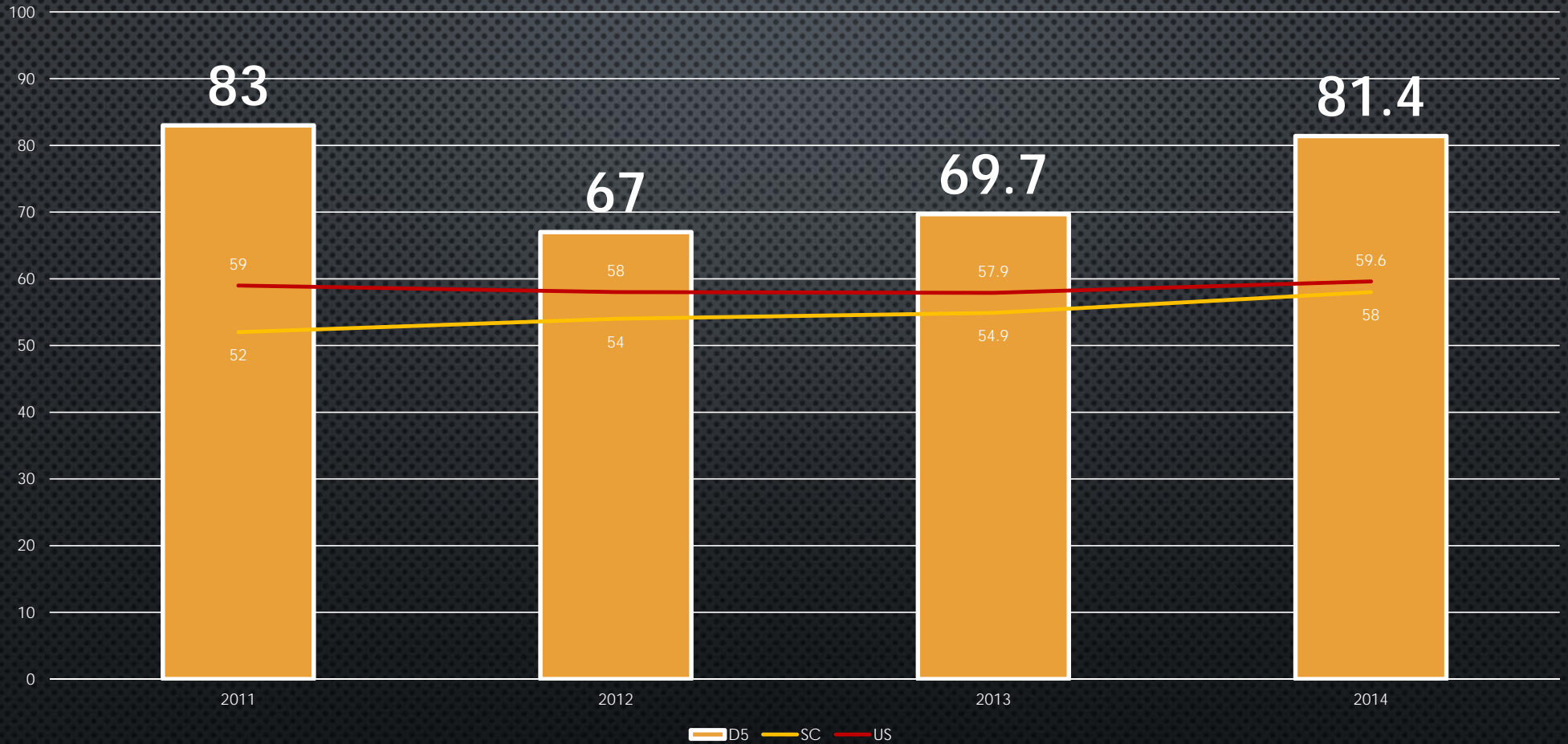
AP Psychology

Percentage of students scoring '3' or higher



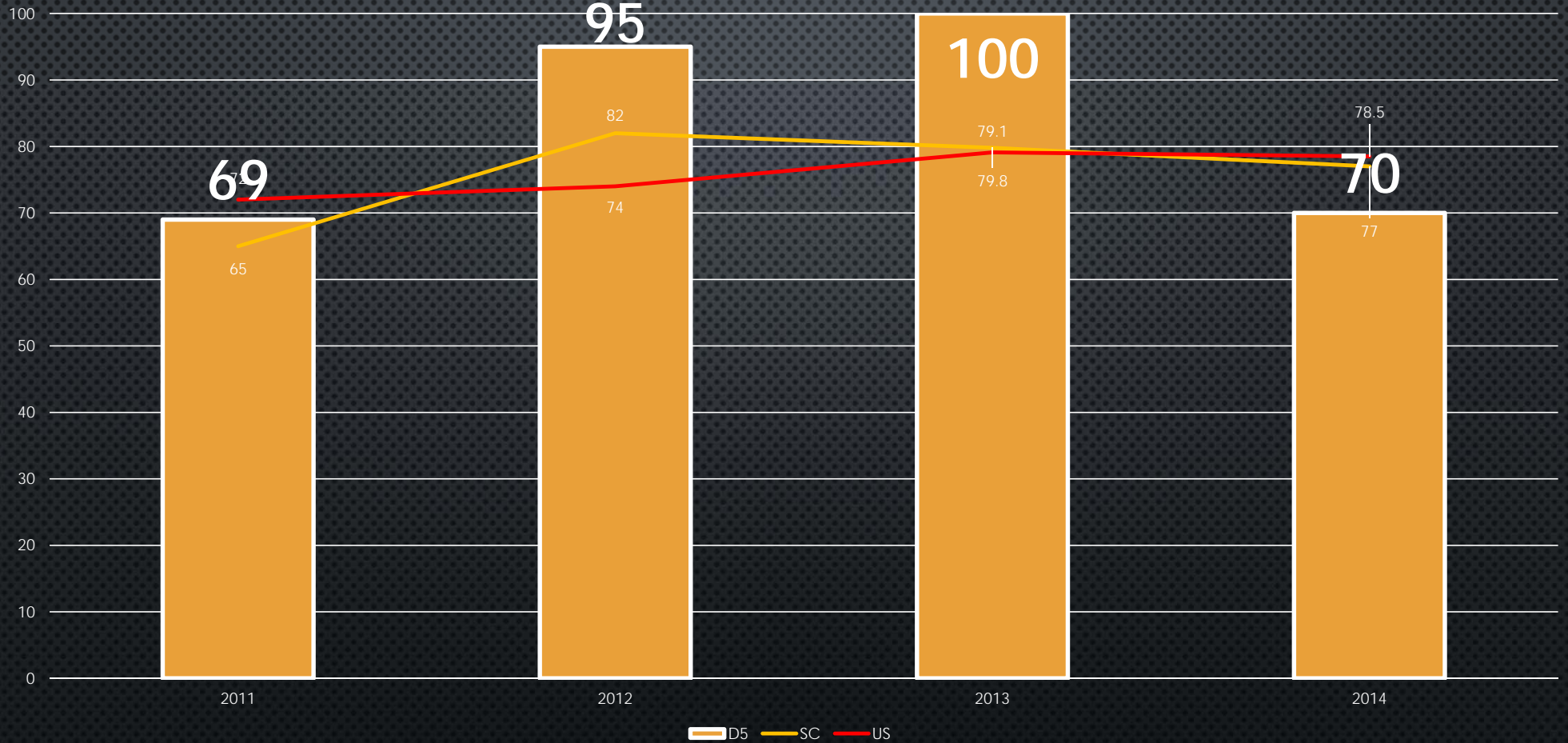
AP Statistics

Percentage of students scoring '3' or higher



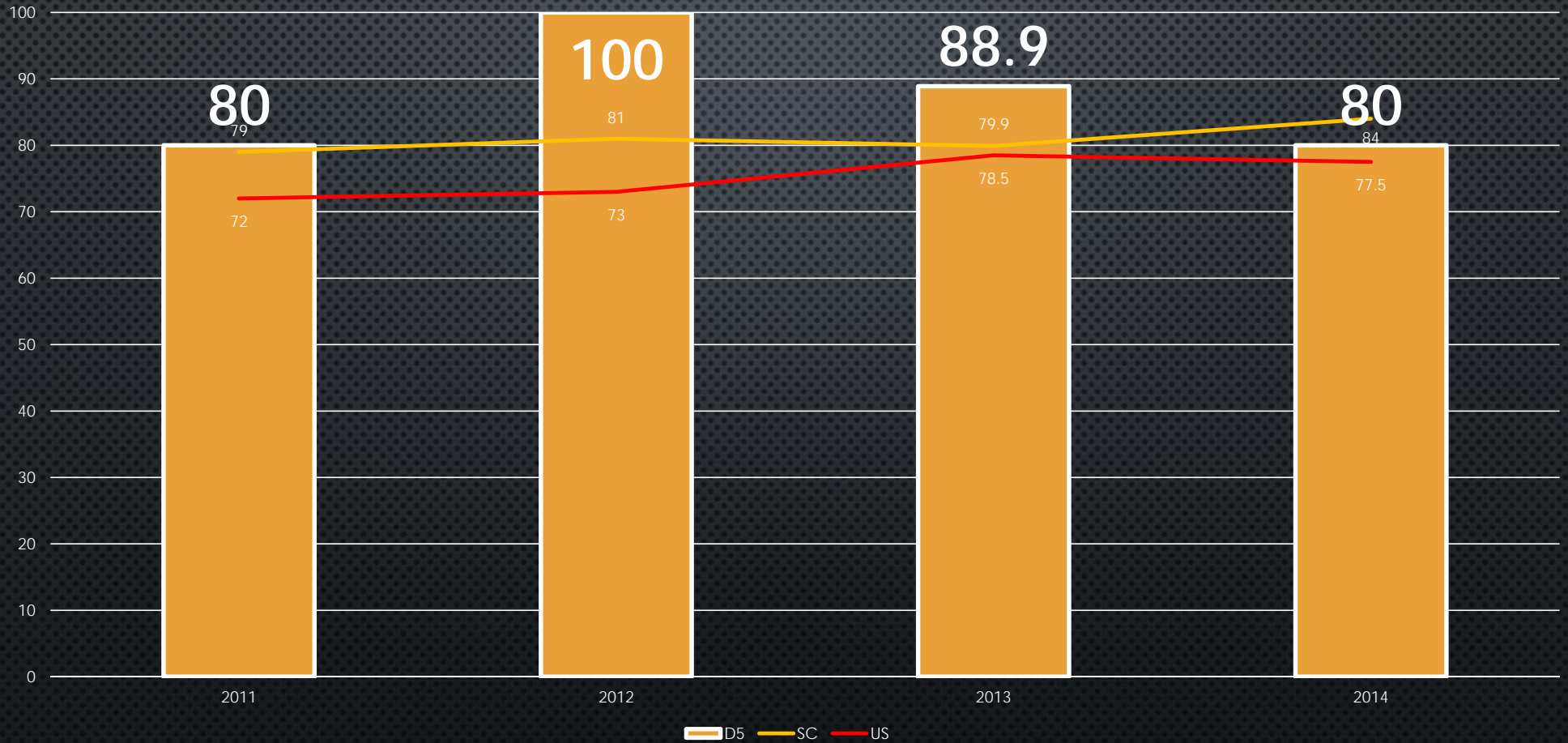
AP Art - 2D Design

Percentage of students scoring '3' or higher



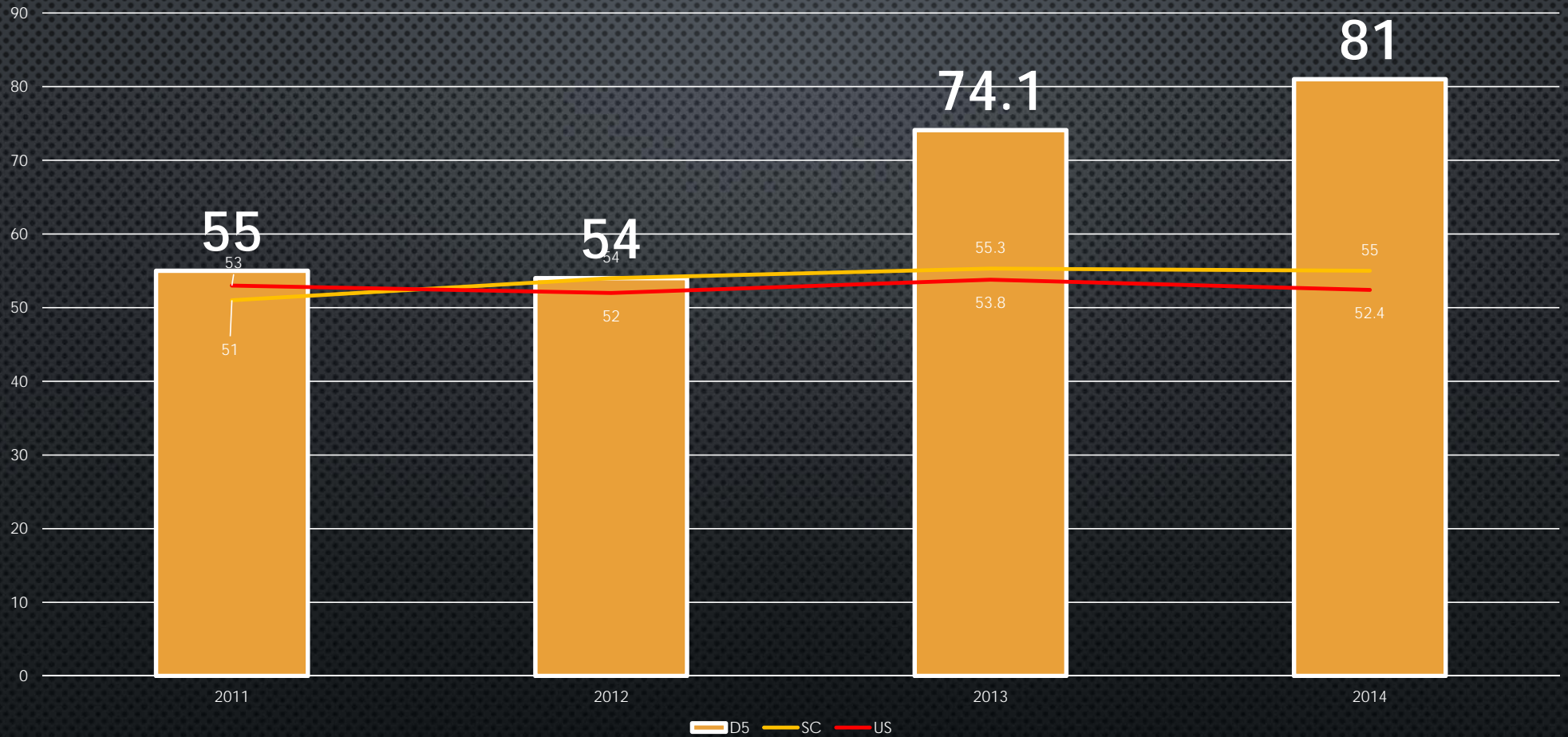
AP Studio Art - Drawing

Percentage of students scoring '3' or higher

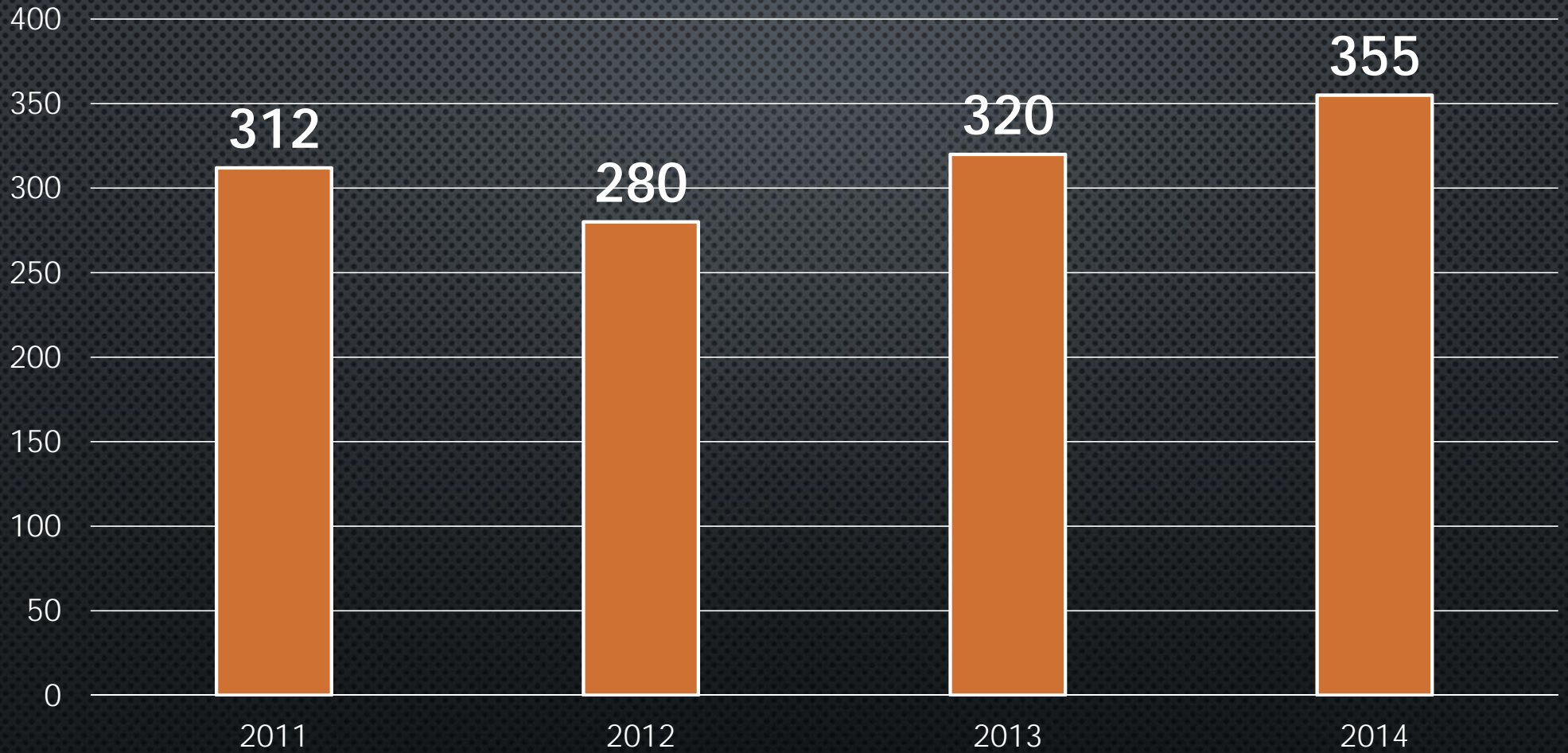


AP US History

Percentage of students scoring '3' or higher



AP Exams Administered - BHS



Advanced Placement (AP)

Percentage of students scoring '3' or higher - all tests

