

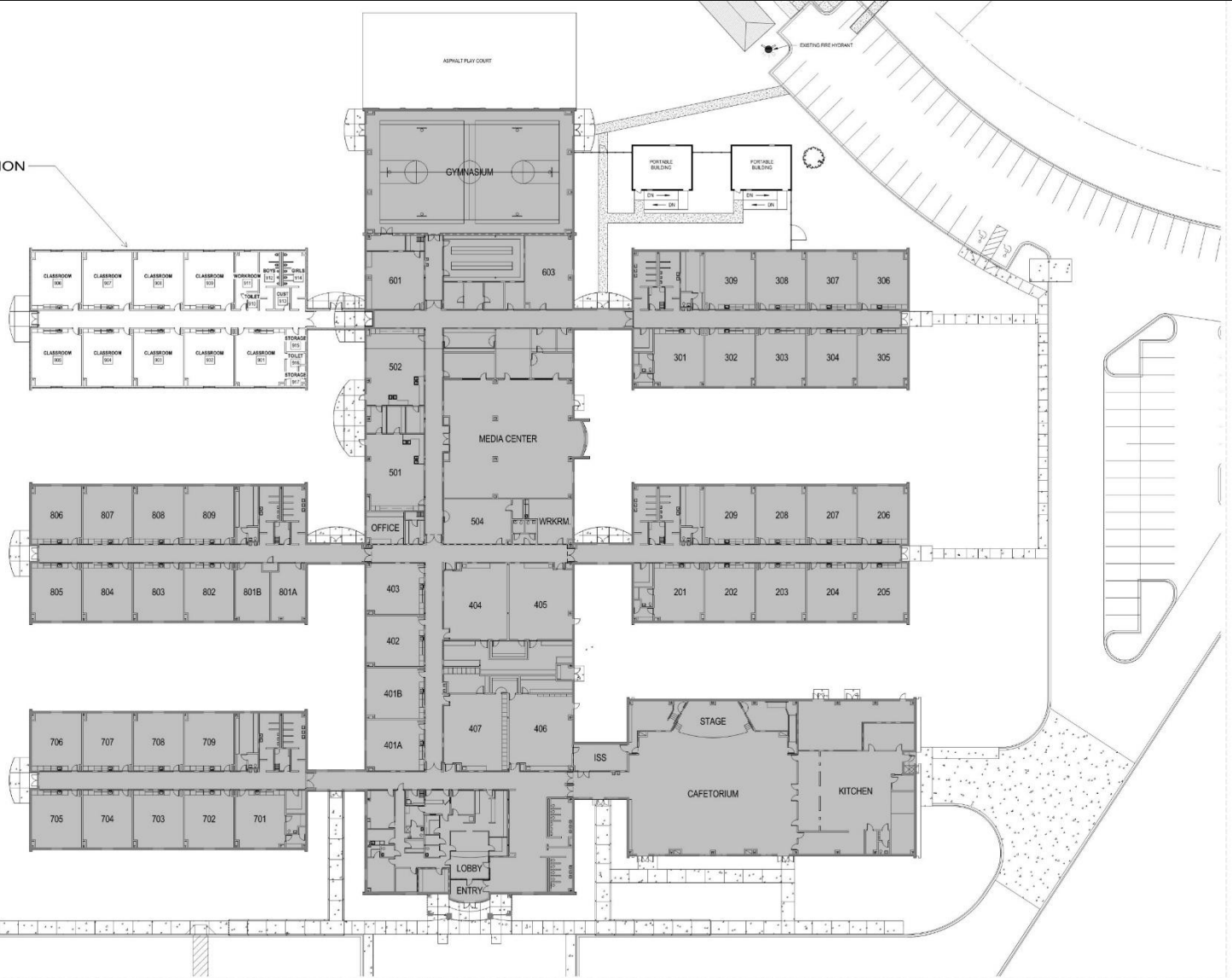
Beech Springs Intermediate School

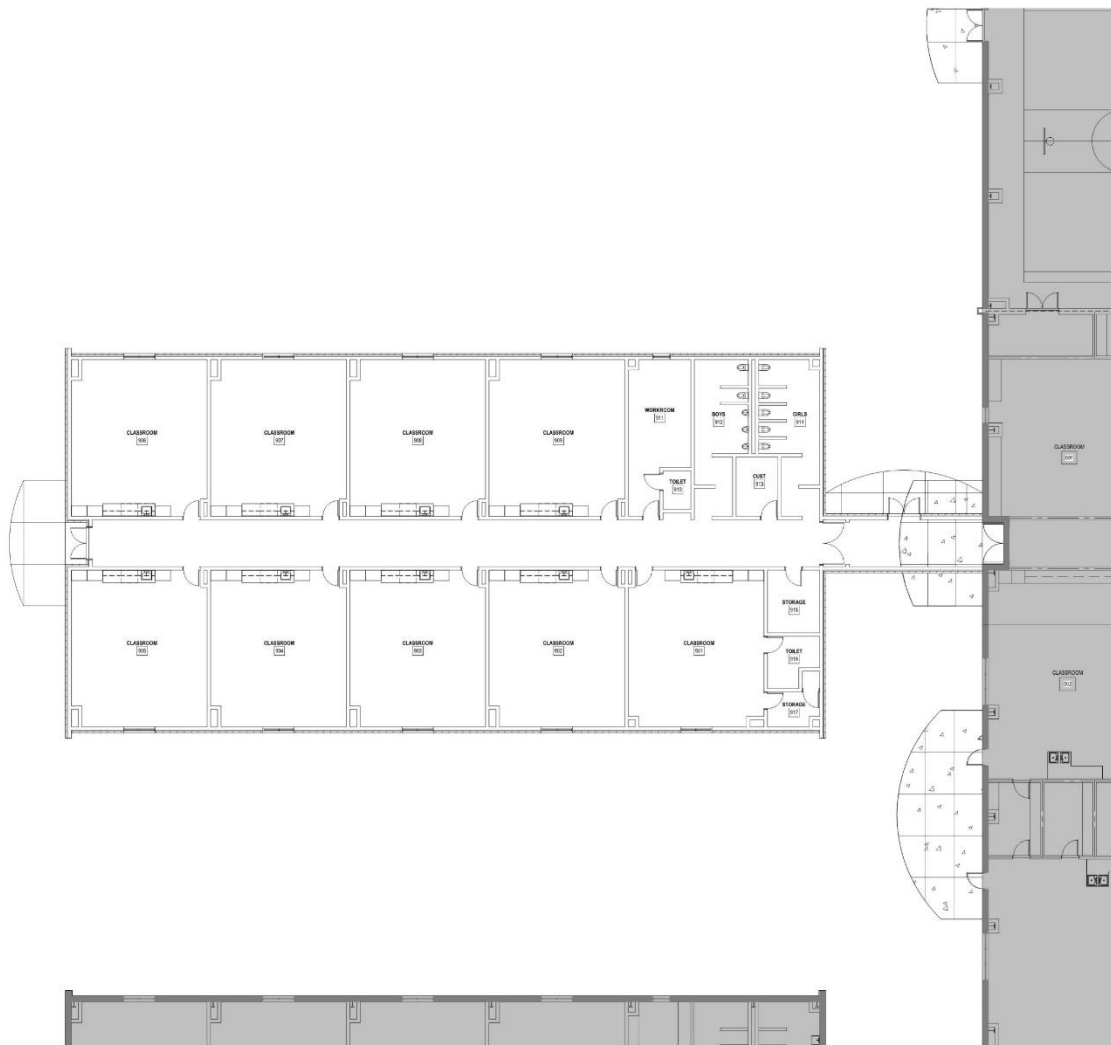
Classroom Addition

May 20, 2019



NEW CLASSROOM ADDITION





BEECH SPRINGS INTERMEDIATE SCHOOL ADDITION

PROJECT SPECIFICS:

• BUILDING SQUARE FOOTAGE:

- CURRENT AREA - 103,655 SF
- ADDITION AREA - 12,100 SF APPROXIMATELY
- TOTAL AREA - 115,755 SF APPROXIMATELY

• SCHOOL CAPACITY:

- CURRENT CAPACITY - APPROXIMATELY 772
- FUTURE CAPACITY - APPROXIMATELY 991

• PROJECT ESTIMATED COST:

- TOTAL PROJECT COSTS - \$3,780,000

• PROJECT TIMELINE:

- DESIGN PHASE - 8 MONTHS
- CONSTRUCTION PHASE - 14 MONTHS
- TOTAL DURATION - 22 MONTHS

*TENTATIVE CONSTRUCTION START SPRING 2020

*TENTATIVE OPENING OF AUGUST 2021